

# U.S. Drought Monitor

# Arkansas-White-Red Watershed

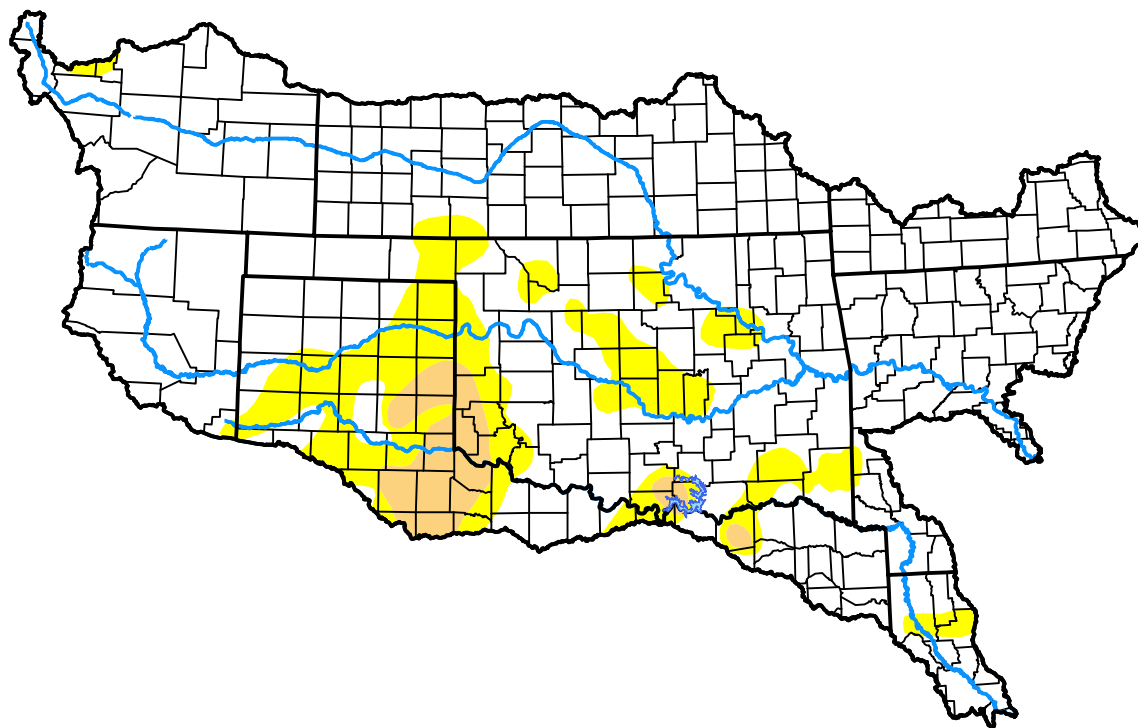
June 20, 2017

(Released Thursday, Jun. 22, 2017)

Valid 8 a.m. EDT

### Drought Conditions (Percent Area)

	None	D0-D4	D1-D4	D2-D4	D3-D4	D4
<b>Current</b>	82.48	17.52	3.72	0.00	0.00	0.00
<b>Last Week</b> <i>06-15-2017</i>	84.25	15.75	1.86	0.00	0.00	0.00
<b>3 Months Ago</b> <i>03-23-2017</i>	7.29	92.71	61.25	21.62	1.60	0.00
<b>Start of Calendar Year</b> <i>01-05-2017</i>	12.70	87.30	53.65	24.54	2.04	0.00
<b>Start of Water Year</b> <i>09-29-2016</i>	79.48	20.52	5.84	0.86	0.00	0.00
<b>One Year Ago</b> <i>06-23-2016</i>	91.06	8.94	0.00	0.00	0.00	0.00



### Intensity:



The Drought Monitor focuses on broad-scale conditions. Local conditions may vary. For more information on the Drought Monitor, go to <https://droughtmonitor.unl.edu/About.aspx>

### Author:

David Miskus  
NOAA/NWS/NCEP/CPC



[droughtmonitor.unl.edu](https://droughtmonitor.unl.edu)