

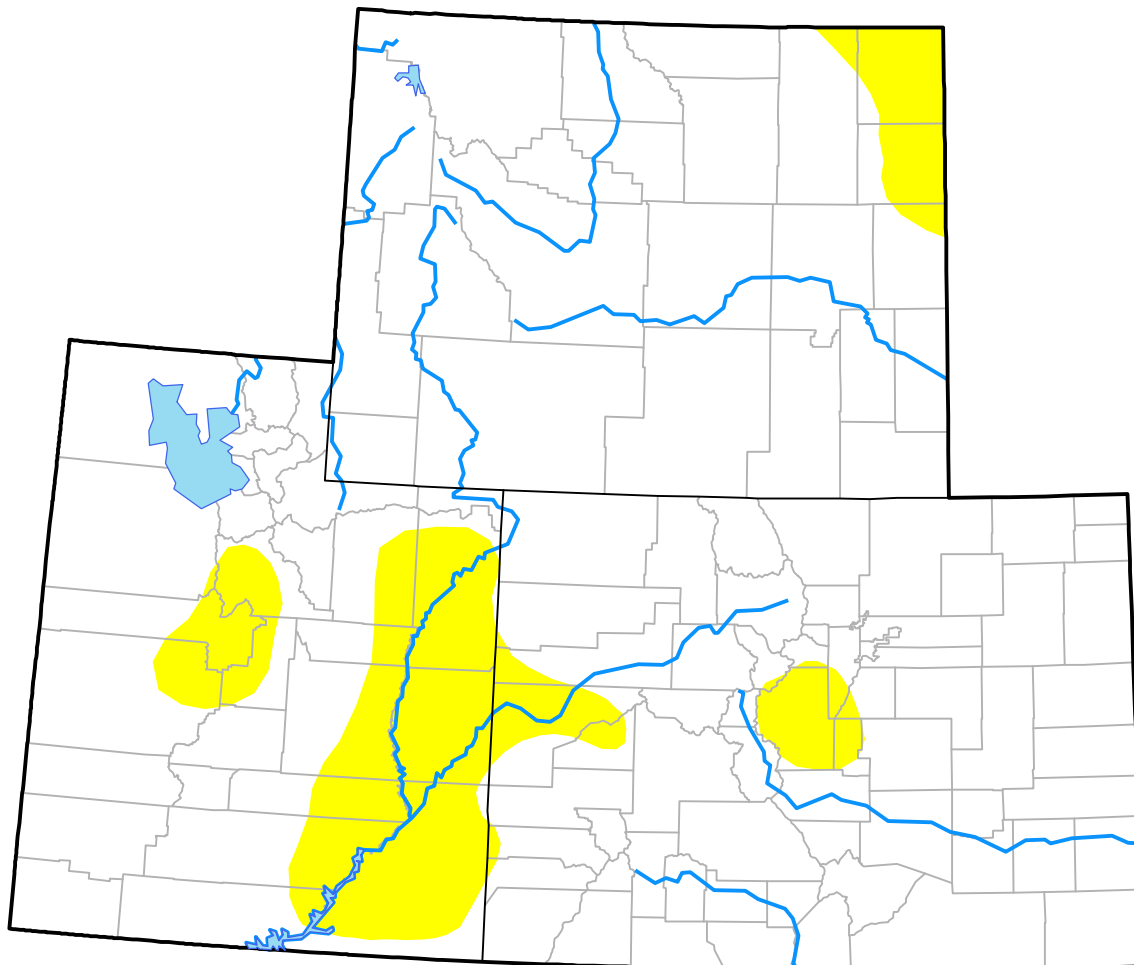
Upper Colorado River Basin RDEWS

(Released Thursday, Jun. 22, 2017)

Valid 8 a.m. EDT

Drought Conditions (Percent Area)

	None	D0	D1	D2	D3	D4
Current	87.21	12.79	0.00	0.00	0.00	0.00
Last Week <i>06-15-2017</i>	89.72	10.28	0.00	0.00	0.00	0.00
3 Months Ago <i>03-23-2017</i>	75.99	5.62	16.53	1.79	0.07	0.00
Start of Calendar Year <i>01-05-2017</i>	46.62	30.64	21.46	1.29	0.00	0.00
Start of Water Year <i>09-29-2016</i>	52.16	34.42	9.29	4.12	0.00	0.00
One Year Ago <i>06-23-2016</i>	74.25	22.04	2.62	1.09	0.00	0.00



Intensity:

- None
- D0 Abnormally Dry
- D1 Moderate Drought
- D2 Severe Drought
- D3 Extreme Drought
- D4 Exceptional Drought

The Drought Monitor focuses on broad-scale conditions. Local conditions may vary. For more information on the Drought Monitor, go to <https://droughtmonitor.unl.edu/About.aspx>

Author:

David Miskus
NOAA/NWS/NCEP/CPC

