

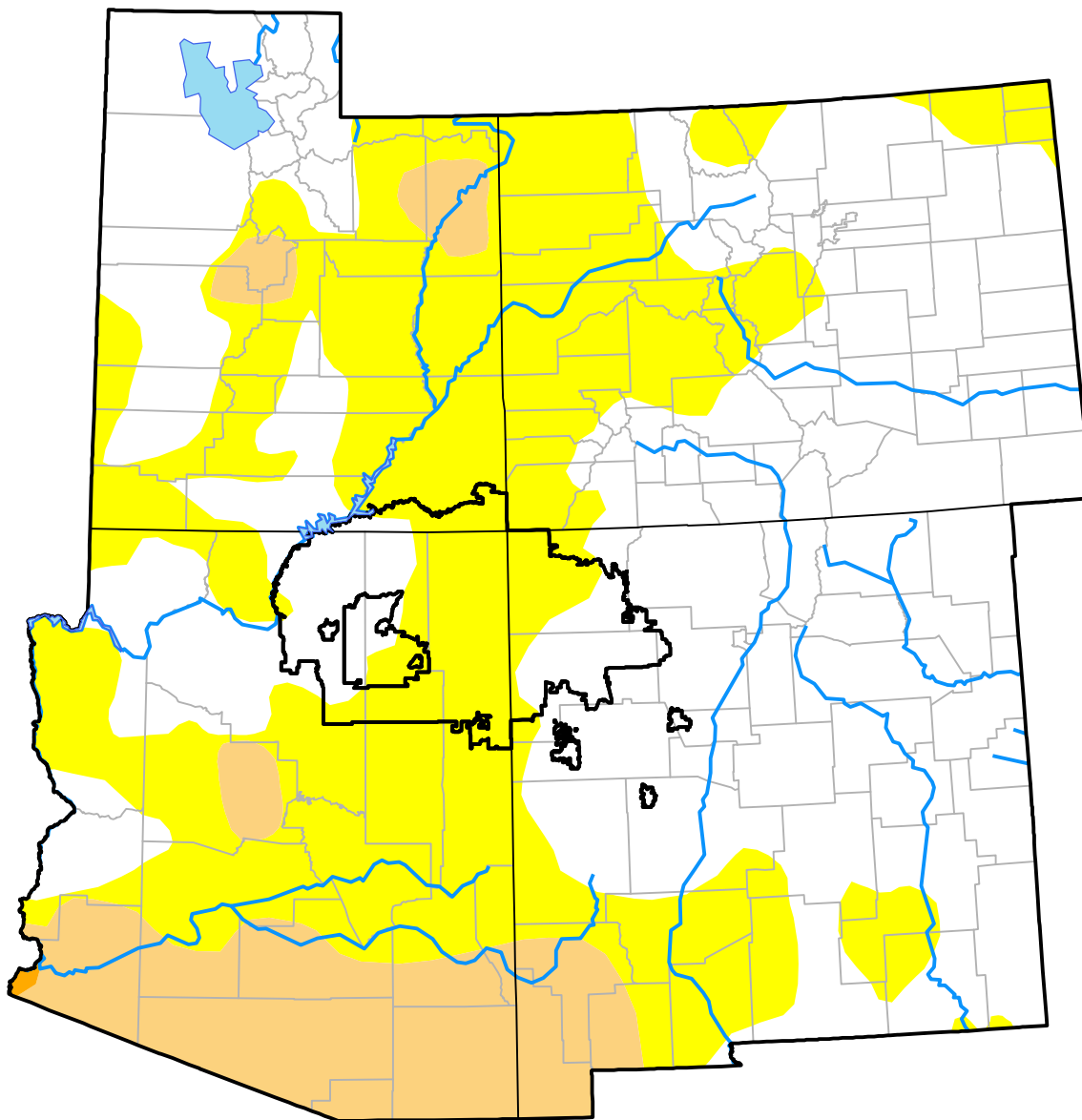
Nebraska RDEWS and Surrounding Areas

(Released Thursday, Jul. 20, 2017)

Valid 8 a.m. EDT

Drought Conditions (Percent Area)

	None	D0	D1	D2	D3	D4
Current	51.82	37.07	11.05	0.06	0.00	0.00
Last Week <i>07-13-2017</i>	58.53	30.36	11.05	0.06	0.00	0.00
3 Months Ago <i>04-20-2017</i>	62.66	30.79	6.48	0.06	0.00	0.00
Start of Calendar Year <i>01-05-2017</i>	46.78	33.57	17.96	1.69	0.00	0.00
Start of Water Year <i>09-29-2016</i>	42.64	40.80	14.95	1.61	0.00	0.00
One Year Ago <i>07-21-2016</i>	36.70	42.87	18.28	2.15	0.00	0.00



Intensity:

- None
- D0 Abnormally Dry
- D1 Moderate Drought
- D2 Severe Drought
- D3 Extreme Drought
- D4 Exceptional Drought

The Drought Monitor focuses on broad-scale conditions. Local conditions may vary. For more information on the Drought Monitor, go to <https://droughtmonitor.unl.edu/About.aspx>

Author:

Richard Heim
NCEI/NOAA

