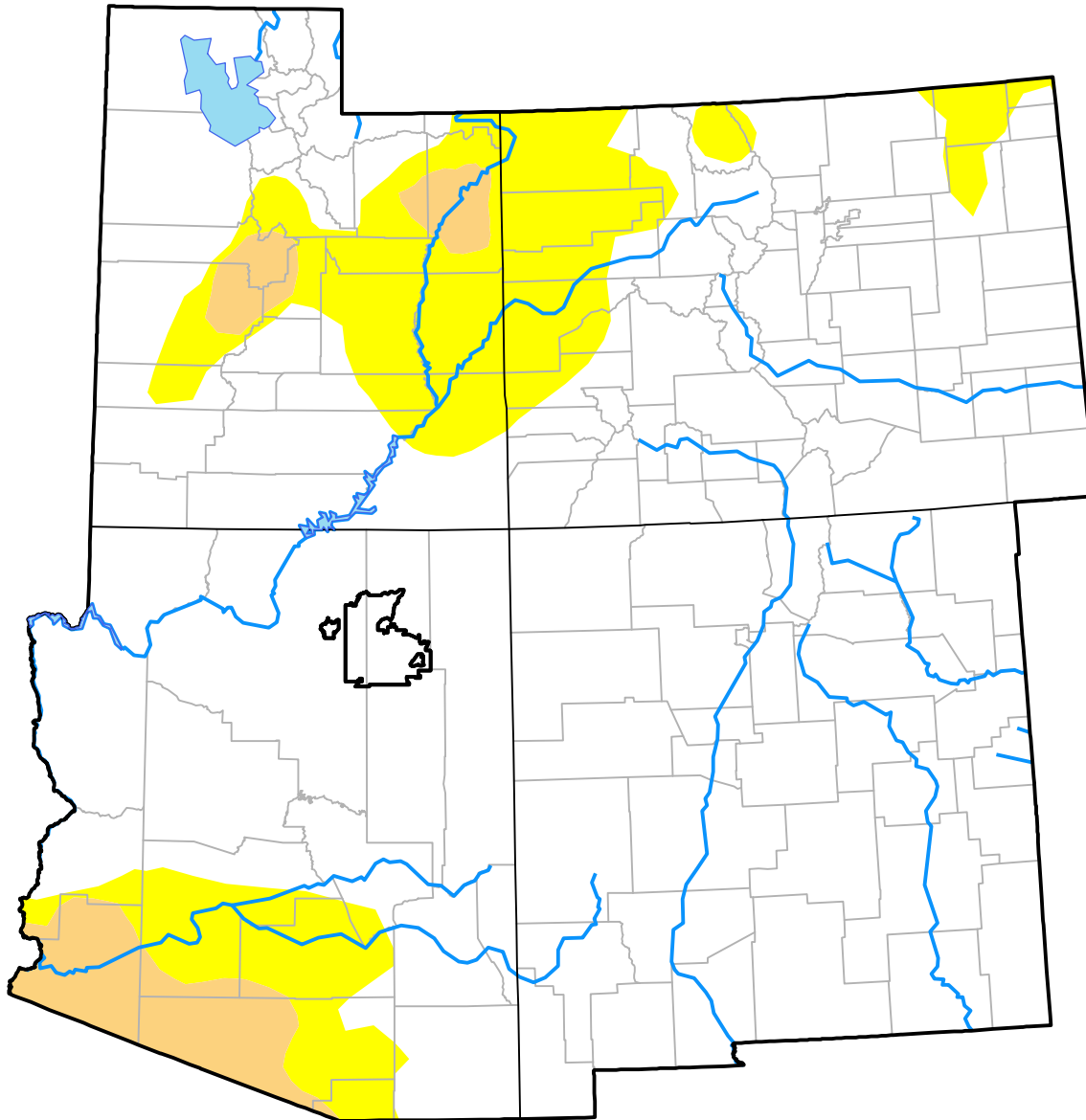


U.S. Drought Monitor Hopi RDEWS

August 29, 2017
(Released Thursday, Aug. 31, 2017)
Valid 8 a.m. EDT



Drought Conditions (Percent Area)

	None	D0-D4	D1-D4	D2-D4	D3-D4	D4
Current	100.00	0.00	0.00	0.00	0.00	0.00
Last Week <i>08-24-2017</i>	100.00	0.00	0.00	0.00	0.00	0.00
3 Months Ago <i>06-01-2017</i>	100.00	0.00	0.00	0.00	0.00	0.00
Start of Calendar Year <i>01-05-2017</i>	0.00	100.00	49.68	0.00	0.00	0.00
Start of Water Year <i>09-29-2016</i>	0.00	100.00	49.68	0.00	0.00	0.00
One Year Ago <i>09-01-2016</i>	0.00	100.00	93.90	0.00	0.00	0.00

Intensity:

- None
- D0 Abnormally Dry
- D1 Moderate Drought
- D2 Severe Drought
- D3 Extreme Drought
- D4 Exceptional Drought

The Drought Monitor focuses on broad-scale conditions. Local conditions may vary. For more information on the Drought Monitor, go to <https://droughtmonitor.unl.edu/About.aspx>

Author:

Chris Fenimore
NCEI/NESDIS/NOAA

