

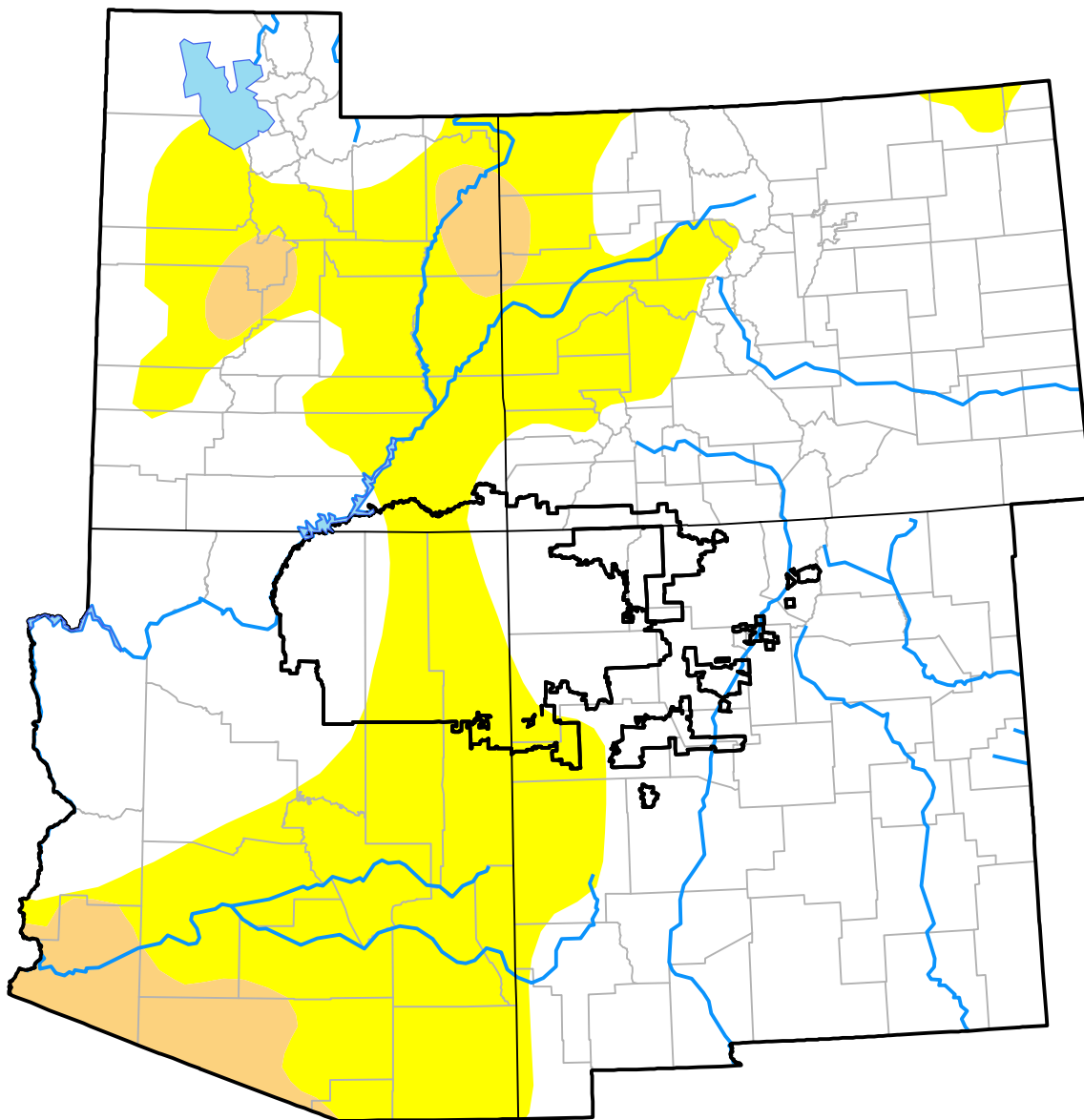
Southwest Corners RDEWS and Surrounding Areas

(Released Thursday, Oct. 12, 2017)

Valid 8 a.m. EDT

Drought Conditions (Percent Area)

	None	D0-D4	D1-D4	D2-D4	D3-D4	D4
Current	65.95	34.05	4.54	0.00	0.00	0.00
Last Week <i>10-05-2017</i>	61.76	38.24	5.16	0.00	0.00	0.00
3 Months Ago <i>07-13-2017</i>	58.53	41.47	11.11	0.06	0.00	0.00
Start of Calendar Year <i>01-05-2017</i>	46.78	53.22	19.65	1.69	0.00	0.00
Start of Water Year <i>09-28-2017</i>	63.16	36.84	5.35	0.00	0.00	0.00
One Year Ago <i>10-13-2016</i>	49.73	50.27	16.56	1.61	0.00	0.00



Intensity:

- None
- D0 Abnormally Dry
- D1 Moderate Drought
- D2 Severe Drought
- D3 Extreme Drought
- D4 Exceptional Drought

The Drought Monitor focuses on broad-scale conditions. Local conditions may vary. For more information on the Drought Monitor, go to <https://droughtmonitor.unl.edu/About.aspx>

Author:

Anthony Artusa
NOAA/NWS/NCEP/CPC

