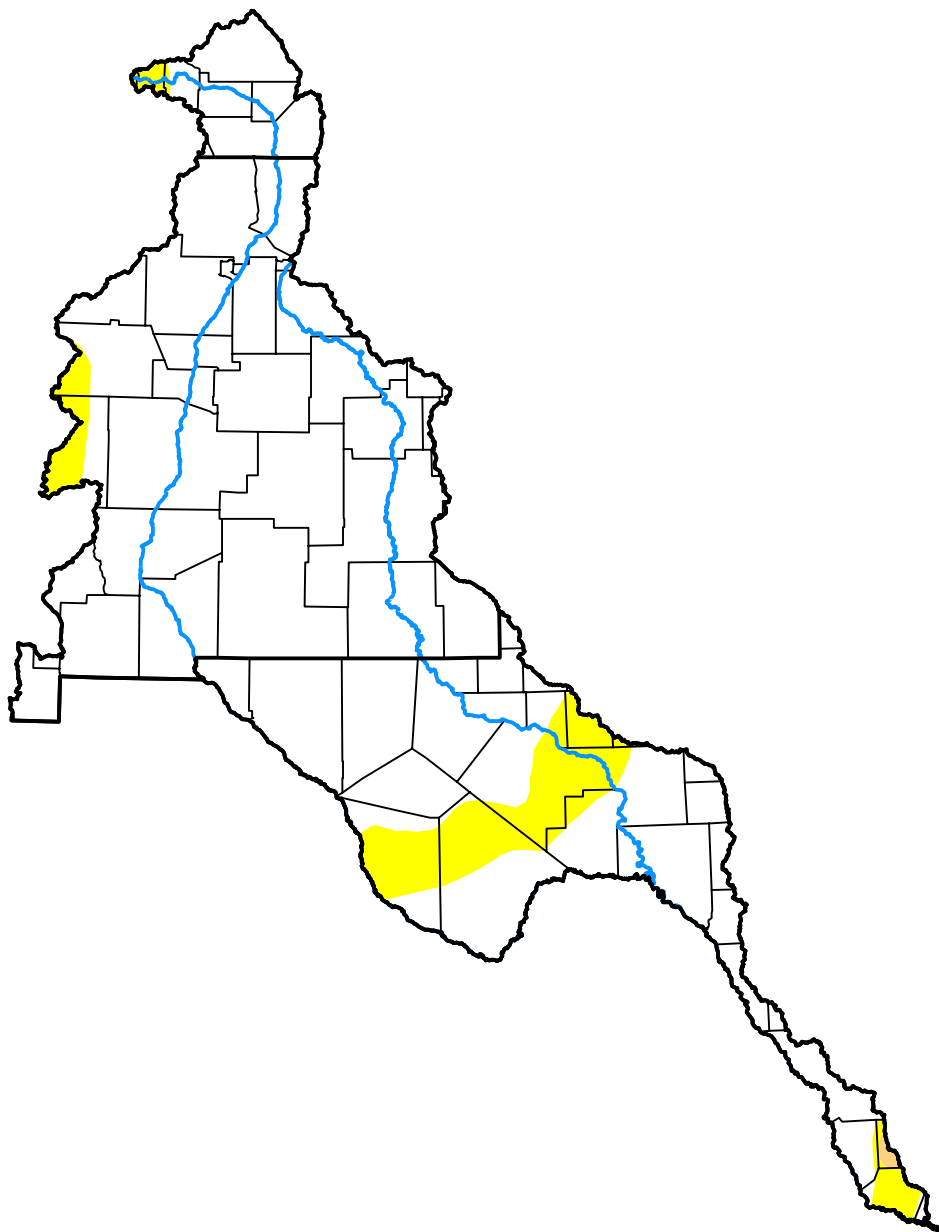


U.S. Drought Monitor

Rio Grande Watershed

October 17, 2017
 (Released Thursday, Oct. 19, 2017)

Valid 8 a.m. EDT



Drought Conditions (Percent Area)

	None	D0	D1	D2	D3	D4
Current	90.46	9.39	0.15	0.00	0.00	0.00
Last Week <i>10-12-2017</i>	95.72	3.54	0.74	0.00	0.00	0.00
3 Months Ago <i>07-20-2017</i>	80.59	16.52	2.88	0.00	0.00	0.00
Start of Calendar Year <i>01-05-2017</i>	83.38	15.70	0.92	0.00	0.00	0.00
Start of Water Year <i>09-28-2017</i>	90.47	8.07	1.45	0.02	0.00	0.00
One Year Ago <i>10-20-2016</i>	69.96	28.80	1.23	0.00	0.00	0.00

Intensity:

- None
- D0 Abnormally Dry
- D1 Moderate Drought
- D2 Severe Drought
- D3 Extreme Drought
- D4 Exceptional Drought

The Drought Monitor focuses on broad-scale conditions. Local conditions may vary. For more information on the Drought Monitor, go to <https://droughtmonitor.unl.edu/About.aspx>

Author:

Jessica Blunden
 NCEI/NOAA



droughtmonitor.unl.edu