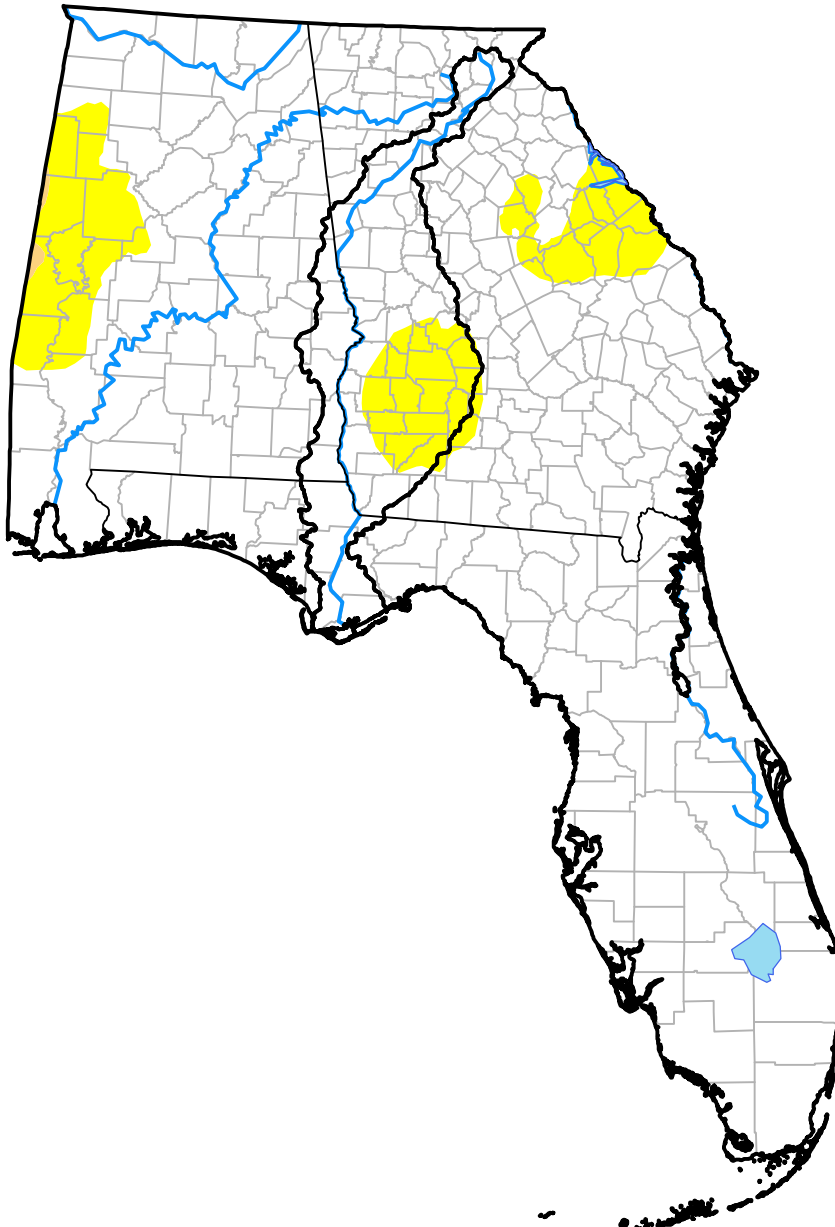


# U.S. Drought Monitor

## ACF River Basin RDEWS

**October 24, 2017**  
 (Released Thursday, Oct. 26, 2017)  
 Valid 8 a.m. EDT



*Drought Conditions (Percent Area)*

|  | None   | D0-D4 | D1-D4 | D2-D4 | D3-D4 | D4   |
|--|--------|-------|-------|-------|-------|------|
| <b>Current</b>                                     | 76.55  | 23.45 | 0.00  | 0.00  | 0.00  | 0.00 |
| <b>Last Week</b><br><i>10-19-2017</i>              | 74.47  | 25.53 | 0.00  | 0.00  | 0.00  | 0.00 |
| <b>3 Months Ago</b><br><i>07-27-2017</i>           | 100.00 | 0.00  | 0.00  | 0.00  | 0.00  | 0.00 |
| <b>Start of Calendar Year</b><br><i>01-05-2017</i> | 18.02  | 81.98 | 61.07 | 31.08 | 9.26  | 0.00 |
| <b>Start of Water Year</b><br><i>09-28-2017</i>    | 100.00 | 0.00  | 0.00  | 0.00  | 0.00  | 0.00 |
| <b>One Year Ago</b><br><i>10-27-2016</i>           | 0.96   | 99.04 | 89.71 | 65.90 | 30.08 | 7.82 |

Intensity:

- None
- D0 Abnormally Dry
- D1 Moderate Drought
- D2 Severe Drought
- D3 Extreme Drought
- D4 Exceptional Drought

*The Drought Monitor focuses on broad-scale conditions. Local conditions may vary. For more information on the Drought Monitor, go to <https://droughtmonitor.unl.edu/About.aspx>*

Author:

Eric Luebehusen  
 U.S. Department of Agriculture

