

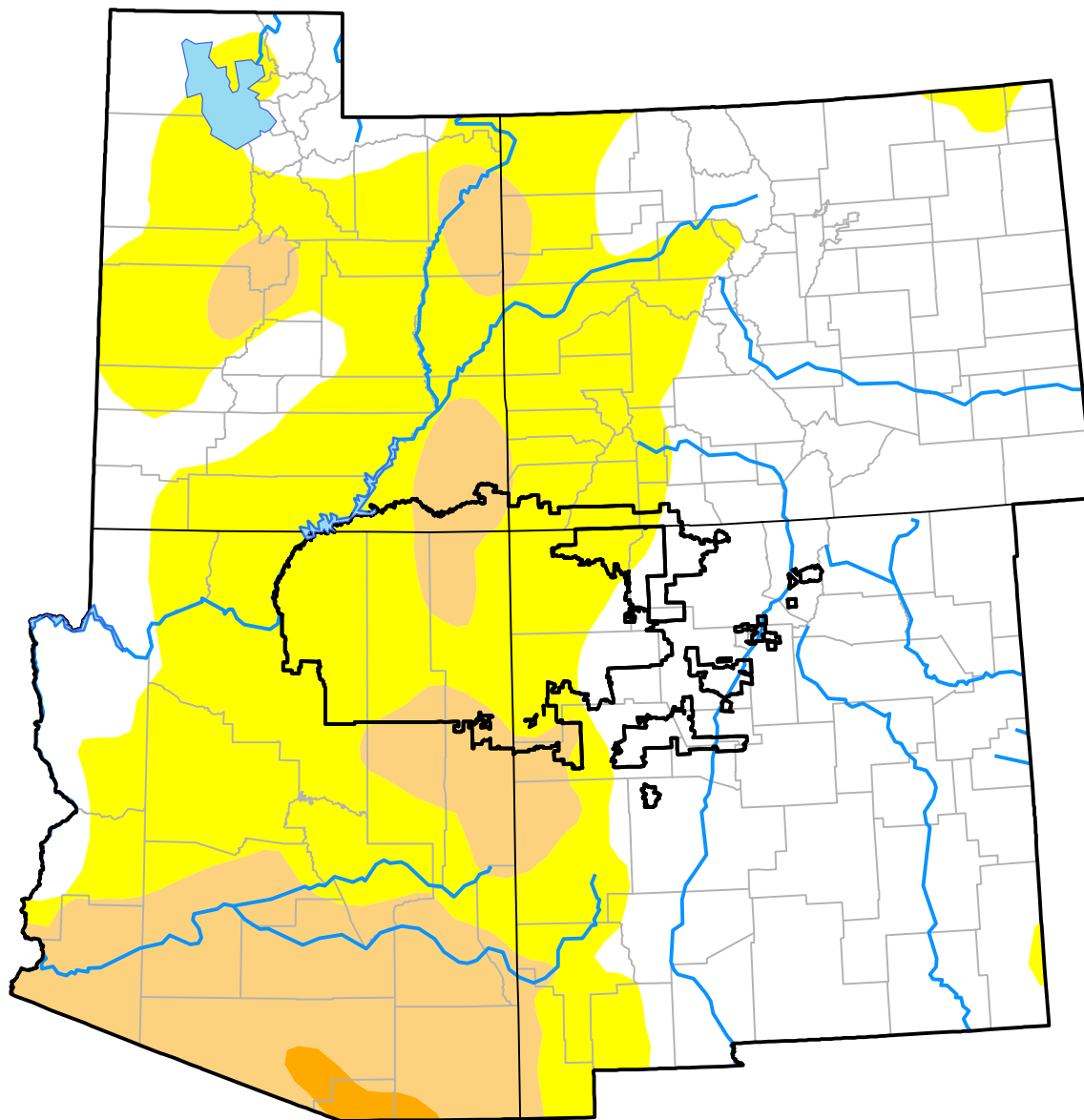
Four Corners RDEWS and Surrounding Areas

(Released Thursday, Nov. 9, 2017)

Valid 7 a.m. EST

Drought Conditions (Percent Area)

	None	D0	D1	D2	D3	D4
Current	48.56	35.59	15.30	0.55	0.00	0.00
Last Week <i>11-02-2017</i>	54.24	31.34	13.87	0.55	0.00	0.00
3 Months Ago <i>08-10-2017</i>	77.77	18.15	4.02	0.06	0.00	0.00
Start of Calendar Year <i>01-05-2017</i>	46.78	33.57	17.96	1.69	0.00	0.00
Start of Water Year <i>09-28-2017</i>	63.16	31.50	5.35	0.00	0.00	0.00
One Year Ago <i>11-10-2016</i>	23.68	52.49	22.22	1.61	0.00	0.00



Intensity:

- None
- D0 Abnormally Dry
- D1 Moderate Drought
- D2 Severe Drought
- D3 Extreme Drought
- D4 Exceptional Drought

The Drought Monitor focuses on broad-scale conditions. Local conditions may vary. For more information on the Drought Monitor, go to <https://droughtmonitor.unl.edu/About.aspx>

Author:

David Miskus
NOAA/NWS/NCEP/CPC

