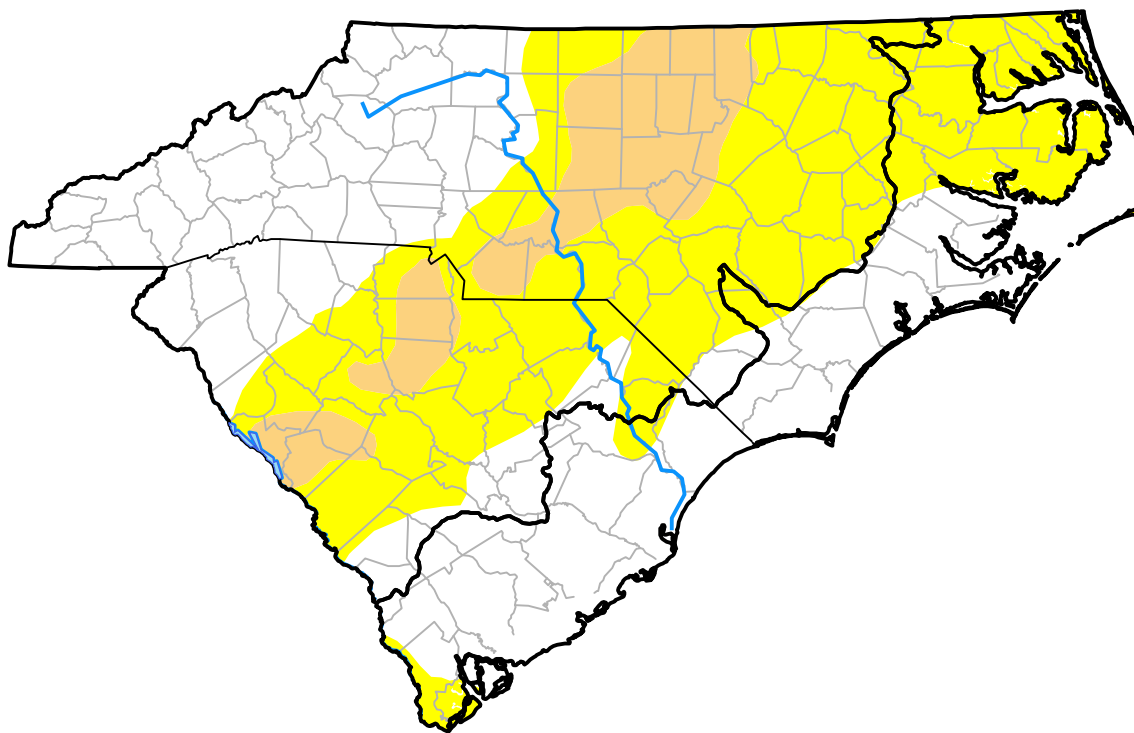


# U.S. Drought Monitor

## Coastal Carolinas RDEWS

**November 14, 2017**  
 (Released Thursday, Nov. 16, 2017)

Valid 7 a.m. EST



*Drought Conditions (Percent Area)*

	None	D0-D4	D1-D4	D2-D4	D3-D4	D4
<b>Current</b>	66.66	33.34	0.00	0.00	0.00	0.00
<b>Last Week</b> <i>11-09-2017</i>	70.13	29.87	0.00	0.00	0.00	0.00
<b>3 Months Ago</b> <i>08-17-2017</i>	97.57	2.43	0.00	0.00	0.00	0.00
<b>Start of Calendar Year</b> <i>01-05-2017</i>	74.47	25.53	0.00	0.00	0.00	0.00
<b>Start of Water Year</b> <i>09-28-2017</i>	100.00	0.00	0.00	0.00	0.00	0.00
<b>One Year Ago</b> <i>11-17-2016</i>	100.00	0.00	0.00	0.00	0.00	0.00

*Intensity:*



*The Drought Monitor focuses on broad-scale conditions. Local conditions may vary. For more information on the Drought Monitor, go to <https://droughtmonitor.unl.edu/About.aspx>*

*Author:*

Richard Tinker  
 CPC/NOAA/NWS/NCEP



**droughtmonitor.unl.edu**