

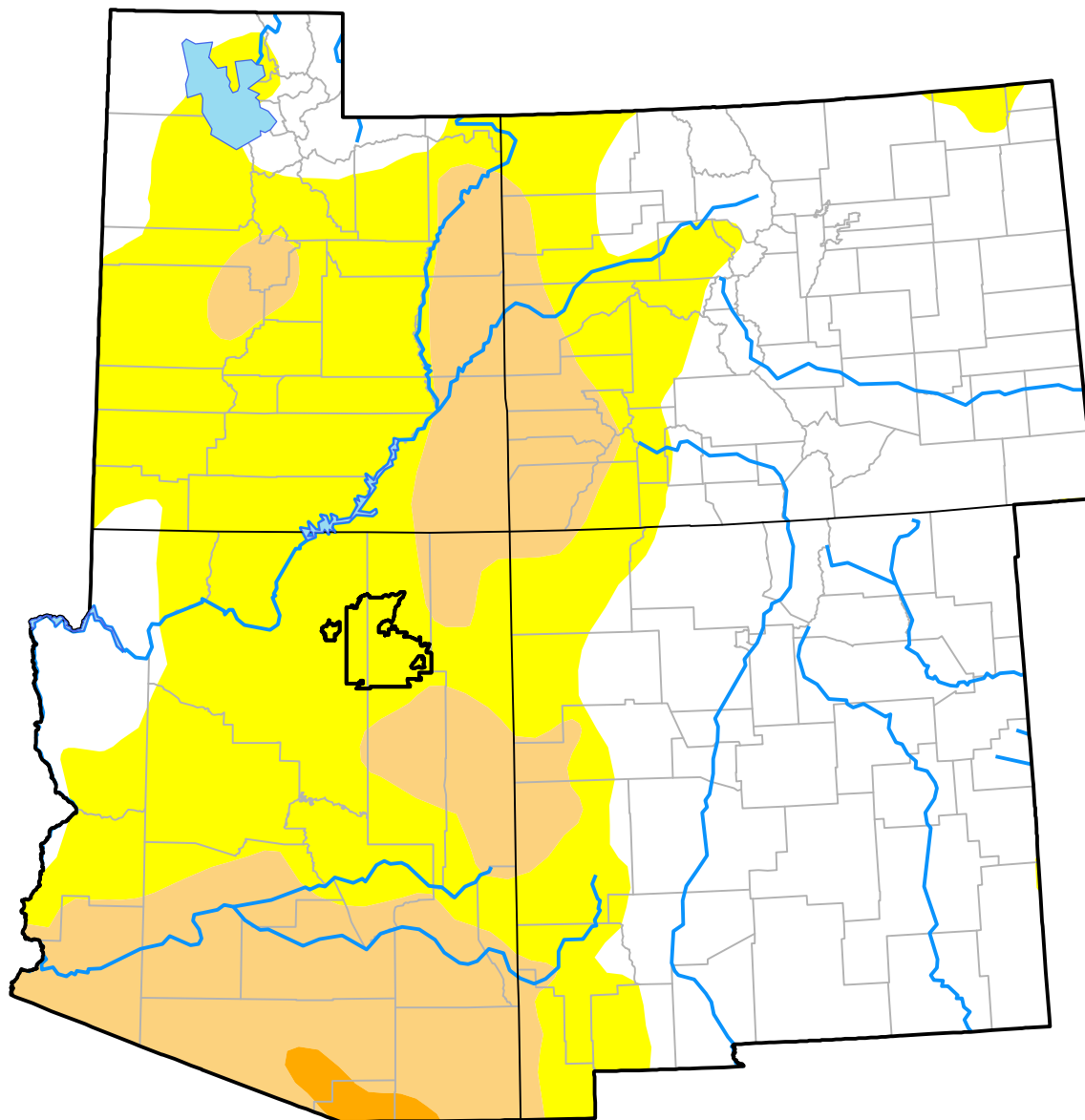
Opportunity RDEWS and Surrounding Areas

(Released Wednesday, Nov. 22, 2017)

Valid 7 a.m. EST

Drought Conditions (Percent Area)

	None	D0-D4	D1-D4	D2-D4	D3-D4	D4
Current	46.12	53.88	19.26	0.55	0.00	0.00
Last Week <i>11-16-2017</i>	47.55	52.45	15.85	0.55	0.00	0.00
3 Months Ago <i>08-24-2017</i>	82.75	17.25	4.15	0.00	0.00	0.00
Start of Calendar Year <i>01-05-2017</i>	46.78	53.22	19.65	1.69	0.00	0.00
Start of Water Year <i>09-28-2017</i>	63.16	36.84	5.35	0.00	0.00	0.00
One Year Ago <i>11-23-2016</i>	23.68	76.32	24.90	2.14	0.00	0.00



Intensity:

- None
- D0 Abnormally Dry
- D1 Moderate Drought
- D2 Severe Drought
- D3 Extreme Drought
- D4 Exceptional Drought

The Drought Monitor focuses on broad-scale conditions. Local conditions may vary. For more information on the Drought Monitor, go to <https://droughtmonitor.unl.edu/About.aspx>

Author:

Richard Tinker
CPC/NOAA/NWS/NCEP

