

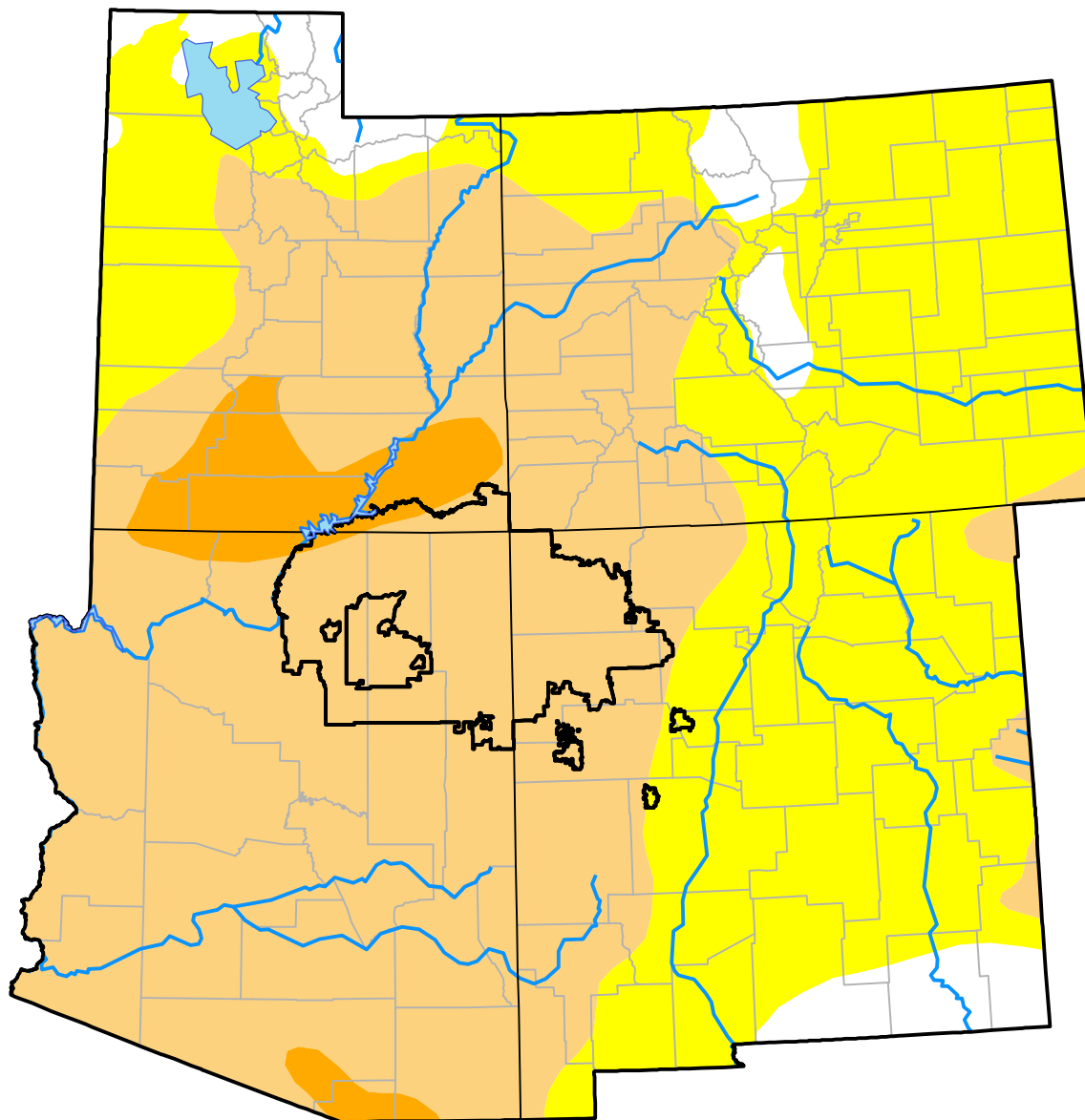
Nebraska RDEWS and Surrounding Areas

(Released Thursday, Dec. 28, 2017)

Valid 7 a.m. EST

Drought Conditions (Percent Area)

	None	D0	D1	D2	D3	D4
Current	5.75	39.66	50.20	4.40	0.00	0.00
Last Week <i>12-21-2017</i>	6.70	42.55	46.36	4.40	0.00	0.00
3 Months Ago <i>09-28-2017</i>	63.16	31.50	5.35	0.00	0.00	0.00
Start of Calendar Year <i>01-05-2017</i>	46.78	33.57	17.96	1.69	0.00	0.00
Start of Water Year <i>09-28-2017</i>	63.16	31.50	5.35	0.00	0.00	0.00
One Year Ago <i>12-29-2016</i>	42.30	35.83	20.18	1.69	0.00	0.00



Intensity:

- None
- D0 Abnormally Dry
- D1 Moderate Drought
- D2 Severe Drought
- D3 Extreme Drought
- D4 Exceptional Drought

The Drought Monitor focuses on broad-scale conditions. Local conditions may vary. For more information on the Drought Monitor, go to <https://droughtmonitor.unl.edu/About.aspx>

Author:

David Miskus
NOAA/NWS/NCEP/CPC

