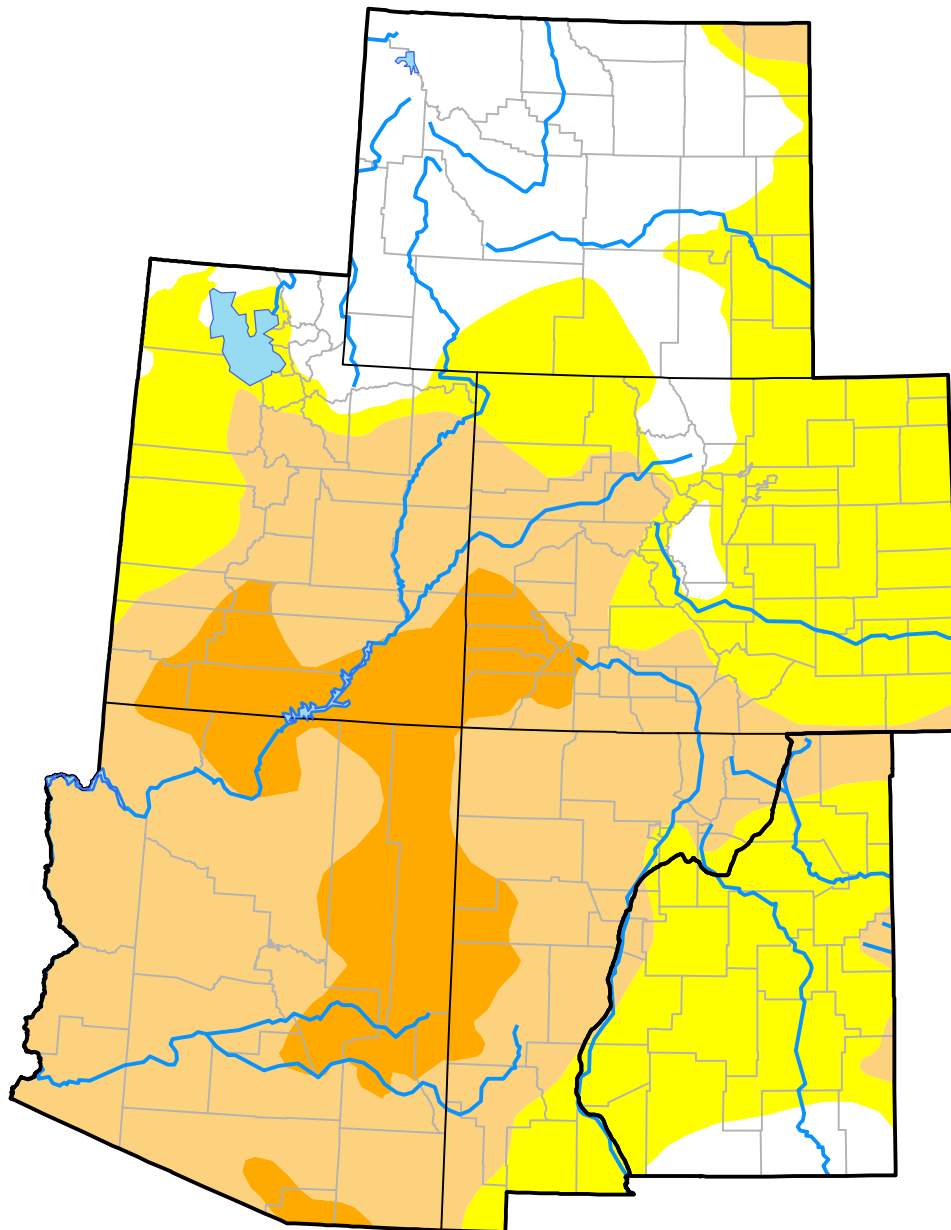


# U.S. Drought Monitor

## Intermountain West RDEWS

**January 2, 2018**  
 (Released Thursday, Jan. 4, 2018)  
 Valid 7 a.m. EST



*Drought Conditions (Percent Area)*

	None	D0-D4	D1-D4	D2-D4	D3-D4	D4
<b>Current</b>	18.60	81.40	49.50	12.00	0.00	0.00
<b>Last Week</b> <i>12-28-2017</i>	18.73	81.27	44.74	3.57	0.00	0.00
<b>3 Months Ago</b> <i>10-05-2017</i>	65.41	34.59	4.59	0.00	0.00	0.00
<b>Start of Calendar Year</b> <i>01-04-2018</i>	18.60	81.40	49.50	12.00	0.00	0.00
<b>Start of Water Year</b> <i>09-28-2017</i>	66.55	33.45	4.74	0.00	0.00	0.00
<b>One Year Ago</b> <i>01-05-2017</i>	49.44	50.56	18.89	1.51	0.00	0.00

***Intensity:***



*The Drought Monitor focuses on broad-scale conditions. Local conditions may vary. For more information on the Drought Monitor, go to <https://droughtmonitor.unl.edu/About.aspx>*

***Author:***

Eric Luebehusen  
 U.S. Department of Agriculture



**droughtmonitor.unl.edu**