

U.S. Drought Monitor

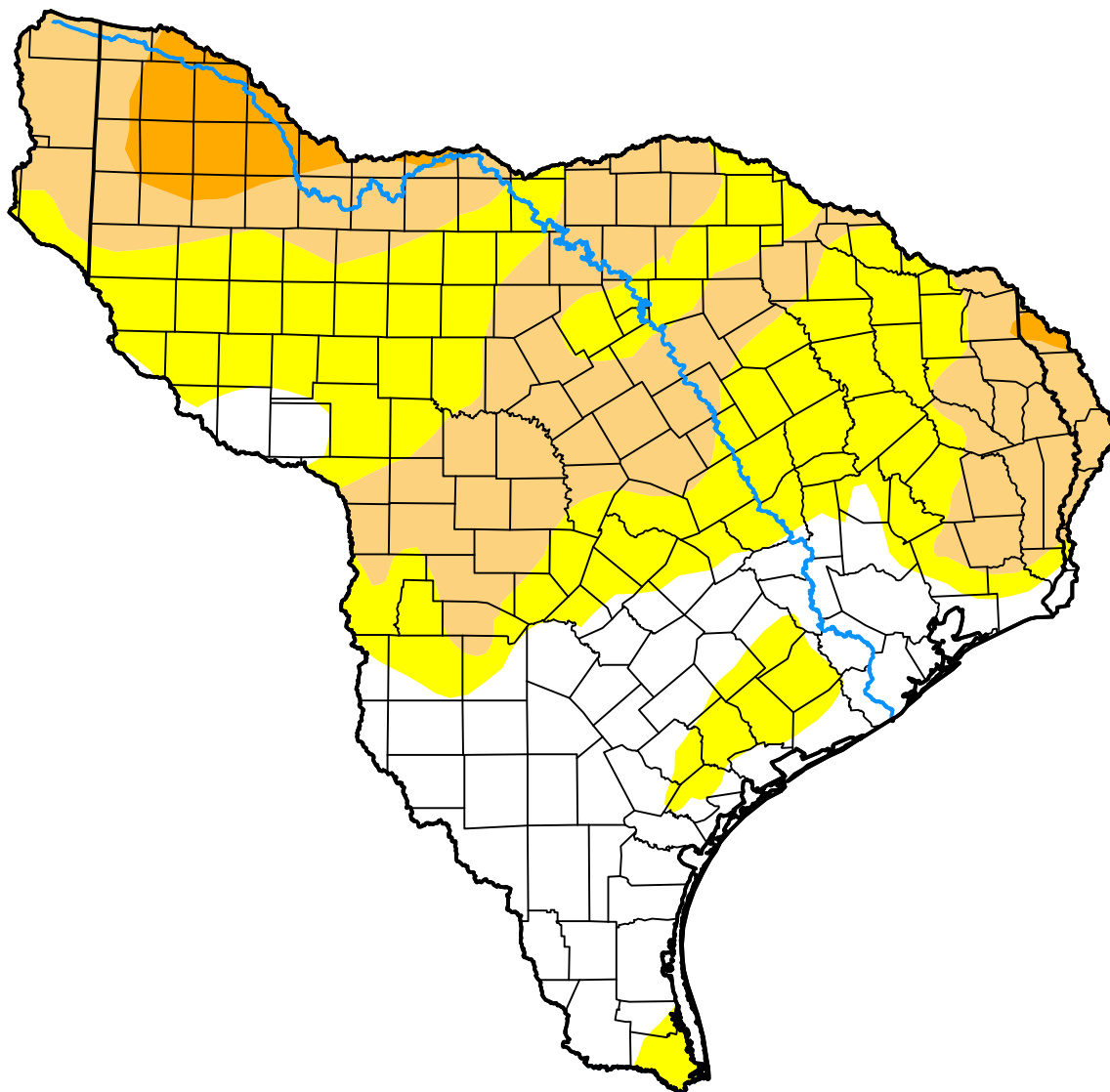
Texas-Gulf Watershed

January 9, 2018
(Released Thursday, Jan. 11, 2018)

Valid 7 a.m. EST

Drought Conditions (Percent Area)

	None	D0-D4	D1-D4	D2-D4	D3-D4	D4
Current	26.43	73.57	36.25	4.38	0.00	0.00
Last Week <i>01-04-2018</i>	32.25	67.75	32.02	3.02	0.00	0.00
3 Months Ago <i>10-12-2017</i>	88.39	11.61	1.32	0.00	0.00	0.00
Start of Calendar Year <i>01-04-2018</i>	32.25	67.75	32.02	3.02	0.00	0.00
Start of Water Year <i>09-28-2017</i>	67.08	32.92	4.81	0.04	0.00	0.00
One Year Ago <i>01-12-2017</i>	75.81	24.19	4.10	0.02	0.00	0.00



Intensity:

- None
- D2 Severe Drought
- D0 Abnormally Dry
- D3 Extreme Drought
- D1 Moderate Drought
- D4 Exceptional Drought

The Drought Monitor focuses on broad-scale conditions. Local conditions may vary. For more information on the Drought Monitor, go to <https://droughtmonitor.unl.edu/About.aspx>

Author:

Brian Fuchs
National Drought Mitigation Center

