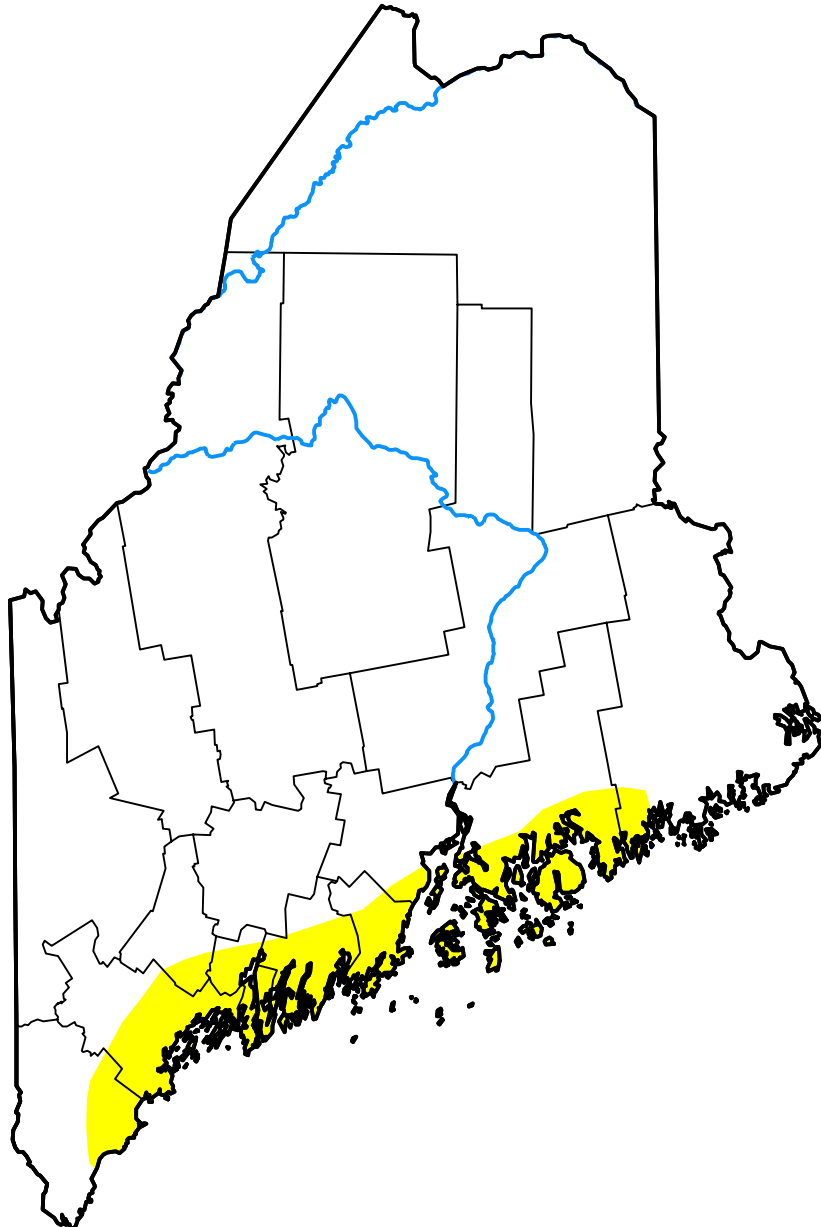


U.S. Drought Monitor

Maine

January 16, 2018
 (Released Thursday, Jan. 18, 2018)
 Valid 7 a.m. EST



Drought Conditions (Percent Area)

	None	D0-D4	D1-D4	D2-D4	D3-D4	D4
Current	92.38	7.62	0.00	0.00	0.00	0.00
Last Week <i>01-11-2018</i>	92.38	7.62	0.00	0.00	0.00	0.00
3 Months Ago <i>10-19-2017</i>	6.72	93.28	29.50	0.00	0.00	0.00
Start of Calendar Year <i>01-04-2018</i>	92.38	7.62	0.00	0.00	0.00	0.00
Start of Water Year <i>09-28-2017</i>	57.81	42.19	24.62	0.00	0.00	0.00
One Year Ago <i>01-19-2017</i>	28.13	71.87	54.41	0.57	0.00	0.00

Intensity:



The Drought Monitor focuses on broad-scale conditions. Local conditions may vary. For more information on the Drought Monitor, go to <https://droughtmonitor.unl.edu/About.aspx>

Author:

Brian Fuchs
 National Drought Mitigation Center

