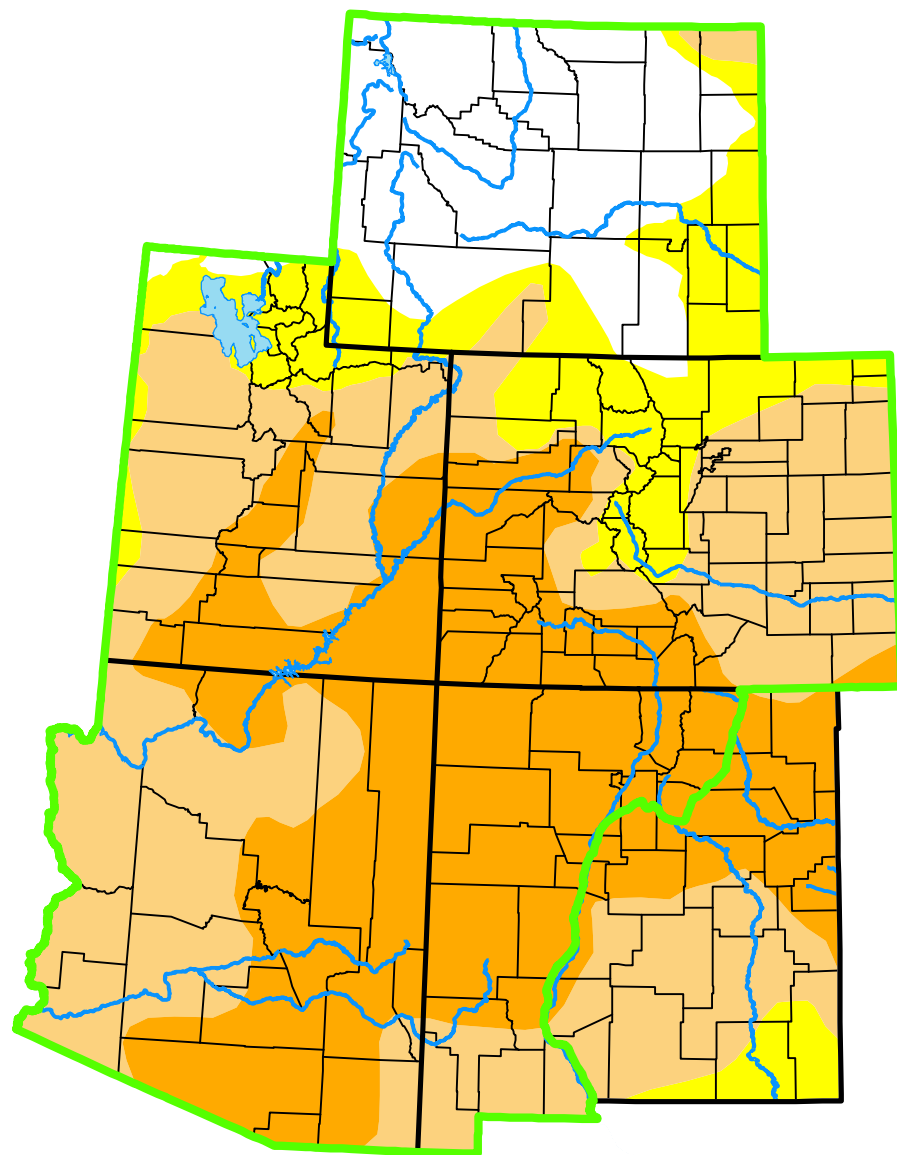


U.S. Drought Monitor

Intermountain West DEWS and Surrounding Areas



January 23, 2018

(Released Thursday, Jan. 25, 2018)

Valid 7 a.m. EST

Drought Conditions (Percent Area)

	None	D0-D4	D1-D4	D2-D4	D3-D4	D4
Current	15.64	84.36	70.34	35.39	0.00	0.00
Last Week <i>01-16-2018</i>	15.64	84.36	70.08	19.90	0.00	0.00
3 Months Ago <i>10-24-2017</i>	58.92	41.08	8.73	0.00	0.00	0.00
Start of Calendar Year <i>01-02-2018</i>	19.30	80.70	54.76	13.66	0.00	0.00
Start of Water Year <i>09-26-2017</i>	61.94	38.06	5.39	0.00	0.00	0.00
One Year Ago <i>01-24-2017</i>	60.15	39.85	15.82	1.23	0.00	0.00

(Statistics for area highlighted in green)

Intensity:

None	D2 Severe Drought
D0 Abnormally Dry	D3 Extreme Drought
D1 Moderate Drought	D4 Exceptional Drought

The Drought Monitor focuses on broad-scale conditions. Local conditions may vary. For more information on the Drought Monitor, go to <https://droughtmonitor.unl.edu/About.aspx>

Author:

Richard Heim
NCEI/NOAA



droughtmonitor.unl.edu