

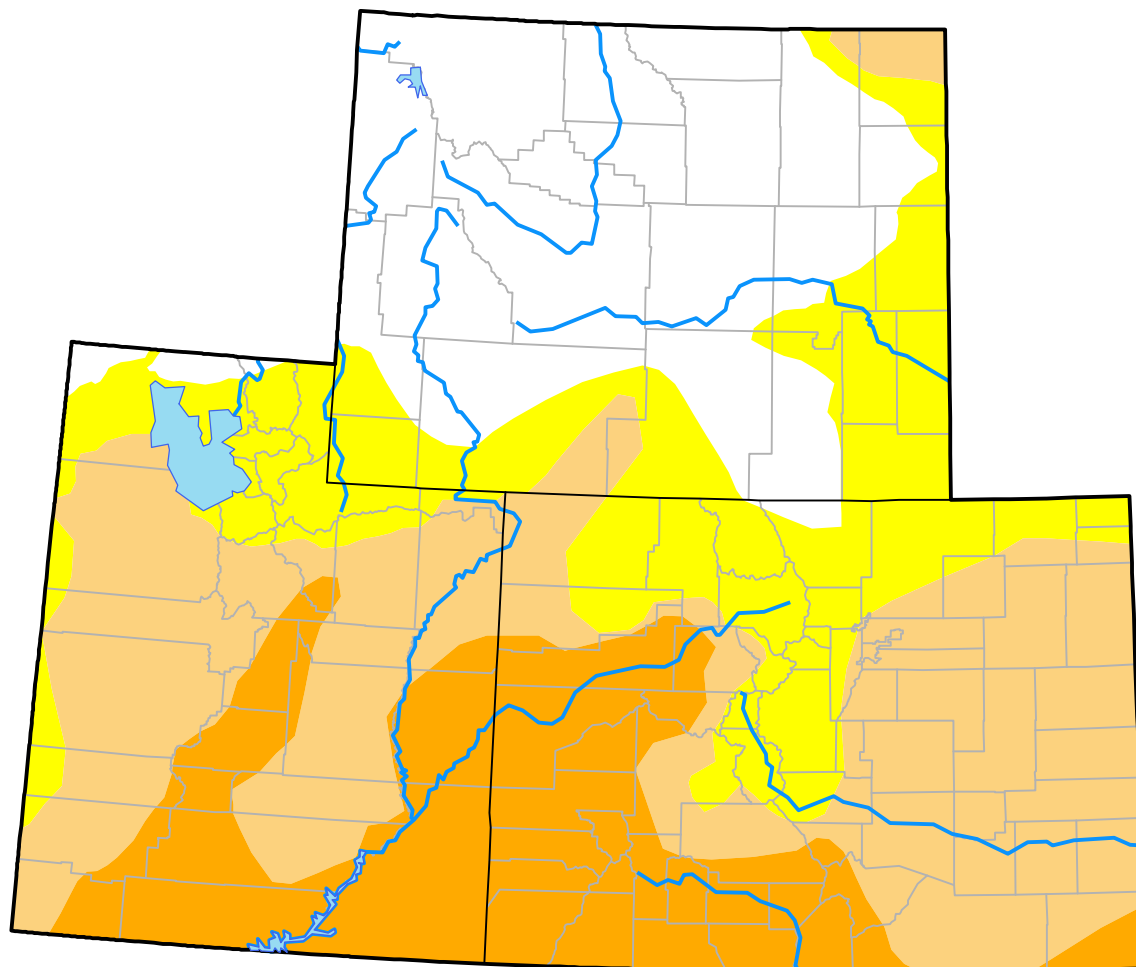
Upper Colorado River Basin RDEWS

(Released Thursday, Jan. 25, 2018)

Valid 7 a.m. EST

Drought Conditions (Percent Area)

	None	D0	D1	D2	D3	D4
Current	25.04	22.44	32.54	19.97	0.00	0.00
Last Week <i>01-18-2018</i>	25.04	22.44	34.71	17.80	0.00	0.00
3 Months Ago <i>10-26-2017</i>	67.42	29.34	3.24	0.00	0.00	0.00
Start of Calendar Year <i>01-04-2018</i>	30.90	38.18	22.48	8.45	0.00	0.00
Start of Water Year <i>09-28-2017</i>	67.08	28.54	4.38	0.00	0.00	0.00
One Year Ago <i>01-26-2017</i>	60.47	23.51	15.50	0.52	0.00	0.00



Intensity:

- None
- D0 Abnormally Dry
- D1 Moderate Drought
- D2 Severe Drought
- D3 Extreme Drought
- D4 Exceptional Drought

The Drought Monitor focuses on broad-scale conditions. Local conditions may vary. For more information on the Drought Monitor, go to <https://droughtmonitor.unl.edu/About.aspx>

Author:

Richard Heim
NCEI/NOAA

