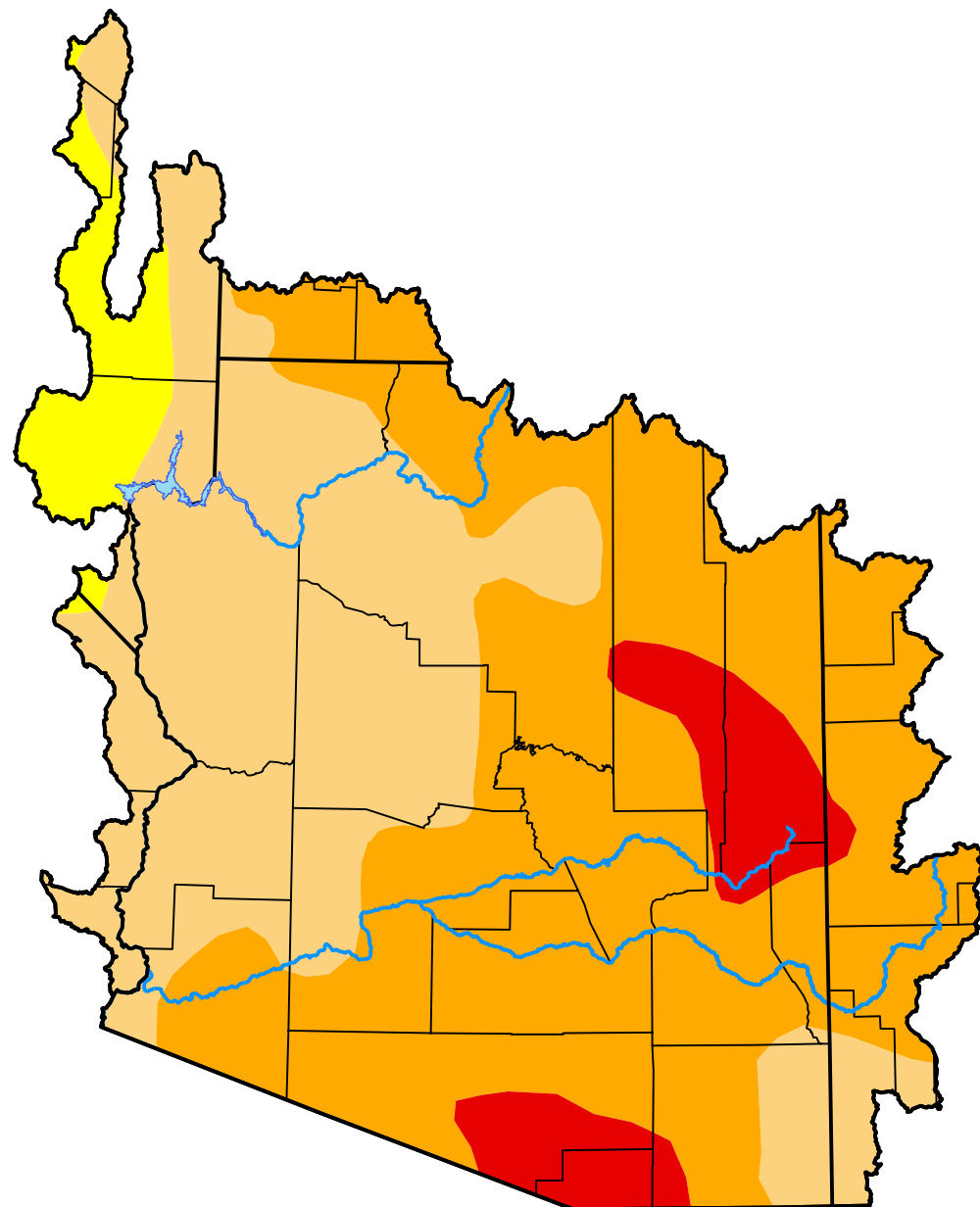


U.S. Drought Monitor

Lower Colorado Watershed

February 6, 2018
 (Released Thursday, Feb. 8, 2018)
 Valid 7 a.m. EST



Drought Conditions (Percent Area)

	None	D0	D1	D2	D3	D4
Current	0.00	4.83	36.96	50.74	7.48	0.00
Last Week <i>02-01-2018</i>	0.00	4.74	39.21	48.58	7.48	0.00
3 Months Ago <i>11-09-2017</i>	19.11	42.41	36.81	1.67	0.00	0.00
Start of Calendar Year <i>01-04-2018</i>	0.00	6.76	68.34	24.90	0.00	0.00
Start of Water Year <i>09-28-2017</i>	48.41	42.50	9.09	0.00	0.00	0.00
One Year Ago <i>02-09-2017</i>	53.78	34.18	11.29	0.75	0.00	0.00

Intensity:

- None
- D0 Abnormally Dry
- D1 Moderate Drought
- D2 Severe Drought
- D3 Extreme Drought
- D4 Exceptional Drought

The Drought Monitor focuses on broad-scale conditions. Local conditions may vary. For more information on the Drought Monitor, go to <https://droughtmonitor.unl.edu/About.aspx>

Author:

Eric Luebehusen
 U.S. Department of Agriculture



droughtmonitor.unl.edu