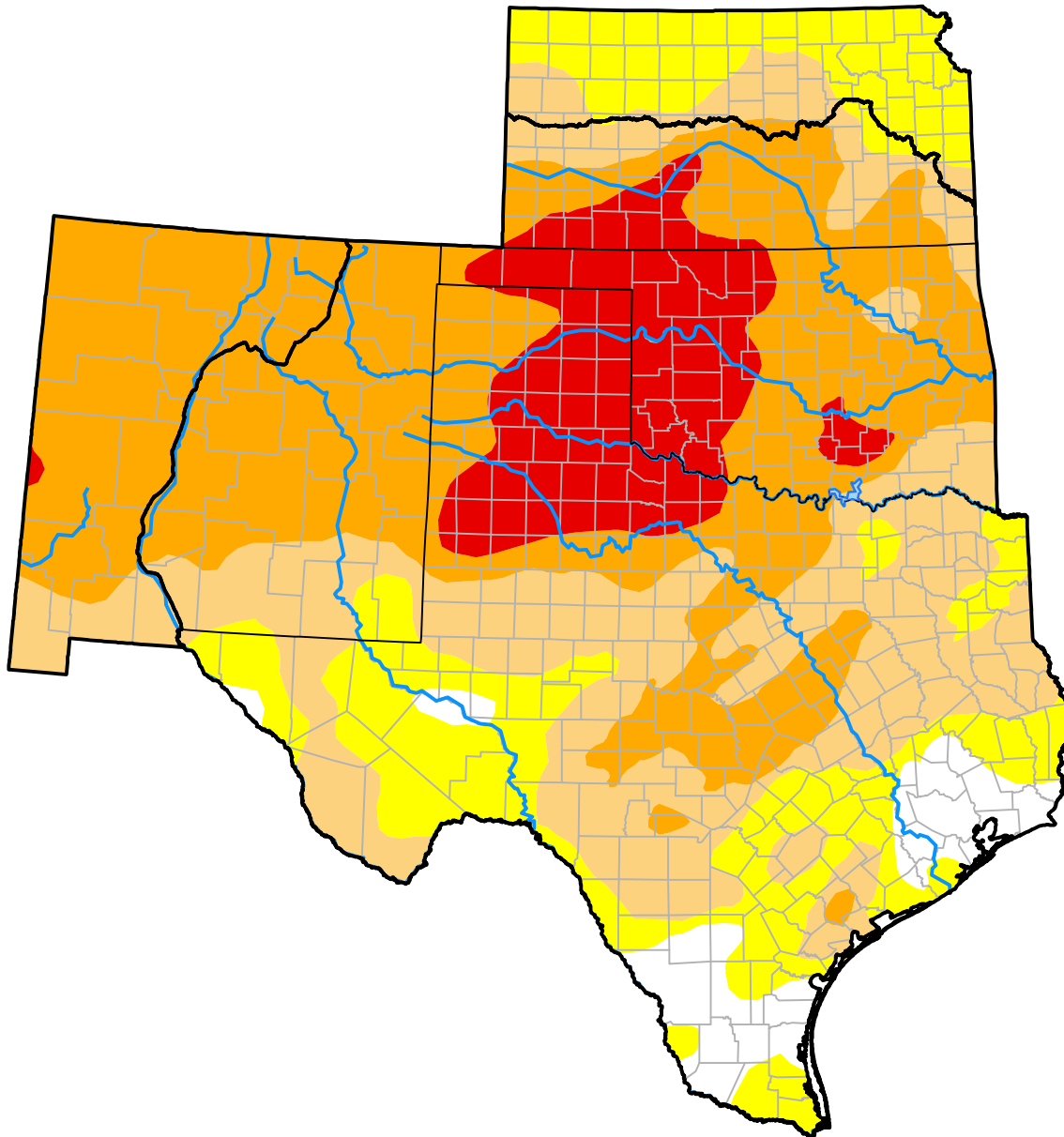


U.S. Drought Monitor

Southern Plains RDEWS

February 6, 2018
 (Released Thursday, Feb. 8, 2018)
 Valid 7 a.m. EST



Drought Conditions (Percent Area)

	None	D0-D4	D1-D4	D2-D4	D3-D4	D4
Current	5.67	94.33	78.91	51.90	12.70	0.00
Last Week <i>02-01-2018</i>	7.70	92.30	73.13	43.35	7.54	0.00
3 Months Ago <i>11-09-2017</i>	65.50	34.50	7.44	0.34	0.00	0.00
Start of Calendar Year <i>01-04-2018</i>	21.24	78.76	43.54	10.65	0.06	0.00
Start of Water Year <i>09-28-2017</i>	73.50	26.50	2.54	0.02	0.00	0.00
One Year Ago <i>02-09-2017</i>	76.66	23.34	14.81	5.47	0.73	0.00

Intensity:

- None
- D0 Abnormally Dry
- D1 Moderate Drought
- D2 Severe Drought
- D3 Extreme Drought
- D4 Exceptional Drought

The Drought Monitor focuses on broad-scale conditions. Local conditions may vary. For more information on the Drought Monitor, go to <https://droughtmonitor.unl.edu/About.aspx>

Author:

Eric Luebehusen
 U.S. Department of Agriculture

