

U.S. Drought Monitor

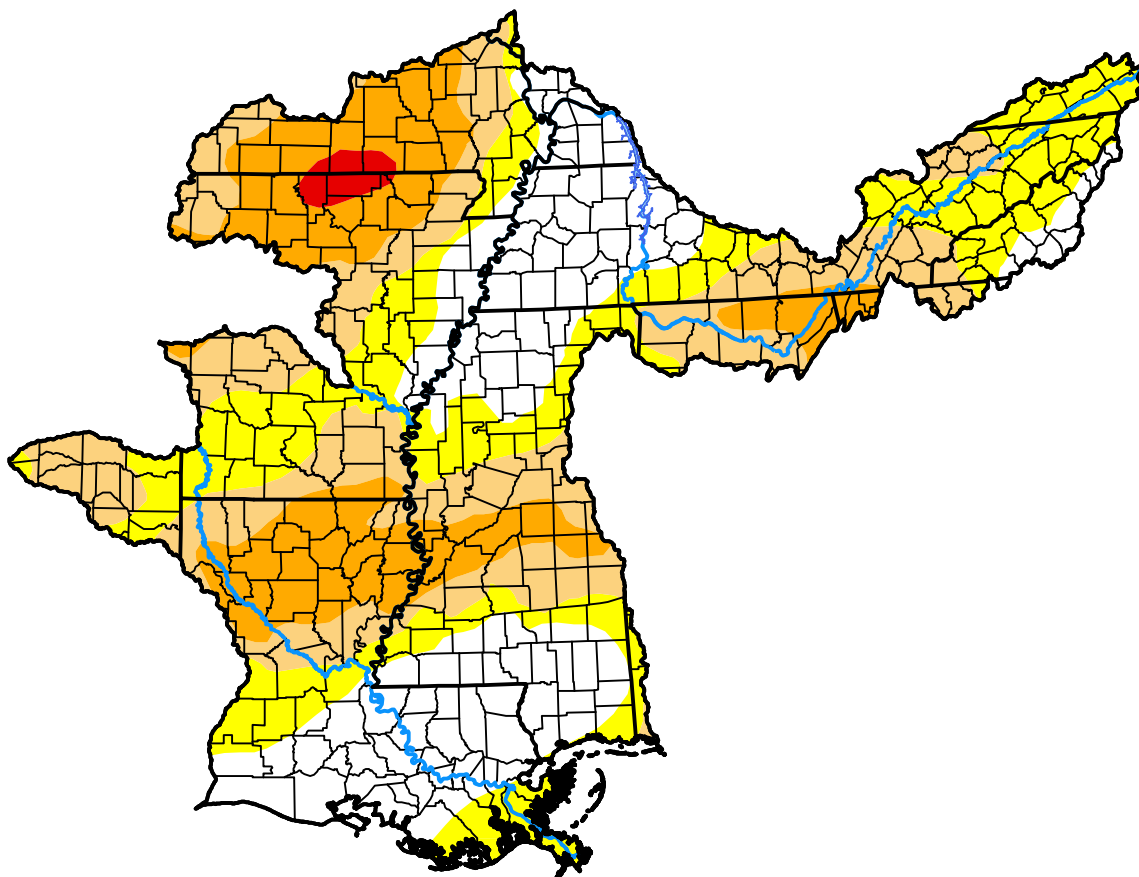
Lower Mississippi RFC

February 6, 2018
 (Released Thursday, Feb. 8, 2018)

Valid 7 a.m. EST

Drought Conditions (Percent Area)

	None	D0	D1	D2	D3	D4
Current	28.56	26.44	25.54	18.40	1.06	0.00
Last Week <i>02-01-2018</i>	28.40	27.46	22.93	20.15	1.06	0.00
3 Months Ago <i>11-09-2017</i>	55.91	17.40	17.34	9.35	0.00	0.00
Start of Calendar Year <i>01-04-2018</i>	37.69	22.10	20.45	18.71	1.06	0.00
Start of Water Year <i>09-28-2017</i>	73.03	26.29	0.68	0.00	0.00	0.00
One Year Ago <i>02-09-2017</i>	53.76	29.39	11.81	4.57	0.46	0.00



Intensity:

- None
- D0 Abnormally Dry
- D1 Moderate Drought
- D2 Severe Drought
- D3 Extreme Drought
- D4 Exceptional Drought

The Drought Monitor focuses on broad-scale conditions. Local conditions may vary. For more information on the Drought Monitor, go to <https://droughtmonitor.unl.edu/About.aspx>

Author:

Eric Luebehusen
 U.S. Department of Agriculture

