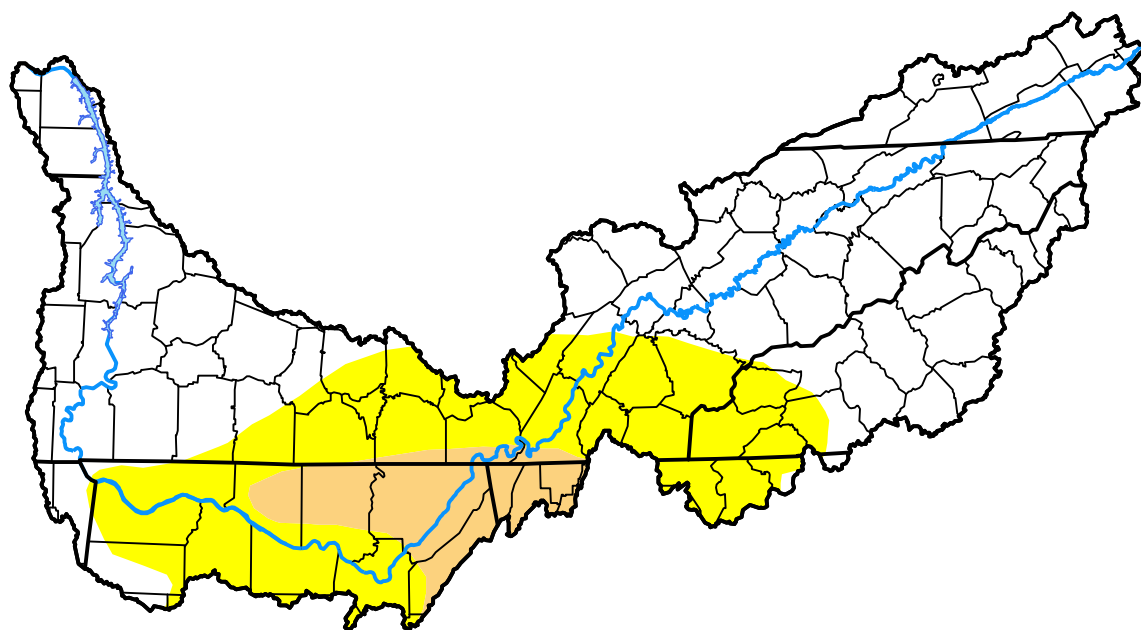


U.S. Drought Monitor Tennessee Watershed

February 13, 2018
(Released Thursday, Feb. 15, 2018)
Valid 7 a.m. EST



Drought Conditions (Percent Area)

	None	D0	D1	D2	D3	D4
Current	62.98	28.83	8.19	0.00	0.00	0.00
Last Week <i>02-08-2018</i>	18.61	42.55	30.55	8.29	0.00	0.00
3 Months Ago <i>11-16-2017</i>	97.33	2.67	0.00	0.00	0.00	0.00
Start of Calendar Year <i>01-04-2018</i>	68.70	31.30	0.00	0.00	0.00	0.00
Start of Water Year <i>09-28-2017</i>	88.33	11.67	0.00	0.00	0.00	0.00
One Year Ago <i>02-16-2017</i>	21.59	29.99	31.87	14.60	1.95	0.00

Intensity:

None	D2 Severe Drought
D0 Abnormally Dry	D3 Extreme Drought
D1 Moderate Drought	D4 Exceptional Drought

The Drought Monitor focuses on broad-scale conditions. Local conditions may vary. For more information on the Drought Monitor, go to <https://droughtmonitor.unl.edu/About.aspx>

Author:

Eric Luebehusen
U.S. Department of Agriculture



droughtmonitor.unl.edu