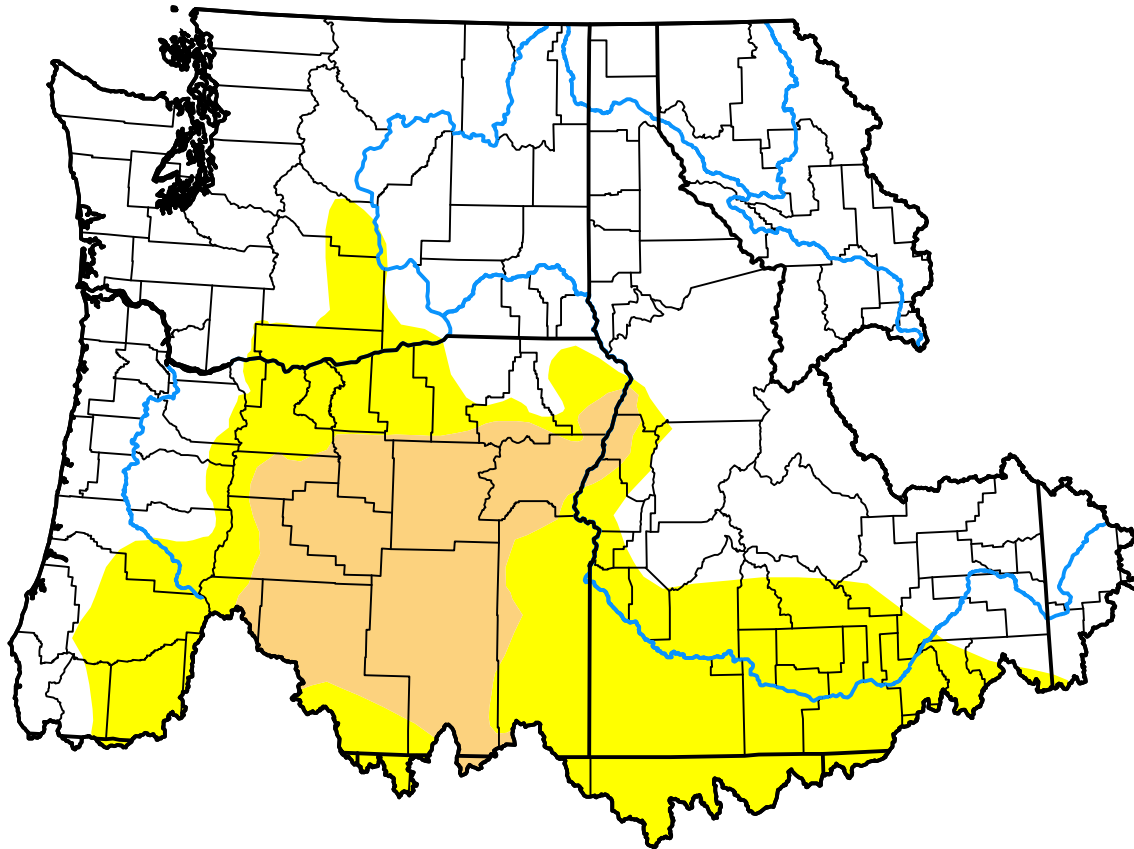


U.S. Drought Monitor

Pacific Northwest Watershed

February 20, 2018
 (Released Thursday, Feb. 22, 2018)
 Valid 7 a.m. EST



Drought Conditions (Percent Area)

	None	D0-D4	D1-D4	D2-D4	D3-D4	D4
Current	60.29	39.71	12.52	0.00	0.00	0.00
Last Week <i>02-15-2018</i>	60.29	39.71	8.86	0.00	0.00	0.00
3 Months Ago <i>11-22-2017</i>	93.83	6.17	2.44	0.00	0.00	0.00
Start of Calendar Year <i>01-04-2018</i>	100.00	0.00	0.00	0.00	0.00	0.00
Start of Water Year <i>09-28-2017</i>	26.97	73.03	40.02	6.10	0.00	0.00
One Year Ago <i>02-23-2017</i>	91.04	8.96	1.94	0.00	0.00	0.00

Intensity:

- None
- D0 Abnormally Dry
- D1 Moderate Drought
- D2 Severe Drought
- D3 Extreme Drought
- D4 Exceptional Drought

The Drought Monitor focuses on broad-scale conditions. Local conditions may vary. For more information on the Drought Monitor, go to <https://droughtmonitor.unl.edu/About.aspx>

Author:

Deborah Bathke
 National Drought Mitigation Center

