

# U.S. Drought Monitor

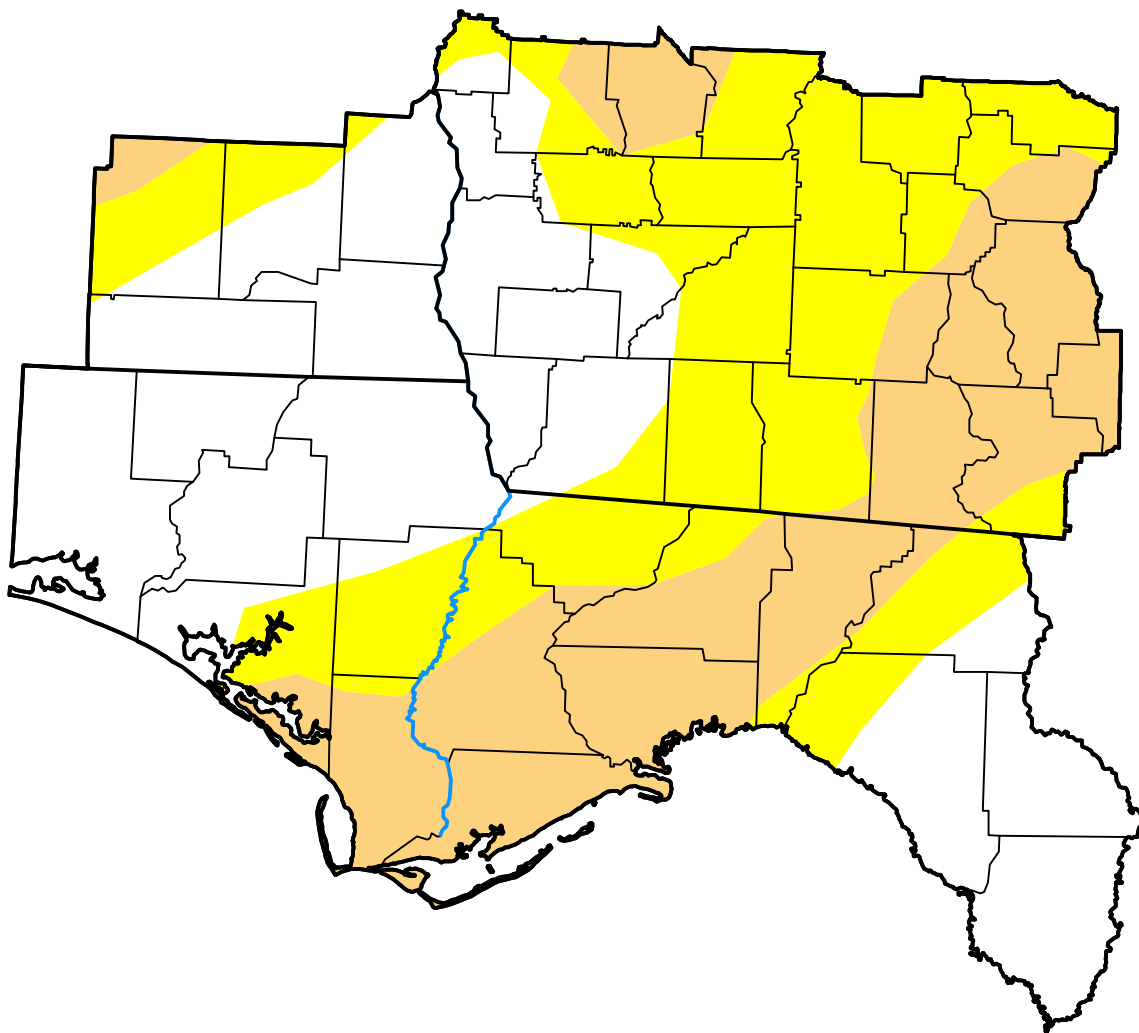
## Tallahassee, FL WFO

**February 20, 2018**  
 (Released Thursday, Feb. 22, 2018)

Valid 7 a.m. EST

Drought Conditions (Percent Area)

	None	D0-D4	D1-D4	D2-D4	D3-D4	D4
<b>Current</b>	41.35	58.65	26.77	0.00	0.00	0.00
<b>Last Week</b> <i>02-15-2018</i>	9.00	91.00	33.44	0.00	0.00	0.00
<b>3 Months Ago</b> <i>11-22-2017</i>	12.29	87.71	36.41	0.00	0.00	0.00
<b>Start of Calendar Year</b> <i>01-04-2018</i>	2.62	97.38	91.54	0.00	0.00	0.00
<b>Start of Water Year</b> <i>09-28-2017</i>	100.00	0.00	0.00	0.00	0.00	0.00
<b>One Year Ago</b> <i>02-23-2017</i>	98.77	1.23	0.00	0.00	0.00	0.00



**Intensity:**

- None
- D0 Abnormally Dry
- D1 Moderate Drought
- D2 Severe Drought
- D3 Extreme Drought
- D4 Exceptional Drought

The Drought Monitor focuses on broad-scale conditions. Local conditions may vary. For more information on the Drought Monitor, go to <https://droughtmonitor.unl.edu/About.aspx>

**Author:**

Deborah Bathke  
 National Drought Mitigation Center

