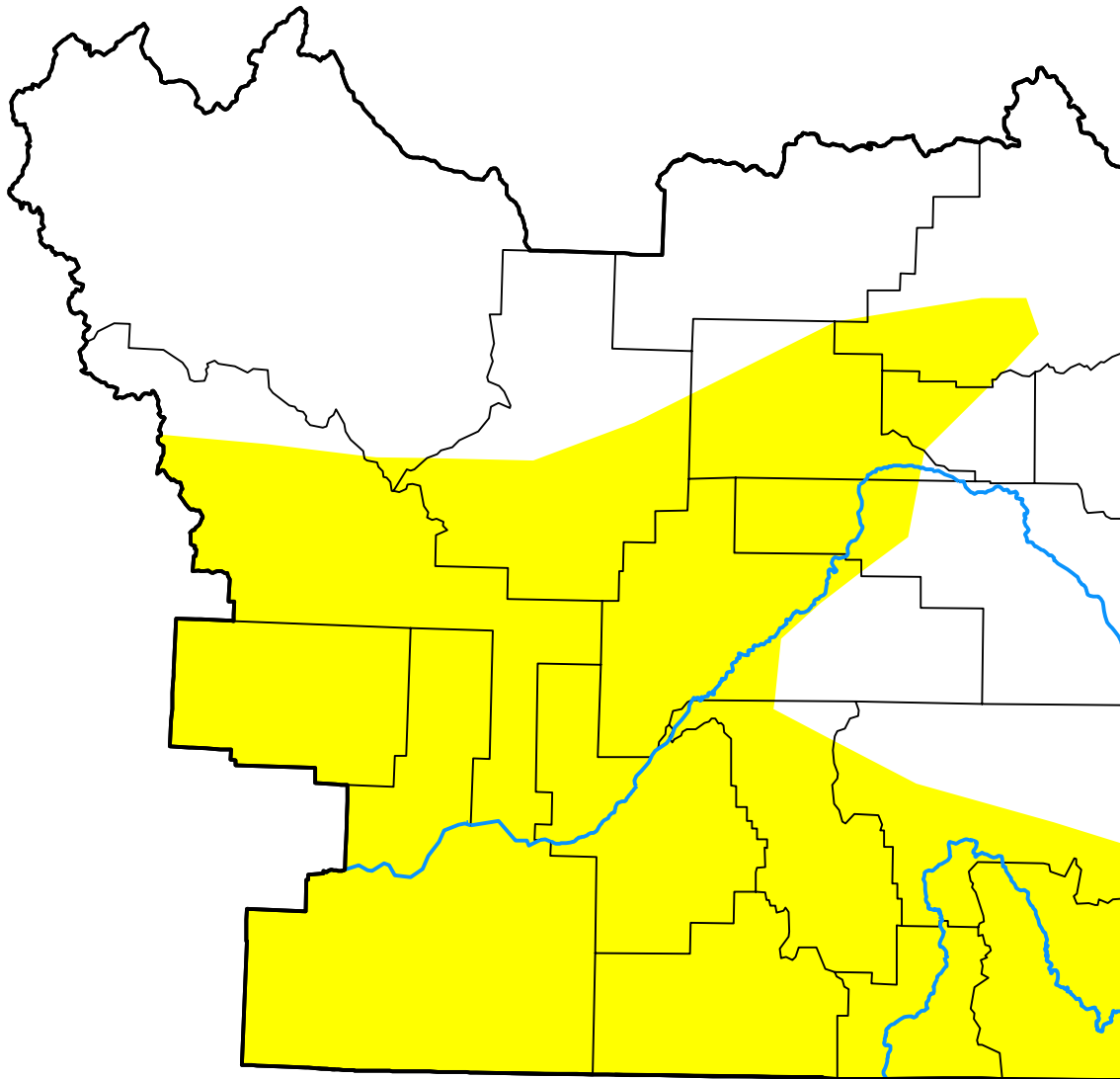


U.S. Drought Monitor

Pocatello, ID WFO

February 27, 2018
 (Released Thursday, Mar. 1, 2018)
 Valid 7 a.m. EST



Drought Conditions (Percent Area)

	None	D0	D1	D2	D3	D4
Current	44.25	55.75	0.00	0.00	0.00	0.00
Last Week <i>02-22-2018</i>	55.43	44.57	0.00	0.00	0.00	0.00
3 Months Ago <i>11-30-2017</i>	100.00	0.00	0.00	0.00	0.00	0.00
Start of Calendar Year <i>01-04-2018</i>	99.93	0.07	0.00	0.00	0.00	0.00
Start of Water Year <i>09-28-2017</i>	66.46	33.54	0.00	0.00	0.00	0.00
One Year Ago <i>03-02-2017</i>	100.00	0.00	0.00	0.00	0.00	0.00

Intensity:



The Drought Monitor focuses on broad-scale conditions. Local conditions may vary. For more information on the Drought Monitor, go to <https://droughtmonitor.unl.edu/About.aspx>

Author:

Deborah Bathke
 National Drought Mitigation Center

