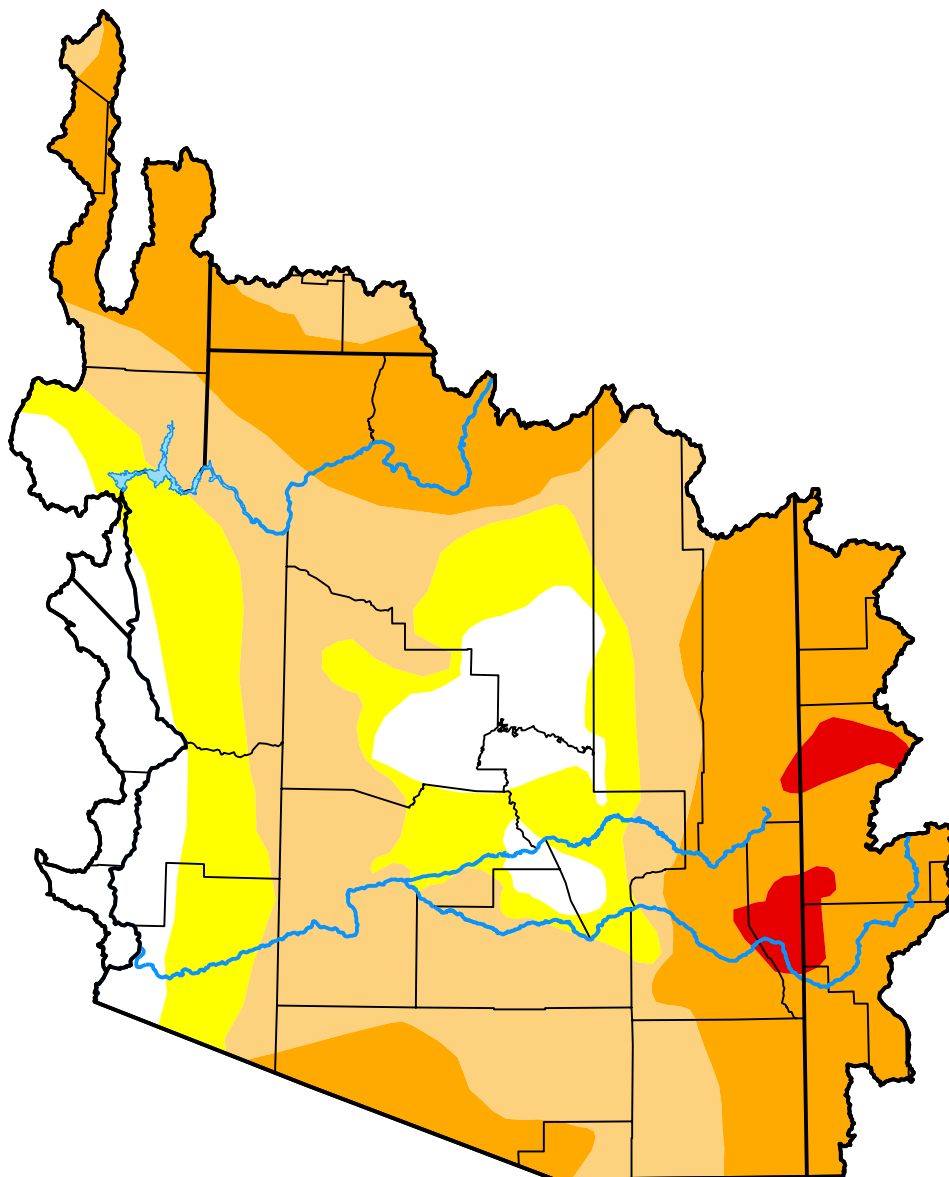


# U.S. Drought Monitor

## Lower Colorado Watershed

**December 9, 2025**  
(Released Thursday, Dec. 11, 2025)  
Valid 7 a.m. EST



### Intensity:

- None
- D0 Abnormally Dry
- D1 Moderate Drought
- D2 Severe Drought
- D3 Extreme Drought
- D4 Exceptional Drought

*The Drought Monitor focuses on broad-scale conditions. Local conditions may vary. For more information on the Drought Monitor, go to <https://droughtmonitor.unl.edu/About.aspx>*

### Author:

Lindsay Johnson  
National Drought Mitigation Center



**droughtmonitor.unl.edu**