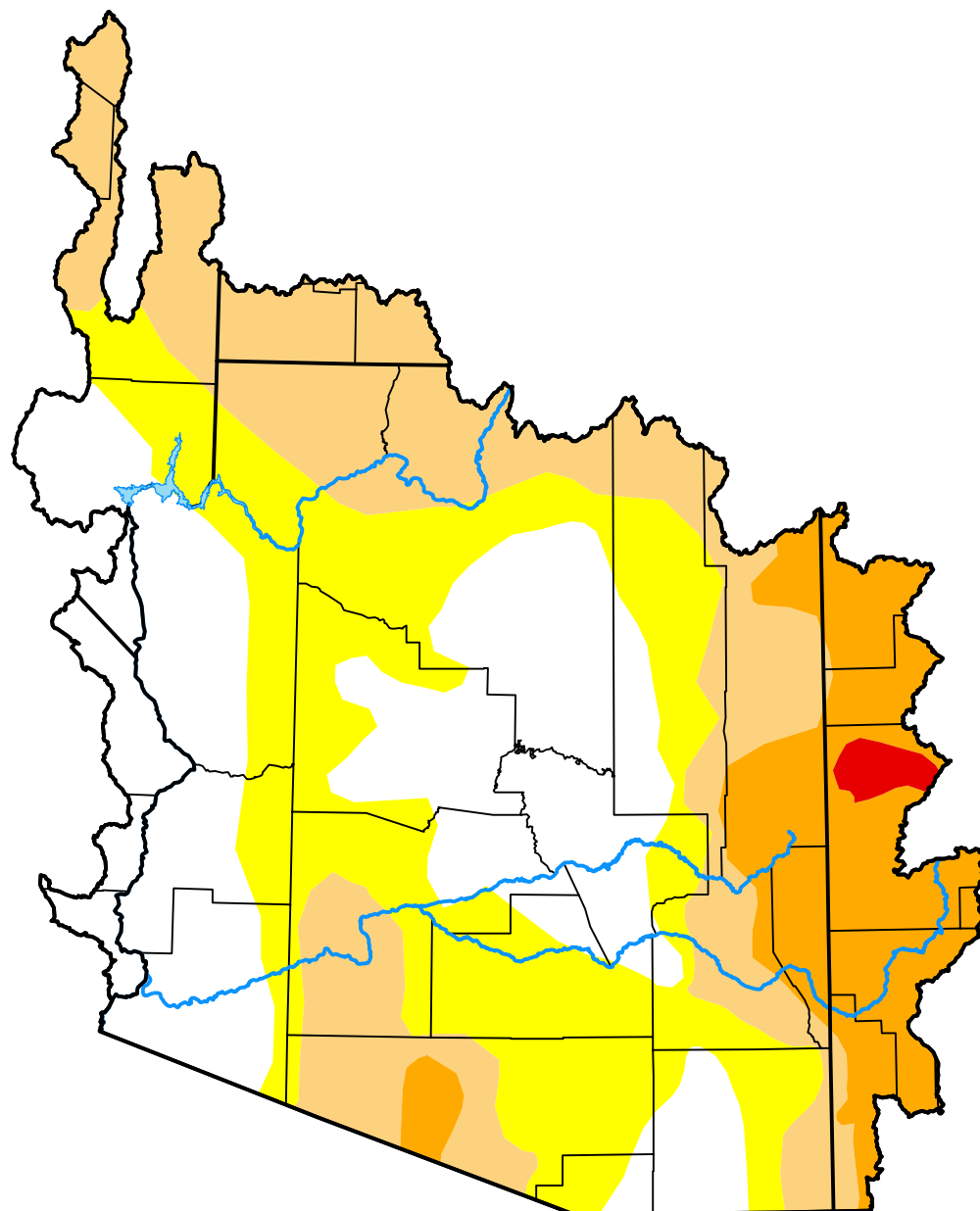


U.S. Drought Monitor

Lower Colorado Watershed

February 10, 2026
(Released Thursday, Feb. 12, 2026)
 Valid 7 a.m. EST



Drought Conditions (Percent Area)

	None	D0-D4	D1-D4	D2-D4	D3-D4	D4
Current	31.45	68.55	38.96	13.83	0.68	0.00
Last Week <i>02-03-2026</i>	31.45	68.55	38.96	13.83	0.68	0.00
3 Months Ago <i>11-11-2025</i>	0.53	99.47	95.17	66.42	15.26	0.00
Start of Calendar Year <i>01-06-2026</i>	28.09	71.91	49.80	20.48	2.03	0.00
Start of Water Year <i>09-30-2025</i>	0.00	100.00	100.00	81.74	28.83	2.92
One Year Ago <i>02-11-2025</i>	0.00	100.00	99.96	89.03	52.66	2.20

Intensity:

None	D2 Severe Drought
D0 Abnormally Dry	D3 Extreme Drought
D1 Moderate Drought	D4 Exceptional Drought

The Drought Monitor focuses on broad-scale conditions. Local conditions may vary. For more information on the Drought Monitor, go to <https://droughtmonitor.unl.edu/About.aspx>

Author:

Lindsay Johnson
 National Drought Mitigation Center



droughtmonitor.unl.edu