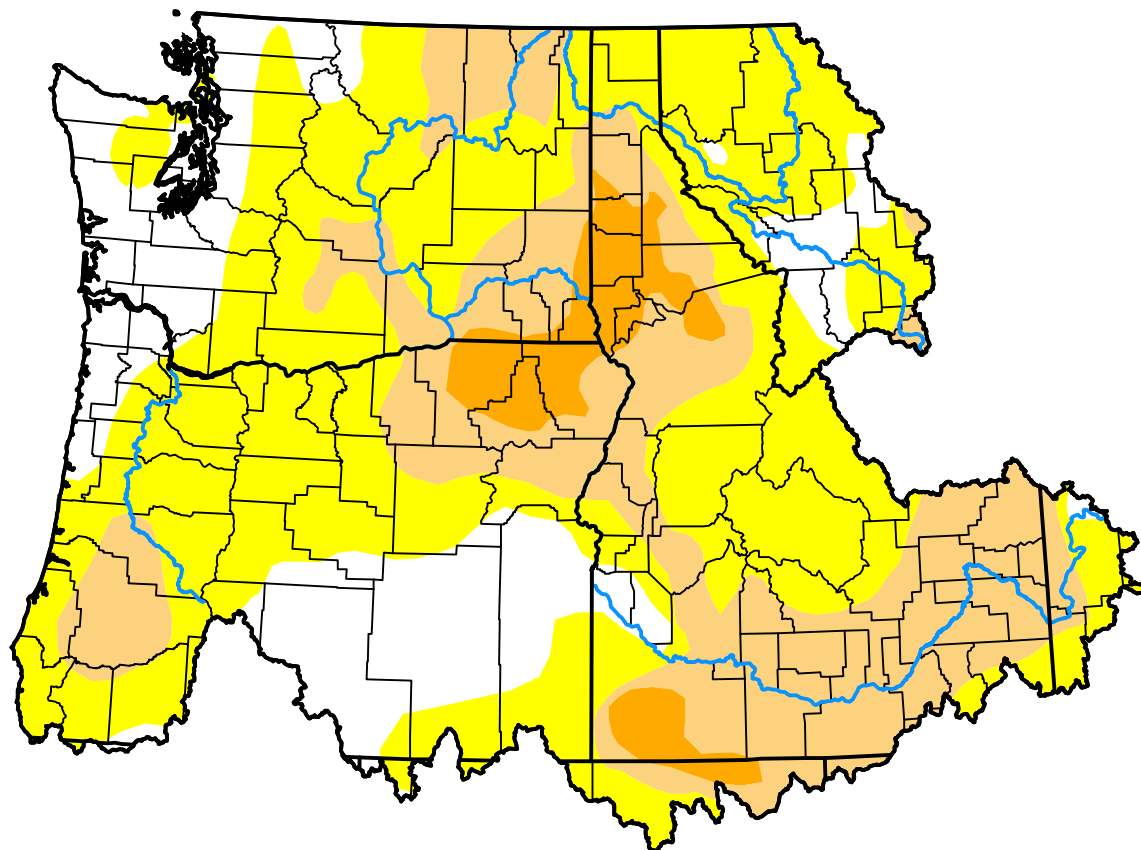


U.S. Drought Monitor

Pacific Northwest Watershed

February 10, 2026
 (Released Thursday, Feb. 12, 2026)
 Valid 7 a.m. EST



Drought Conditions (Percent Area)

	None	D0-D4	D1-D4	D2-D4	D3-D4	D4
Current	18.52	81.48	32.80	5.33	0.00	0.00
Last Week 02-03-2026	21.99	78.01	32.37	5.33	0.00	0.00
3 Months Ago 11-11-2025	18.90	81.10	66.61	30.24	5.30	0.00
Start of Calendar Year 01-06-2026	38.17	61.83	28.62	2.90	0.00	0.00
Start of Water Year 09-30-2025	10.03	89.97	80.79	53.70	15.23	1.28
One Year Ago 02-11-2025	47.68	52.32	18.47	6.00	2.27	0.00

Intensity:

None	D2 Severe Drought
D0 Abnormally Dry	D3 Extreme Drought
D1 Moderate Drought	D4 Exceptional Drought

The Drought Monitor focuses on broad-scale conditions. Local conditions may vary. For more information on the Drought Monitor, go to <https://droughtmonitor.unl.edu/About.aspx>

Author:

Lindsay Johnson
 National Drought Mitigation Center



droughtmonitor.unl.edu