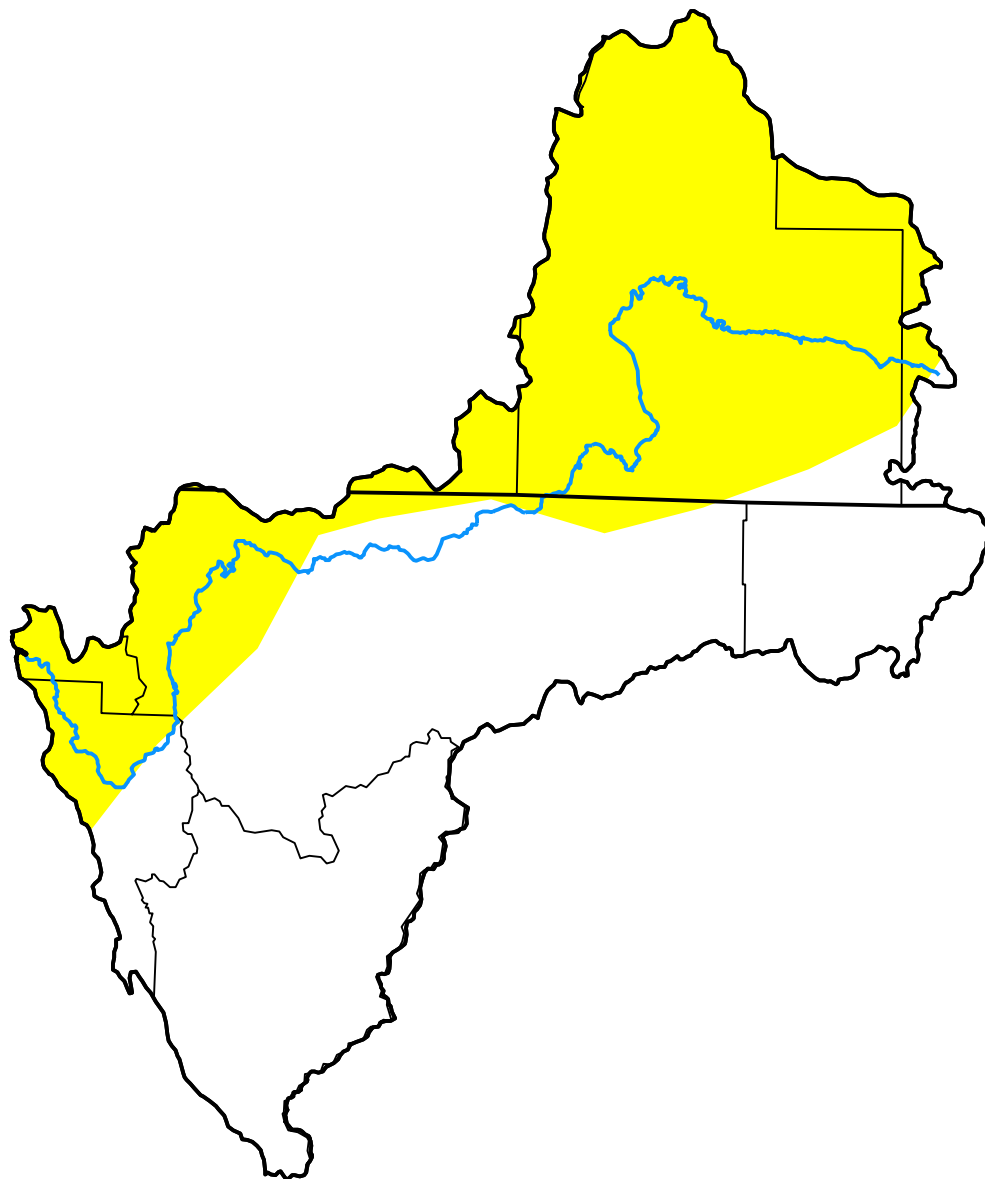


U.S. Drought Monitor Klamath River Basin

December 9, 2025
(Released Thursday, Dec. 11, 2025)
Valid 7 a.m. EST



Intensity:



The Drought Monitor focuses on broad-scale conditions. Local conditions may vary. For more information on the Drought Monitor, go to <https://droughtmonitor.unl.edu/About.aspx>

Author:

Lindsay Johnson
National Drought Mitigation Center



droughtmonitor.unl.edu