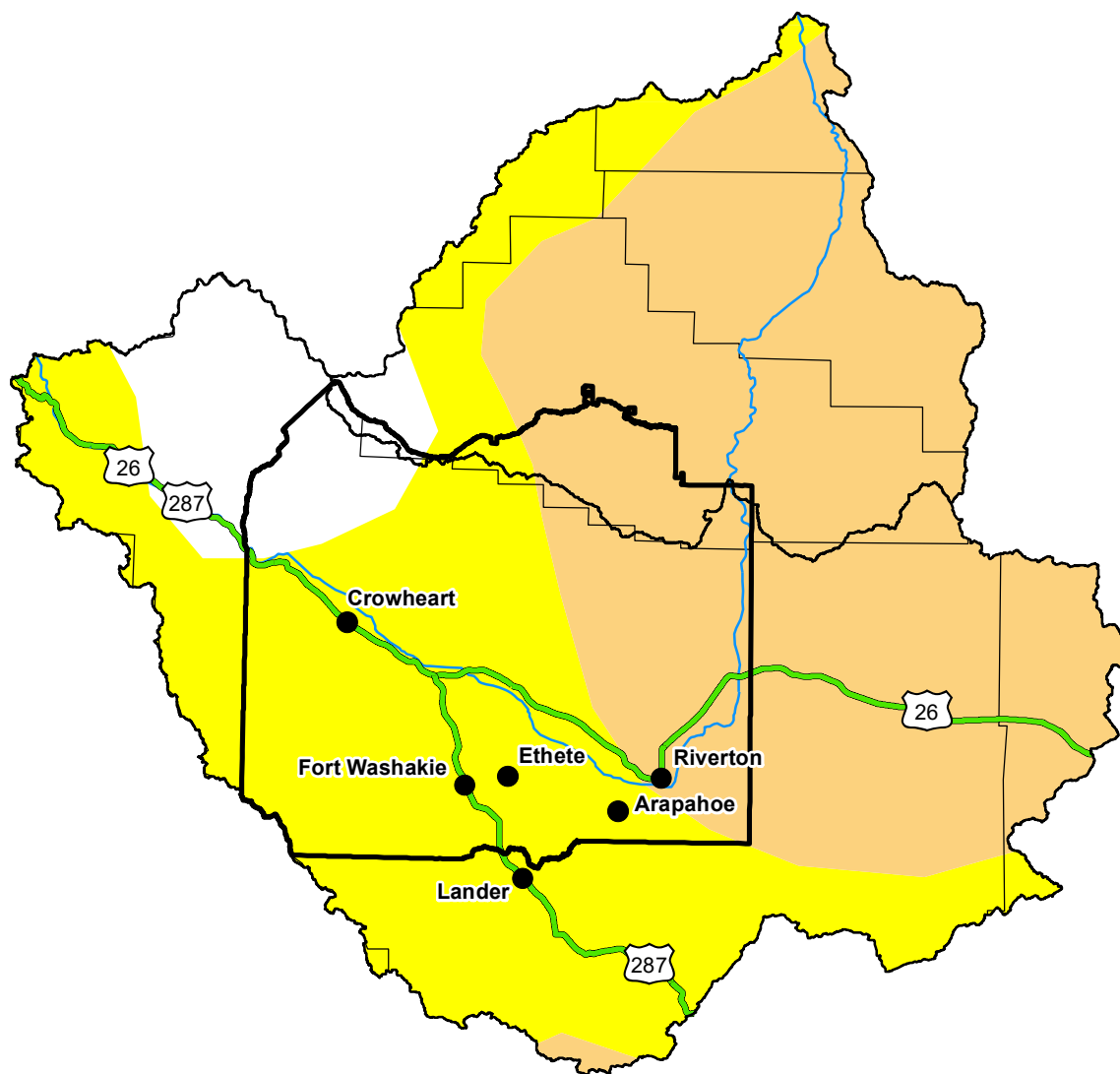


# U.S. Drought Monitor

## Wind River and Surrounding Area

**February 10, 2026**  
 (Released Thursday, Feb. 12, 2026)  
 Valid 7 a.m. EST



*Drought Conditions (Percent Area)*

	None	D0	D1	D2	D3	D4
<b>Current</b>	8.74	42.92	48.33	0.00	0.00	0.00
<b>Last Week</b> <i>02-03-2026</i>	8.74	77.50	13.76	0.00	0.00	0.00
<b>3 Months Ago</b> <i>11-11-2025</i>	18.81	61.17	18.35	1.67	0.00	0.00
<b>Start of Calendar Year</b> <i>01-06-2026</i>	48.24	51.45	0.32	0.00	0.00	0.00
<b>Start of Water Year</b> <i>09-30-2025</i>	6.67	59.79	27.89	4.27	1.37	0.00
<b>One Year Ago</b> <i>02-11-2025</i>	0.00	0.00	24.54	72.93	2.53	0.00

*Note: Statistics are for the surrounding area including the reservation.*

### Intensity:

None	D2 Severe Drought
D0 Abnormally Dry	D3 Extreme Drought
D1 Moderate Drought	D4 Exceptional Drought

*The Drought Monitor focuses on broad-scale conditions. Local conditions may vary. For more information on the Drought Monitor, go to <https://droughtmonitor.unl.edu/About.aspx>*

### Author:

Lindsay Johnson  
 National Drought Mitigation Center



**droughtmonitor.unl.edu**