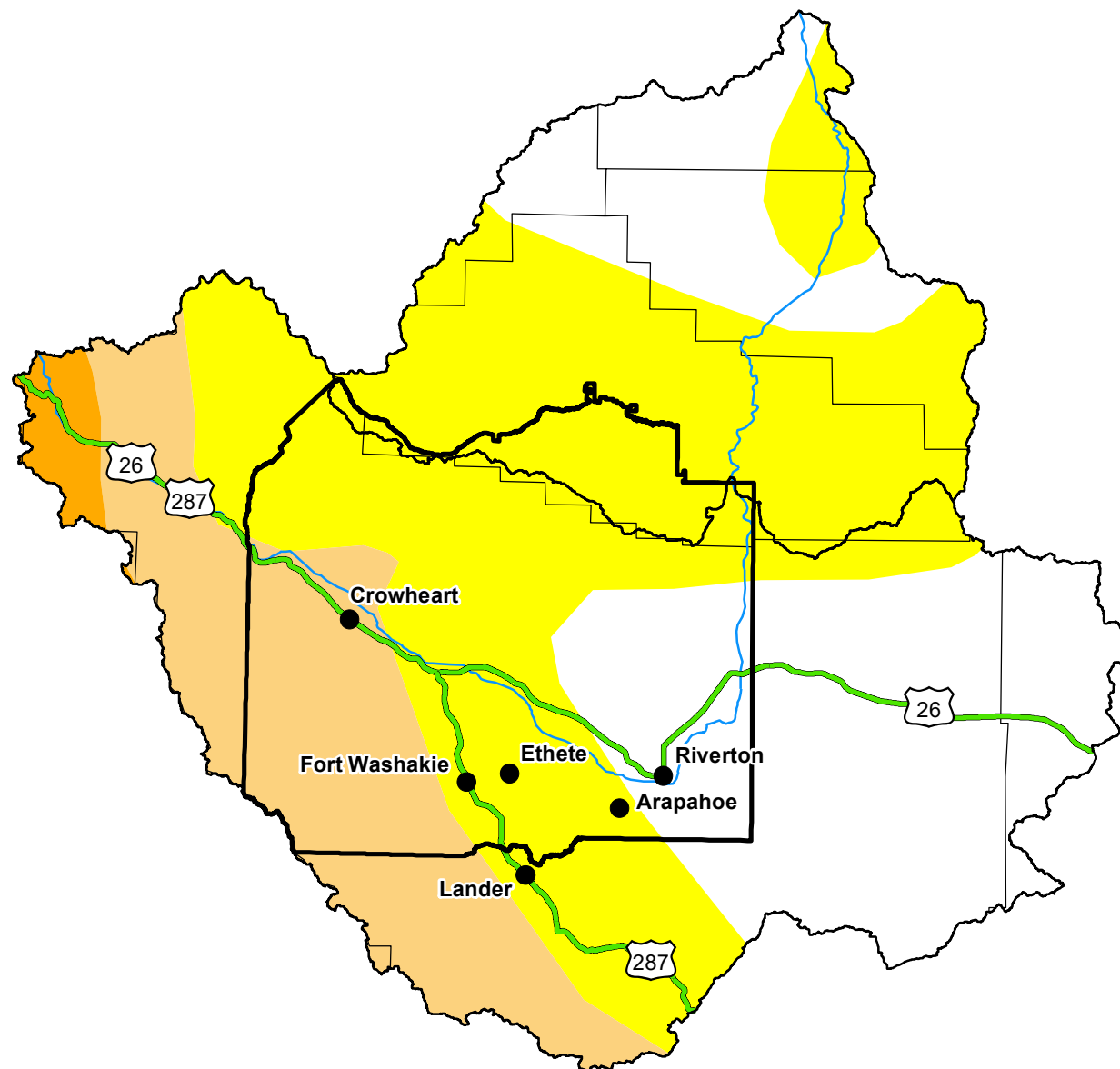


U.S. Drought Monitor

Wind River and Surrounding Area

December 9, 2025
(Released Thursday, Dec. 11, 2025)
Valid 7 a.m. EST



Intensity:

-  None
-  D0 Abnormally Dry
-  D1 Moderate Drought
-  D2 Severe Drought
-  D3 Extreme Drought
-  D4 Exceptional Drought

The Drought Monitor focuses on broad-scale conditions. Local conditions may vary. For more information on the Drought Monitor, go to <https://droughtmonitor.unl.edu/About.aspx>

Author:

Lindsay Johnson
National Drought Mitigation Center



droughtmonitor.unl.edu