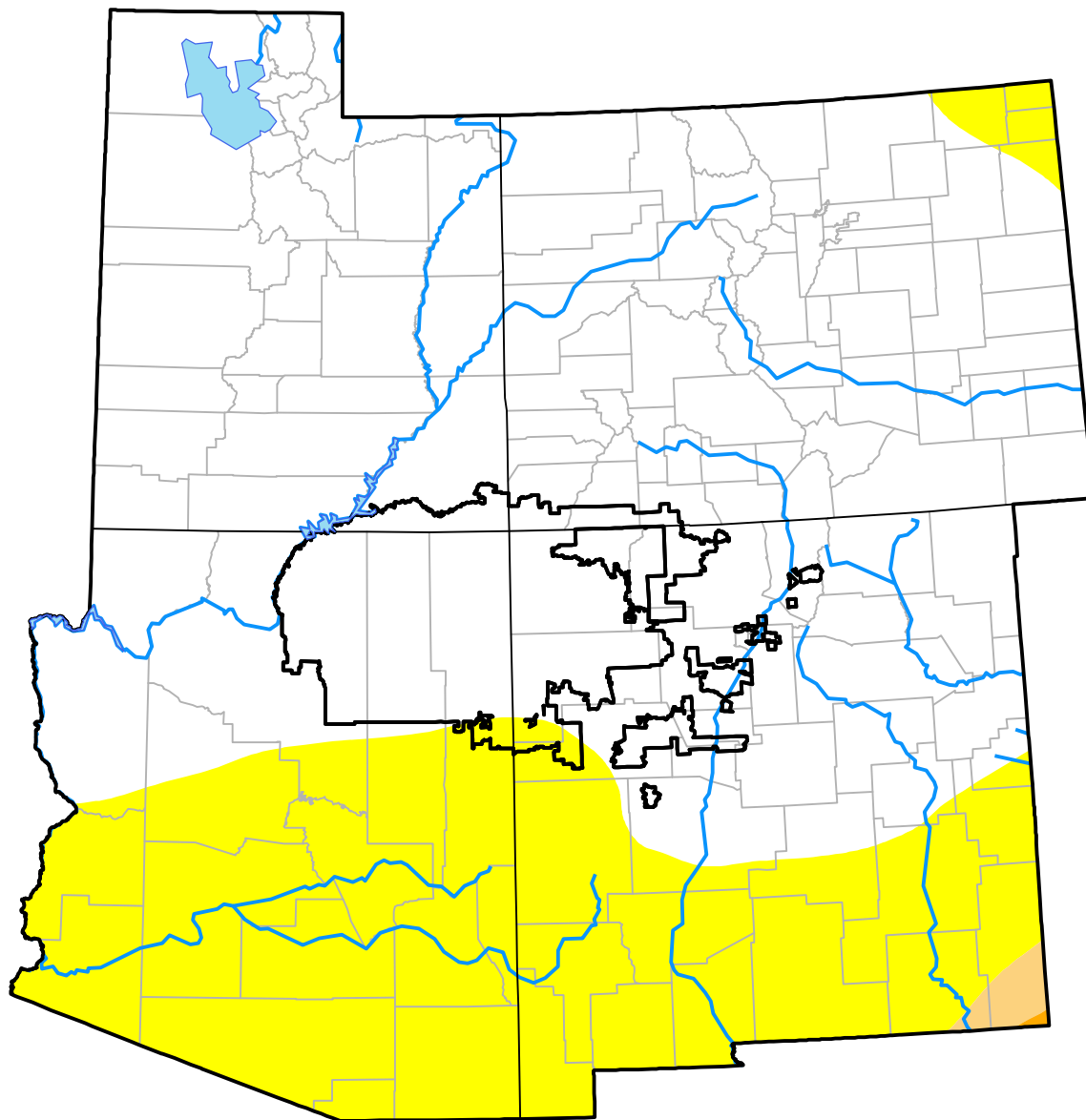


Corners RDEWS and Surrounding Areas

(Released Thursday, Jan. 6, 2000)
Valid 7 a.m. EST



Drought Conditions (Percent Area)

	None	D0-D4	D1-D4	D2-D4	D3-D4	D4
Current	69.87	30.13	0.49	0.03	0.00	0.00
Last Week	-	-	-	-	-	-
3 Months Ago	-	-	-	-	-	-
Start of Calendar Year 01-06-2000	69.87	30.13	0.49	0.03	0.00	0.00
Start of Water Year	-	-	-	-	-	-
One Year Ago	-	-	-	-	-	-

Intensity:

None	D2 Severe Drought
D0 Abnormally Dry	D3 Extreme Drought
D1 Moderate Drought	D4 Exceptional Drought

The Drought Monitor focuses on broad-scale conditions. Local conditions may vary. For more information on the Drought Monitor, go to <https://droughtmonitor.unl.edu/About.aspx>

Author:

Staff None
National Drought Mitigation Center

