

U.S. Drought Monitor

Missouri River Basin RDEWS

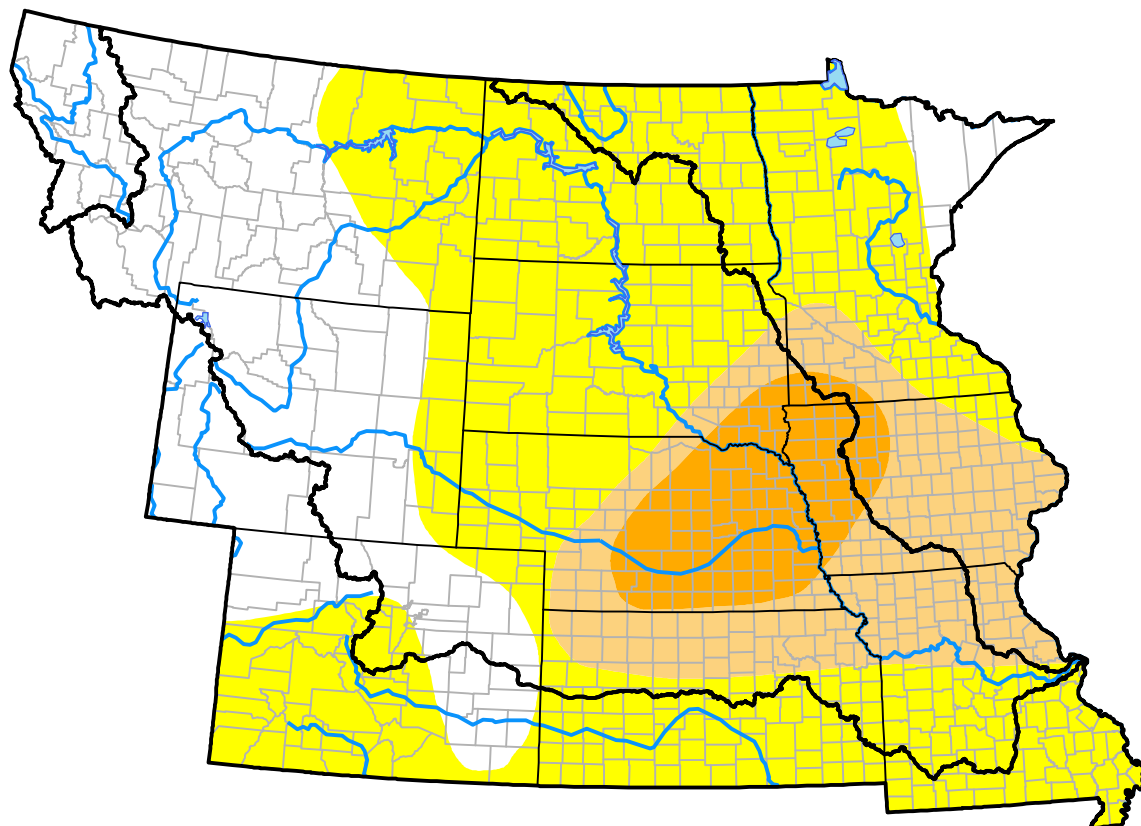
January 25, 2000

(Released Thursday, Jan. 27, 2000)

Valid 7 a.m. EST

Drought Conditions (Percent Area)

	None	D0	D1	D2	D3	D4
Current	30.97	44.25	13.93	10.85	0.00	0.00
Last Week <i>01-20-2000</i>	43.10	32.60	13.45	10.85	0.00	0.00
3 Months Ago	-	-	-	-	-	-
Start of Calendar Year <i>01-06-2000</i>	48.60	35.31	7.72	8.38	0.00	0.00
Start of Water Year	-	-	-	-	-	-
One Year Ago	-	-	-	-	-	-



Intensity:

None	D2 Severe Drought
D0 Abnormally Dry	D3 Extreme Drought
D1 Moderate Drought	D4 Exceptional Drought

The Drought Monitor focuses on broad-scale conditions. Local conditions may vary. For more information on the Drought Monitor, go to <https://droughtmonitor.unl.edu/About.aspx>

Author:

Staff None
National Drought Mitigation Center



droughtmonitor.unl.edu