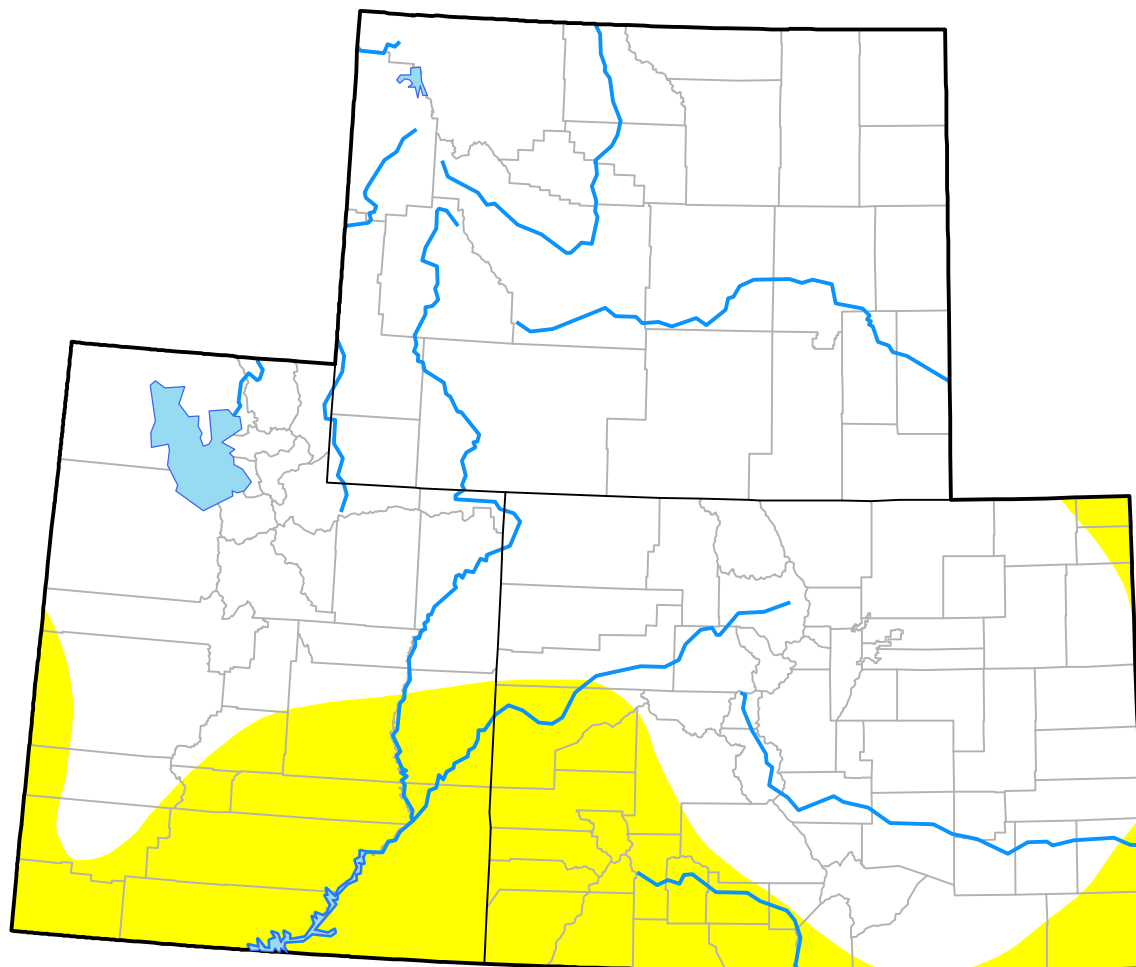


Drought Conditions (Percent Area)

	None	D0-D4	D1-D4	D2-D4	D3-D4	D4
<b>Current</b>	78.59	21.41	0.03	0.00	0.00	0.00
<b>Last Week</b> 02-03-2000	72.19	27.81	0.03	0.00	0.00	0.00
<b>3 Months Ago</b>	-	-	-	-	-	-
<b>Start of Calendar Year</b> 01-06-2000	98.84	1.16	0.00	0.00	0.00	0.00
<b>Start of Water Year</b>	-	-	-	-	-	-
<b>One Year Ago</b>	-	-	-	-	-	-



Intensity:

None	D2 Severe Drought
D0 Abnormally Dry	D3 Extreme Drought
D1 Moderate Drought	D4 Exceptional Drought

The Drought Monitor focuses on broad-scale conditions. Local conditions may vary. For more information on the Drought Monitor, go to <https://droughtmonitor.unl.edu/About.aspx>

Author:

Staff None  
National Drought Mitigation Center

