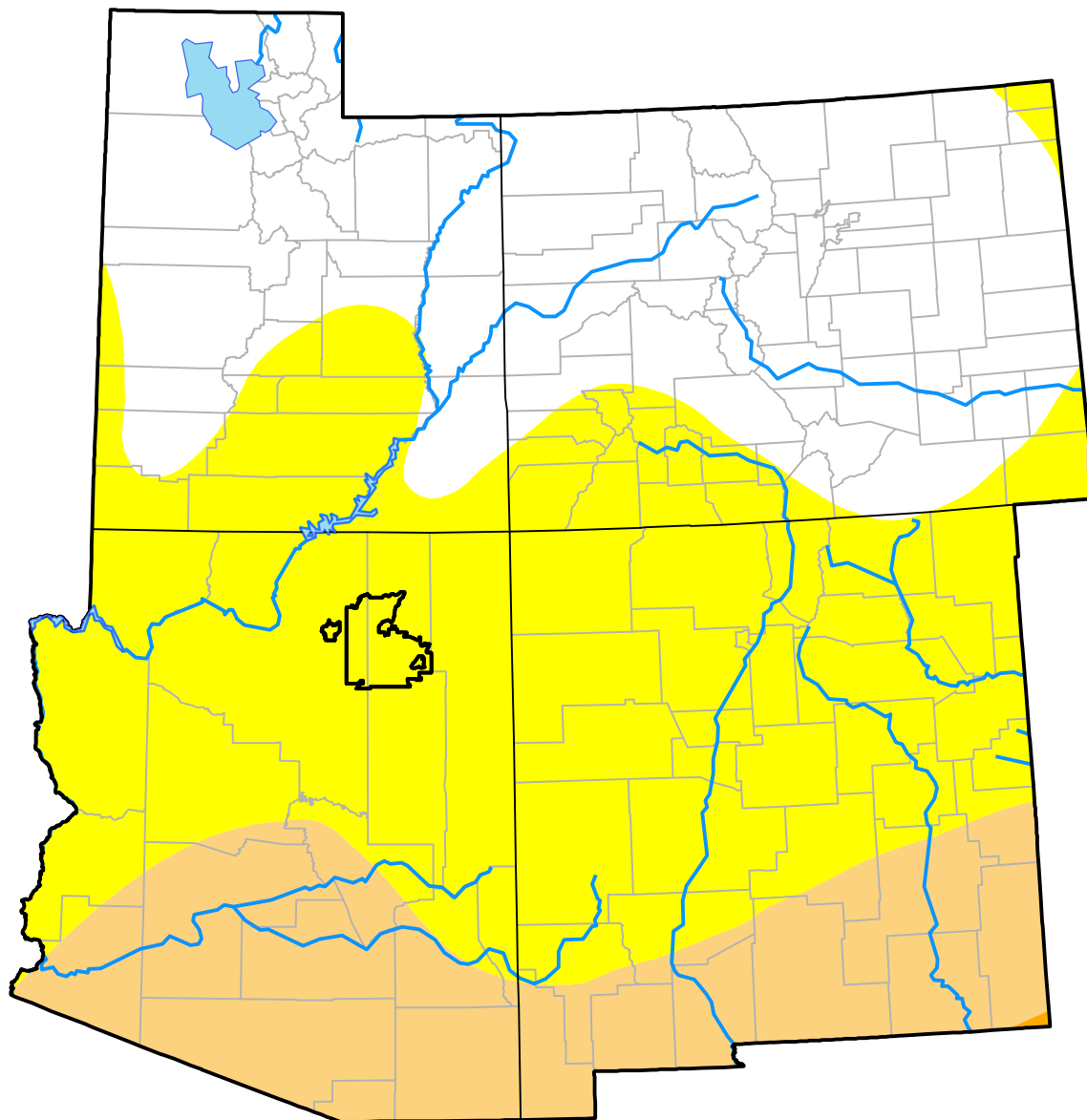


# Nebraska RDEWS and Surrounding Areas



Drought Conditions (Percent Area)

	None	D0-D4	D1-D4	D2-D4	D3-D4	D4
<b>Current</b>	34.11	65.89	18.51	0.03	0.00	0.00
<b>Last Week</b> 02-10-2000	30.08	69.92	2.66	0.03	0.00	0.00
<b>3 Months Ago</b>	-	-	-	-	-	-
<b>Start of Calendar Year</b> 01-06-2000	69.87	30.13	0.49	0.03	0.00	0.00
<b>Start of Water Year</b>	-	-	-	-	-	-
<b>One Year Ago</b>	-	-	-	-	-	-

## Intensity:

None	D2 Severe Drought
D0 Abnormally Dry	D3 Extreme Drought
D1 Moderate Drought	D4 Exceptional Drought

The Drought Monitor focuses on broad-scale conditions. Local conditions may vary. For more information on the Drought Monitor, go to <https://droughtmonitor.unl.edu/About.aspx>

## Author:

Staff None  
National Drought Mitigation Center

