

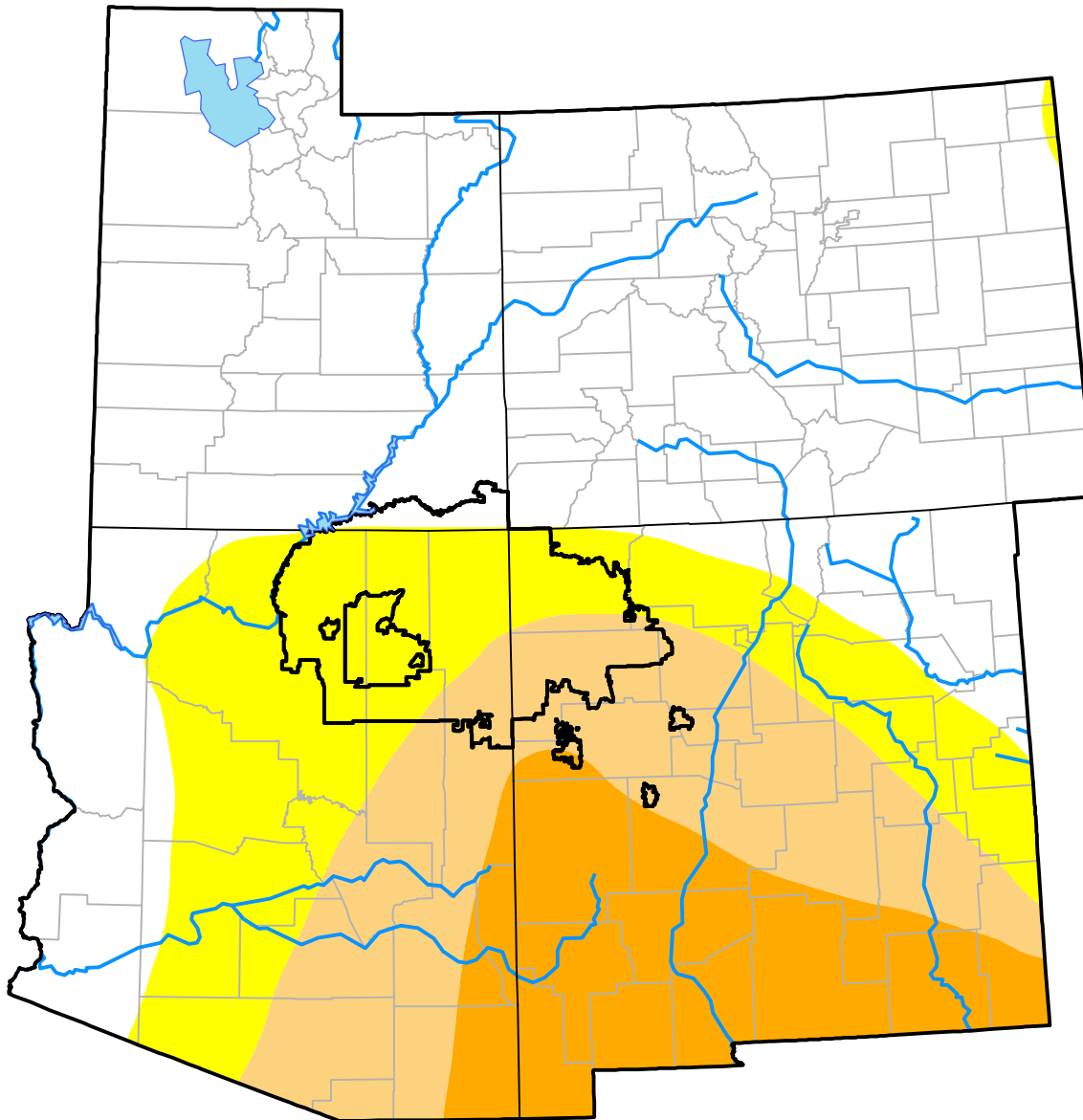
U.S. Drought Monitor

Navajo RDEWS

May 16, 2000
 (Released Thursday, May. 18, 2000)
 Valid 8 a.m. EDT

Drought Conditions (Percent Area)

	None	D0	D1	D2	D3	D4
Current	6.51	64.44	28.64	0.41	0.00	0.00
Last Week <i>05-11-2000</i>	72.81	27.19	0.00	0.00	0.00	0.00
3 Months Ago <i>02-17-2000</i>	0.00	100.00	0.00	0.00	0.00	0.00
Start of Calendar Year <i>01-06-2000</i>	97.21	2.79	0.00	0.00	0.00	0.00
Start of Water Year	-	-	-	-	-	-
One Year Ago	-	-	-	-	-	-



Intensity:

- None
- D0 Abnormally Dry
- D1 Moderate Drought
- D2 Severe Drought
- D3 Extreme Drought
- D4 Exceptional Drought

The Drought Monitor focuses on broad-scale conditions. Local conditions may vary. For more information on the Drought Monitor, go to <https://droughtmonitor.unl.edu/About.aspx>

Author:

Staff None
 National Drought Mitigation Center

