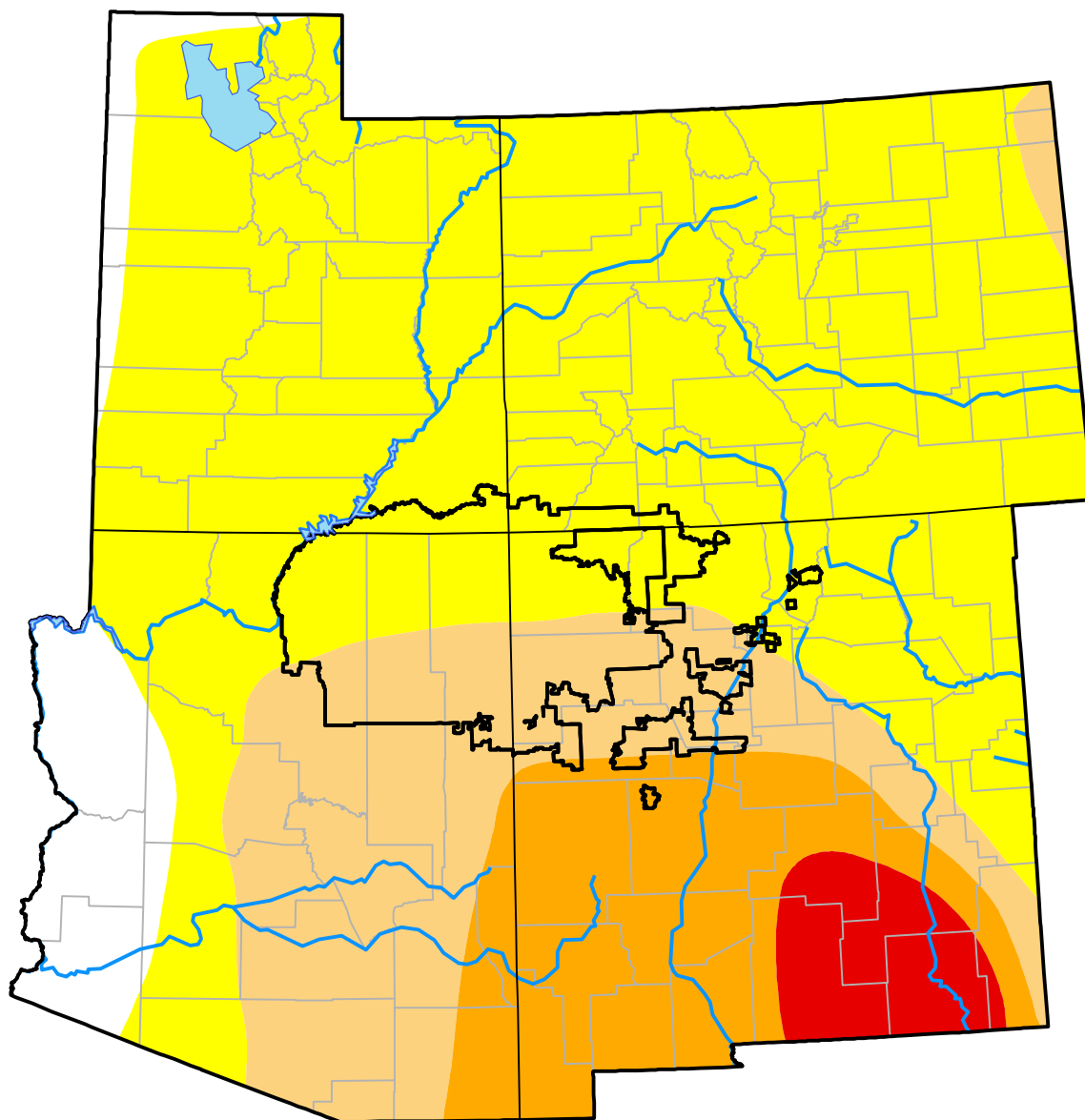


Southwest Corners RDEWS and Surrounding Areas

(Released Thursday, Jun. 22, 2000)
Valid 8 a.m. EDT

Drought Conditions (Percent Area)

	None	D0-D4	D1-D4	D2-D4	D3-D4	D4
Current	6.07	93.93	34.14	15.86	3.50	0.00
Last Week <i>06-15-2000</i>	20.43	79.57	33.73	16.30	3.75	0.00
3 Months Ago <i>03-23-2000</i>	61.60	38.40	16.70	4.05	0.00	0.00
Start of Calendar Year <i>01-06-2000</i>	69.87	30.13	0.49	0.03	0.00	0.00
Start of Water Year	-	-	-	-	-	-
One Year Ago	-	-	-	-	-	-



Intensity:

None	D2 Severe Drought
D0 Abnormally Dry	D3 Extreme Drought
D1 Moderate Drought	D4 Exceptional Drought

The Drought Monitor focuses on broad-scale conditions. Local conditions may vary. For more information on the Drought Monitor, go to <https://droughtmonitor.unl.edu/About.aspx>

Author:

Staff None
National Drought Mitigation Center

