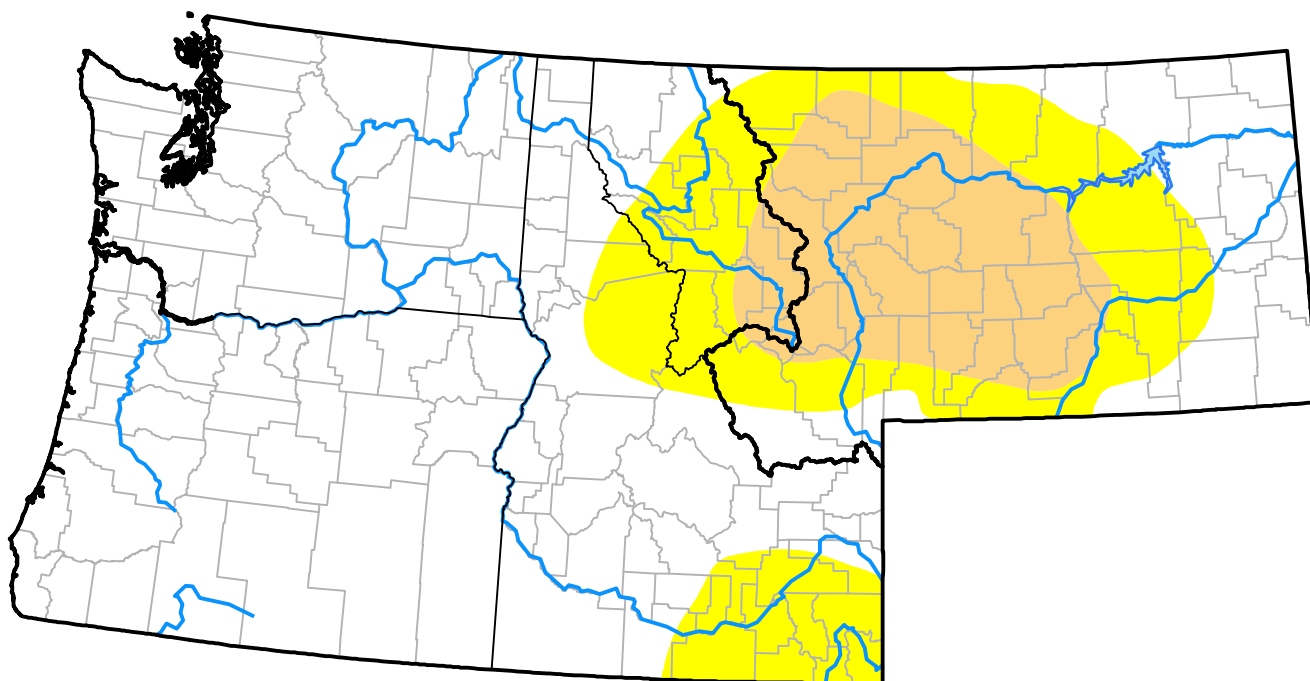


# U.S. Drought Monitor

## Pacific Northwest RDEWS

**June 27, 2000**  
(Released Thursday, Jun. 29, 2000)  
Valid 8 a.m. EDT



### Intensity:

-  None
-  D0 Abnormally Dry
-  D1 Moderate Drought
-  D2 Severe Drought
-  D3 Extreme Drought
-  D4 Exceptional Drought

*The Drought Monitor focuses on broad-scale conditions. Local conditions may vary. For more information on the Drought Monitor, go to <https://droughtmonitor.unl.edu/About.aspx>*

### Author:

Staff None  
National Drought Mitigation Center



**droughtmonitor.unl.edu**