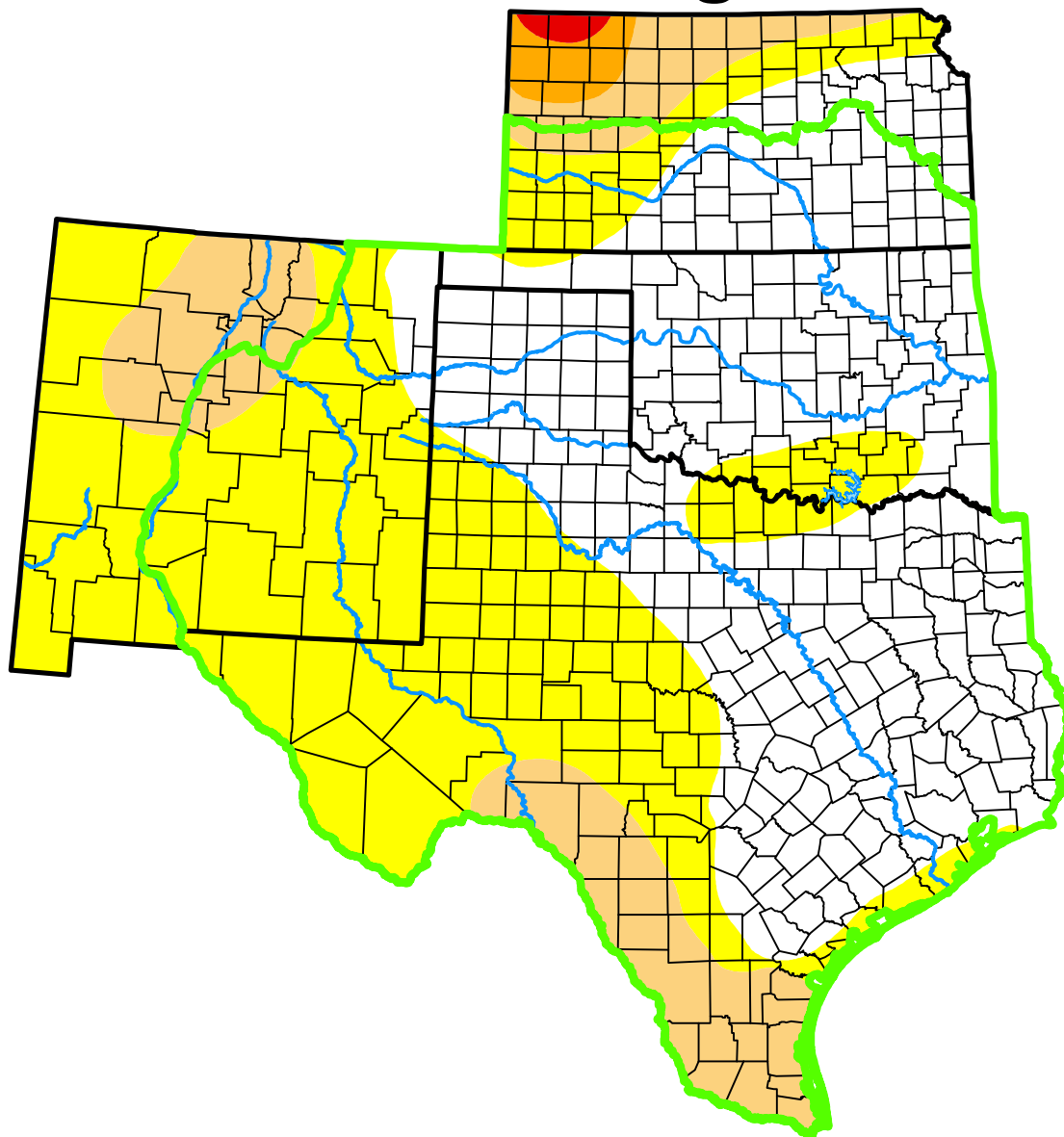


# U.S. Drought Monitor

## Southern Plains DEWS

### and Surrounding Areas



**July 4, 2000**

(Released Thursday, Jul. 6, 2000)

Valid 8 a.m. EDT

*Drought Conditions (Percent Area)*

	None	D0	D1	D2	D3	D4
<b>Current</b>	51.94	39.33	8.73	0.00	0.00	0.00
<b>Last Week</b> <i>06-27-2000</i>	47.74	20.39	17.87	14.00	0.00	0.00
<b>3 Months Ago</b> <i>04-04-2000</i>	33.27	18.25	13.81	34.66	0.00	0.00
<b>Start of Calendar Year</b> <i>01-04-2000</i>	27.29	27.82	13.81	31.08	0.00	0.00
<b>Start of Water Year</b> <i>01-01-1900</i>	-	-	-	-	-	-
<b>One Year Ago</b> <i>01-01-1900</i>	-	-	-	-	-	-

(Statistics for area highlighted in green)

#### Intensity:

None	D2 Severe Drought
D0 Abnormally Dry	D3 Extreme Drought
D1 Moderate Drought	D4 Exceptional Drought

The Drought Monitor focuses on broad-scale conditions. Local conditions may vary. For more information on the Drought Monitor, go to <https://droughtmonitor.unl.edu/About.aspx>

#### Author:

Staff None

National Drought Mitigation Center



[droughtmonitor.unl.edu](https://droughtmonitor.unl.edu)