

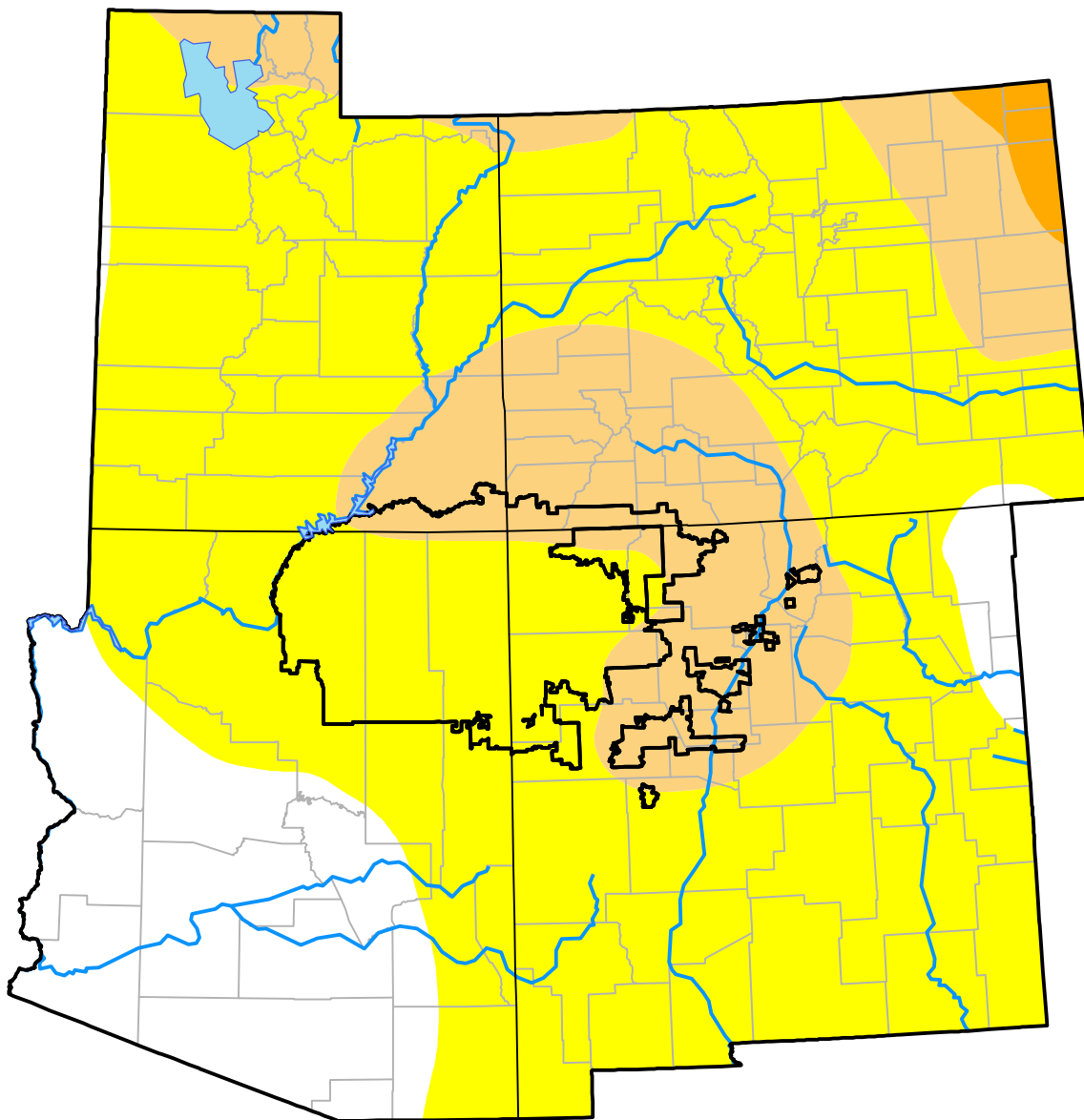
Corners RDEWS and Surrounding Areas

(Released Thursday, Jul. 13, 2000)

Valid 8 a.m. EDT

Drought Conditions (Percent Area)

	None	D0-D4	D1-D4	D2-D4	D3-D4	D4
Current	15.11	84.89	19.29	0.81	0.01	0.00
Last Week <i>07-06-2000</i>	15.16	84.84	9.70	0.85	0.01	0.00
3 Months Ago <i>04-13-2000</i>	70.54	29.46	15.17	4.54	0.00	0.00
Start of Calendar Year <i>01-06-2000</i>	69.87	30.13	0.49	0.03	0.00	0.00
Start of Water Year	-	-	-	-	-	-
One Year Ago	-	-	-	-	-	-



Intensity:

- None
- D0 Abnormally Dry
- D1 Moderate Drought
- D2 Severe Drought
- D3 Extreme Drought
- D4 Exceptional Drought

The Drought Monitor focuses on broad-scale conditions. Local conditions may vary. For more information on the Drought Monitor, go to <https://droughtmonitor.unl.edu/About.aspx>

Author:

Staff None
National Drought Mitigation Center

