

U.S. Drought Monitor

Pacific Northwest RDEWS

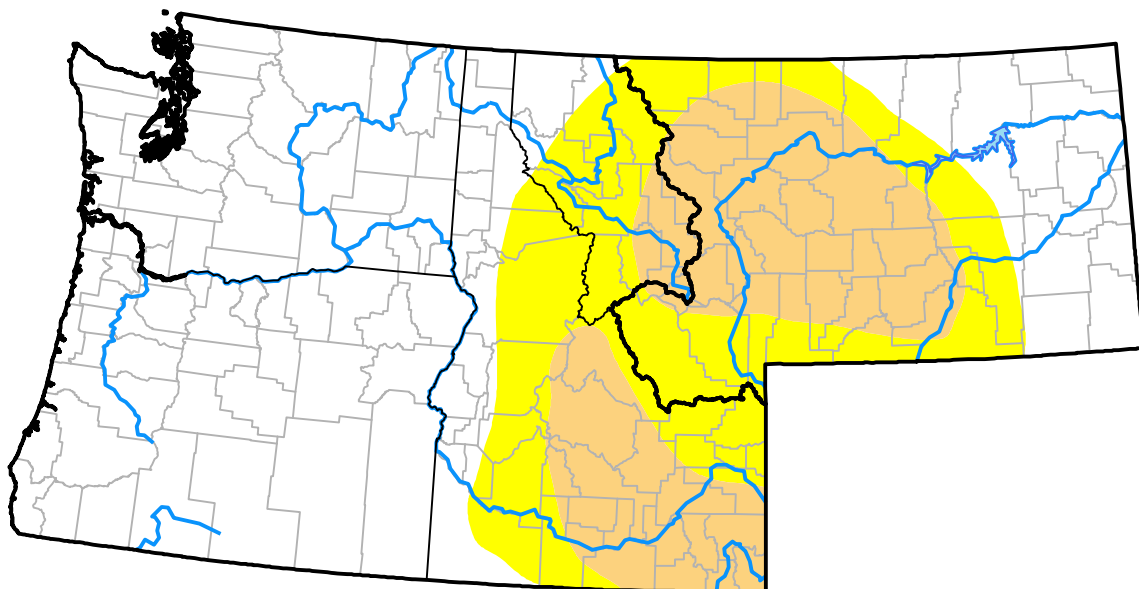
July 11, 2000

(Released Thursday, Jul. 13, 2000)

Valid 8 a.m. EDT

Drought Conditions (Percent Area)

	None	D0-D4	D1-D4	D2-D4	D3-D4	D4
Current	70.55	29.45	12.50	0.00	0.00	0.00
Last Week 07-06-2000	70.63	29.37	4.97	0.00	0.00	0.00
3 Months Ago 04-13-2000	97.37	2.63	0.00	0.00	0.00	0.00
Start of Calendar Year 01-06-2000	99.41	0.59	0.00	0.00	0.00	0.00
Start of Water Year	-	-	-	-	-	-
One Year Ago	-	-	-	-	-	-



Intensity:

None	D2 Severe Drought
D0 Abnormally Dry	D3 Extreme Drought
D1 Moderate Drought	D4 Exceptional Drought

The Drought Monitor focuses on broad-scale conditions. Local conditions may vary. For more information on the Drought Monitor, go to <https://droughtmonitor.unl.edu/About.aspx>

Author:

Staff None
National Drought Mitigation Center



droughtmonitor.unl.edu