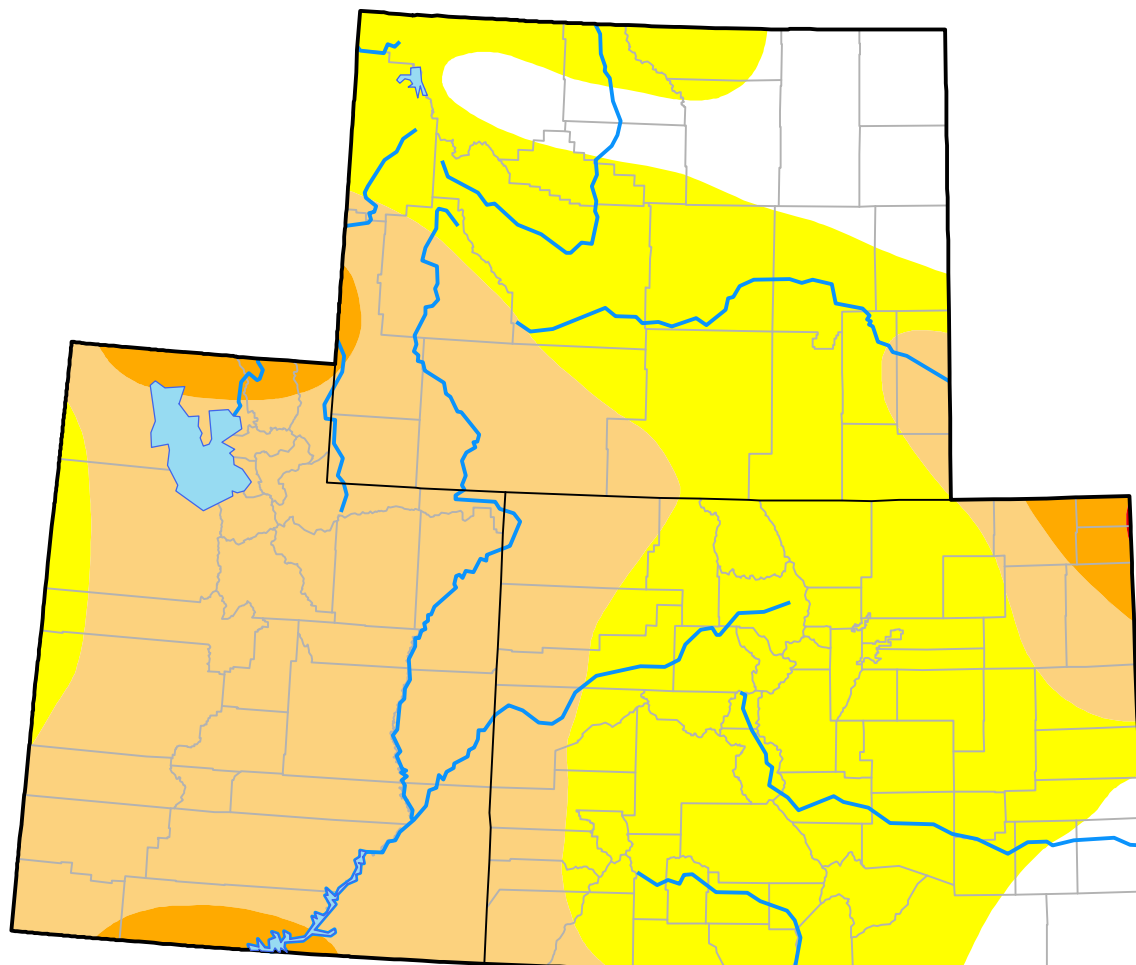


Drought Conditions (Percent Area)

	None	D0-D4	D1-D4	D2-D4	D3-D4	D4
Current	10.15	89.85	45.18	3.01	0.02	0.00
Last Week <i>08-10-2000</i>	10.60	89.40	31.32	0.86	0.00	0.00
3 Months Ago <i>05-18-2000</i>	88.27	11.73	0.00	0.00	0.00	0.00
Start of Calendar Year <i>01-06-2000</i>	98.84	1.16	0.00	0.00	0.00	0.00
Start of Water Year	-	-	-	-	-	-
One Year Ago	-	-	-	-	-	-



Intensity:

None	D2 Severe Drought
D0 Abnormally Dry	D3 Extreme Drought
D1 Moderate Drought	D4 Exceptional Drought

The Drought Monitor focuses on broad-scale conditions. Local conditions may vary. For more information on the Drought Monitor, go to <https://droughtmonitor.unl.edu/About.aspx>

Author:

Staff None
National Drought Mitigation Center

