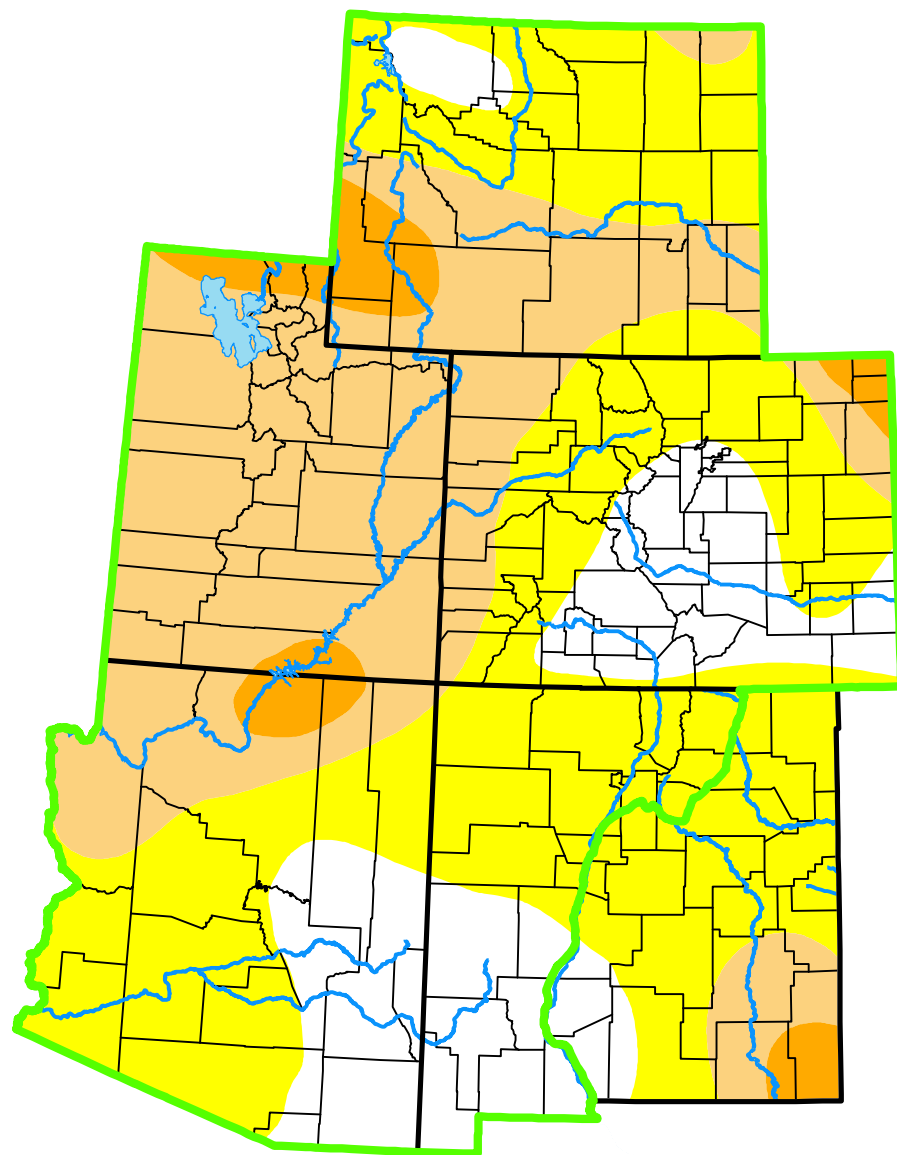


U.S. Drought Monitor

Intermountain West DEWS and Surrounding Areas



August 29, 2000

(Released Thursday, Aug. 31, 2000)

Valid 8 a.m. EDT

Drought Conditions (Percent Area)

	None	D0	D1	D2	D3	D4
Current	19.95	40.76	34.81	4.47	0.01	0.00
Last Week <i>08-22-2000</i>	25.98	36.24	33.77	4.00	0.01	0.00
3 Months Ago <i>05-30-2000</i>	66.28	14.87	11.43	7.42	0.00	0.00
Start of Calendar Year <i>01-04-2000</i>	78.99	21.01	0.00	0.00	0.00	0.00
Start of Water Year <i>01-01-1900</i>	-	-	-	-	-	-
One Year Ago <i>01-01-1900</i>	-	-	-	-	-	-

(Statistics for area highlighted in green)

Intensity:

None	D2 Severe Drought
D0 Abnormally Dry	D3 Extreme Drought
D1 Moderate Drought	D4 Exceptional Drought

The Drought Monitor focuses on broad-scale conditions. Local conditions may vary. For more information on the Drought Monitor, go to <https://droughtmonitor.unl.edu/About.aspx>

Author:

Staff None
National Drought Mitigation Center



droughtmonitor.unl.edu