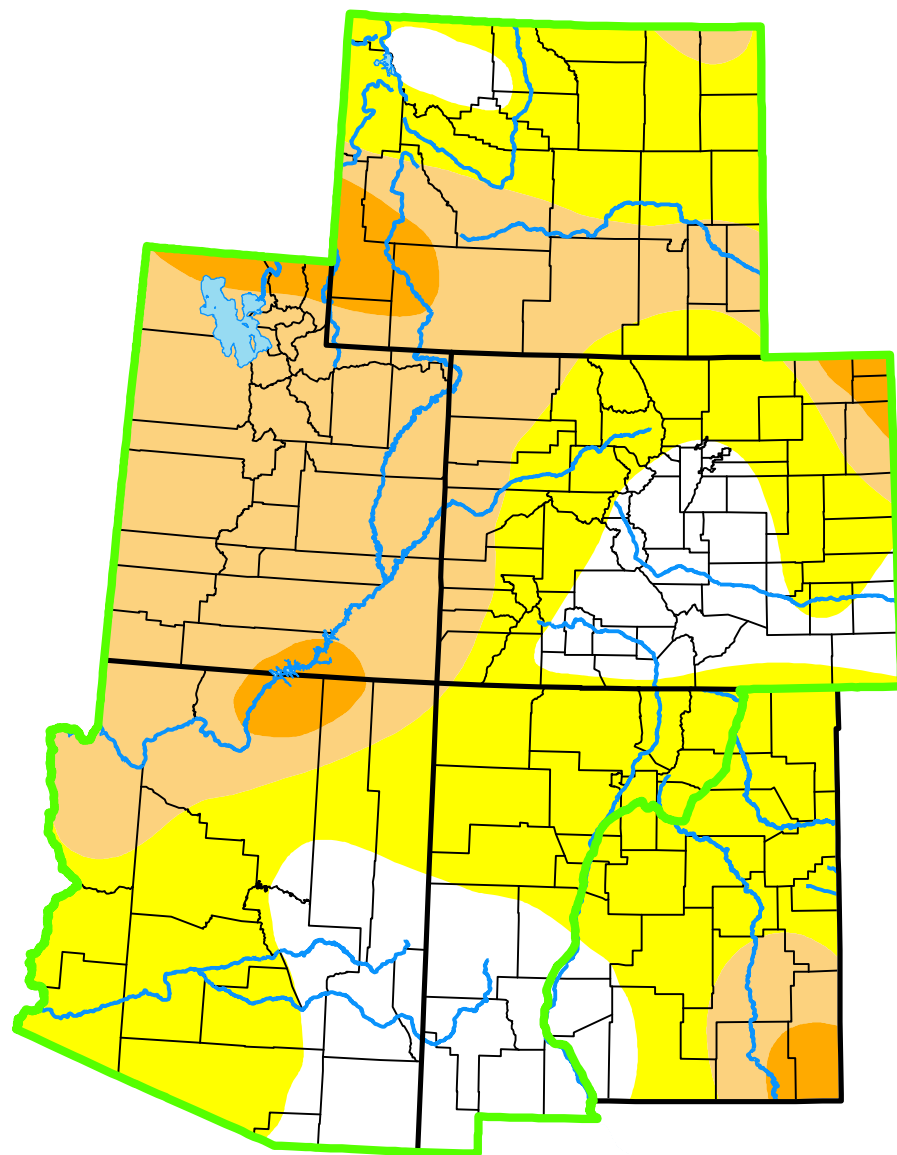


U.S. Drought Monitor

Intermountain West DEWS and Surrounding Areas



August 29, 2000

(Released Thursday, Aug. 31, 2000)

Valid 8 a.m. EDT

Drought Conditions (Percent Area)

	None	D0-D4	D1-D4	D2-D4	D3-D4	D4
Current	19.95	80.05	39.28	4.48	0.01	0.00
Last Week <i>08-22-2000</i>	25.98	74.02	37.78	4.01	0.01	0.00
3 Months Ago <i>05-30-2000</i>	66.28	33.72	18.85	7.42	0.00	0.00
Start of Calendar Year <i>01-04-2000</i>	78.99	21.01	0.00	0.00	0.00	0.00
Start of Water Year <i>01-01-1900</i>	-	-	-	-	-	-
One Year Ago <i>01-01-1900</i>	-	-	-	-	-	-

(Statistics for area highlighted in green)

Intensity:

None	D2 Severe Drought
D0 Abnormally Dry	D3 Extreme Drought
D1 Moderate Drought	D4 Exceptional Drought

The Drought Monitor focuses on broad-scale conditions. Local conditions may vary. For more information on the Drought Monitor, go to <https://droughtmonitor.unl.edu/About.aspx>

Author:

Staff None
National Drought Mitigation Center



droughtmonitor.unl.edu