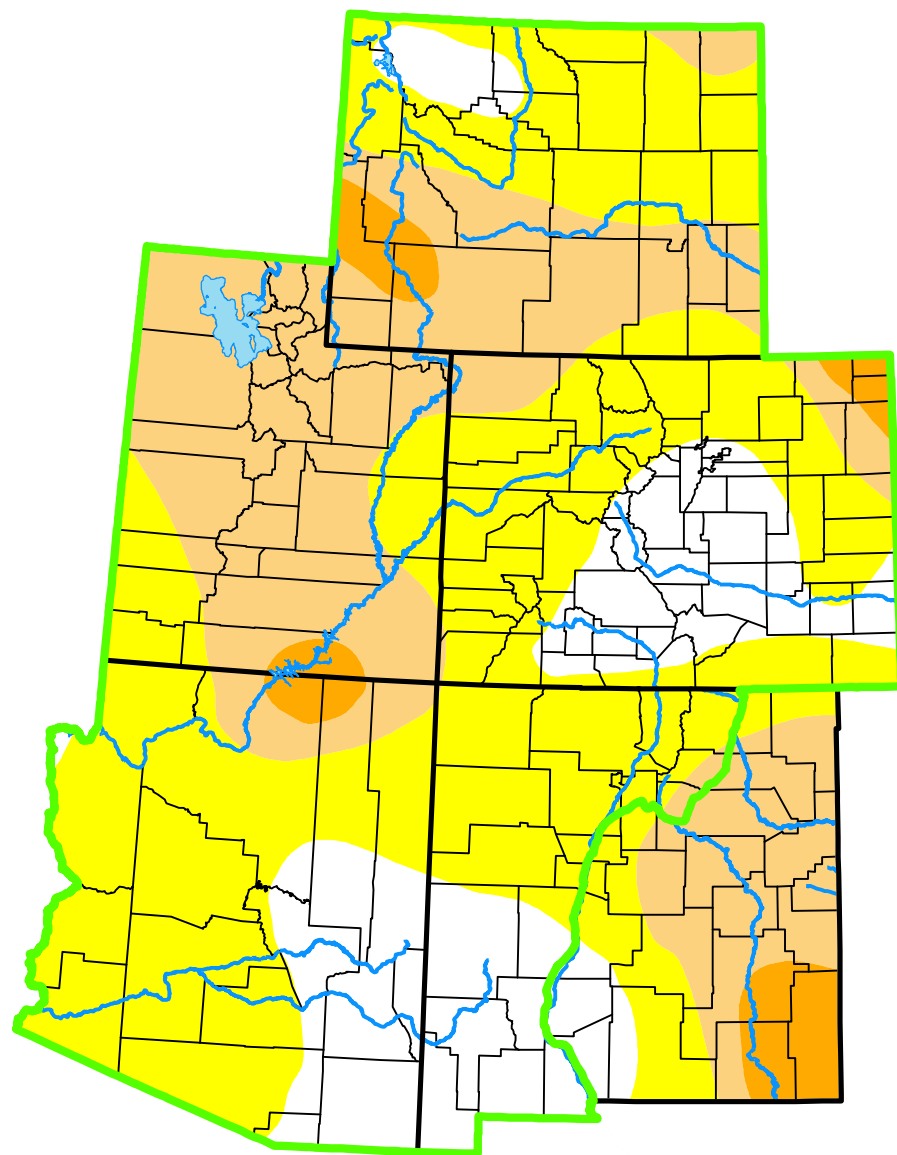


U.S. Drought Monitor

Intermountain West DEWS and Surrounding Areas



September 5, 2000

(Released Thursday, Sep. 7, 2000)

Valid 8 a.m. EDT

Drought Conditions (Percent Area)

	None	D0-D4	D1-D4	D2-D4	D3-D4	D4
Current	20.00	80.00	29.58	2.75	0.01	0.00
Last Week <i>08-29-2000</i>	19.95	80.05	39.28	4.48	0.01	0.00
3 Months Ago <i>06-06-2000</i>	52.21	47.79	20.95	7.42	0.00	0.00
Start of Calendar Year <i>01-04-2000</i>	78.99	21.01	0.00	0.00	0.00	0.00
Start of Water Year <i>01-01-1900</i>	-	-	-	-	-	-
One Year Ago <i>01-01-1900</i>	-	-	-	-	-	-

(Statistics for area highlighted in green)

Intensity:

None	D2 Severe Drought
D0 Abnormally Dry	D3 Extreme Drought
D1 Moderate Drought	D4 Exceptional Drought

The Drought Monitor focuses on broad-scale conditions. Local conditions may vary. For more information on the Drought Monitor, go to <https://droughtmonitor.unl.edu/About.aspx>

Author:

Staff None

National Drought Mitigation Center



droughtmonitor.unl.edu