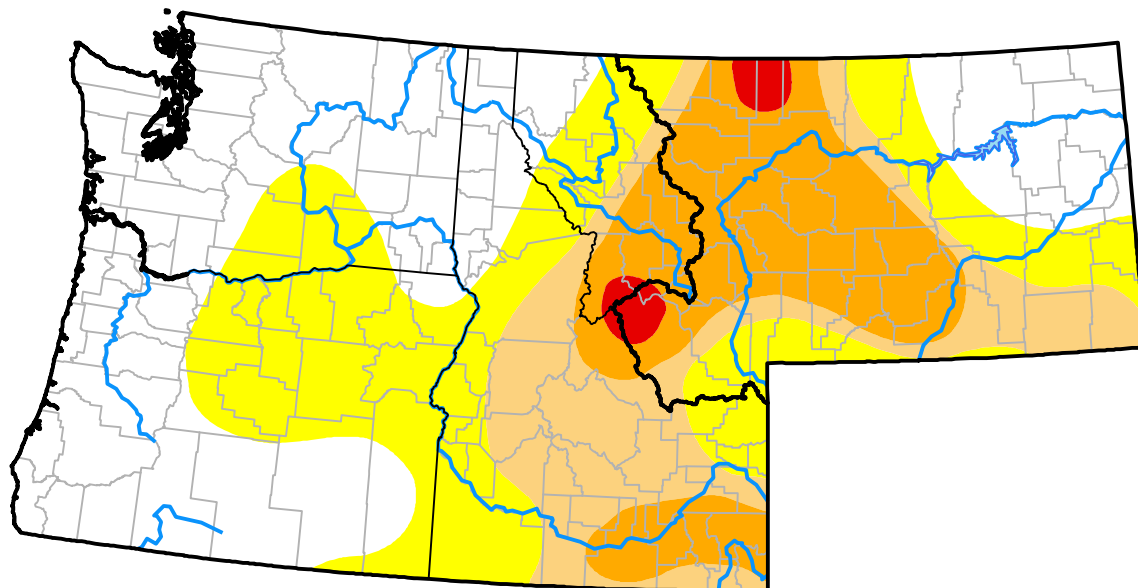


Northwest RDEWS and Surrounding Areas

Drought Conditions (Percent Area)

	None	D0-D4	D1-D4	D2-D4	D3-D4	D4
Current	40.17	59.83	32.47	17.65	1.27	0.00
Last Week <i>08-31-2000</i>	32.74	67.26	39.42	18.32	1.27	0.00
3 Months Ago <i>06-08-2000</i>	76.28	23.72	7.50	0.00	0.00	0.00
Start of Calendar Year <i>01-06-2000</i>	99.59	0.41	0.00	0.00	0.00	0.00
Start of Water Year	-	-	-	-	-	-
One Year Ago	-	-	-	-	-	-



Intensity:

None	D2 Severe Drought
D0 Abnormally Dry	D3 Extreme Drought
D1 Moderate Drought	D4 Exceptional Drought

The Drought Monitor focuses on broad-scale conditions. Local conditions may vary. For more information on the Drought Monitor, go to <https://droughtmonitor.unl.edu/About.aspx>

Author:

Staff None
National Drought Mitigation Center

