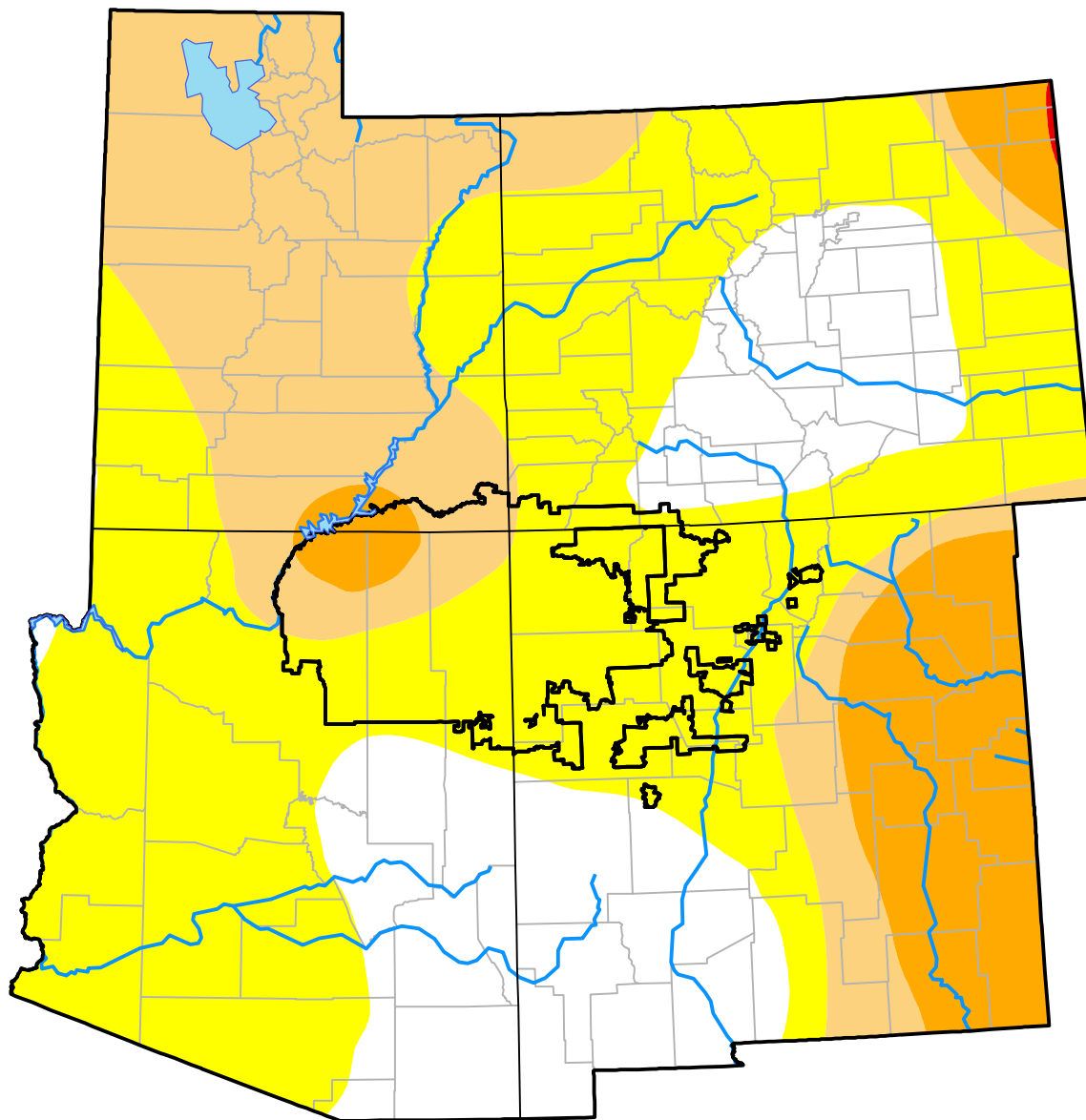


U.S. Drought Monitor

Four Corners RDEWS

September 19, 2000
(Released Thursday, Sep. 21, 2000)
 Valid 8 a.m. EDT



Drought Conditions (Percent Area)

	None	D0-D4	D1-D4	D2-D4	D3-D4	D4
Current	0.13	99.87	28.76	9.00	0.00	0.00
Last Week <i>09-14-2000</i>	0.13	99.87	28.76	9.00	0.00	0.00
3 Months Ago <i>06-22-2000</i>	0.00	100.00	46.93	0.96	0.00	0.00
Start of Calendar Year <i>01-06-2000</i>	96.09	3.91	0.00	0.00	0.00	0.00
Start of Water Year	-	-	-	-	-	-
One Year Ago	-	-	-	-	-	-

Intensity:

None	D2 Severe Drought
D0 Abnormally Dry	D3 Extreme Drought
D1 Moderate Drought	D4 Exceptional Drought

The Drought Monitor focuses on broad-scale conditions. Local conditions may vary. For more information on the Drought Monitor, go to <https://droughtmonitor.unl.edu/About.aspx>

Author:

Staff None
 National Drought Mitigation Center



droughtmonitor.unl.edu