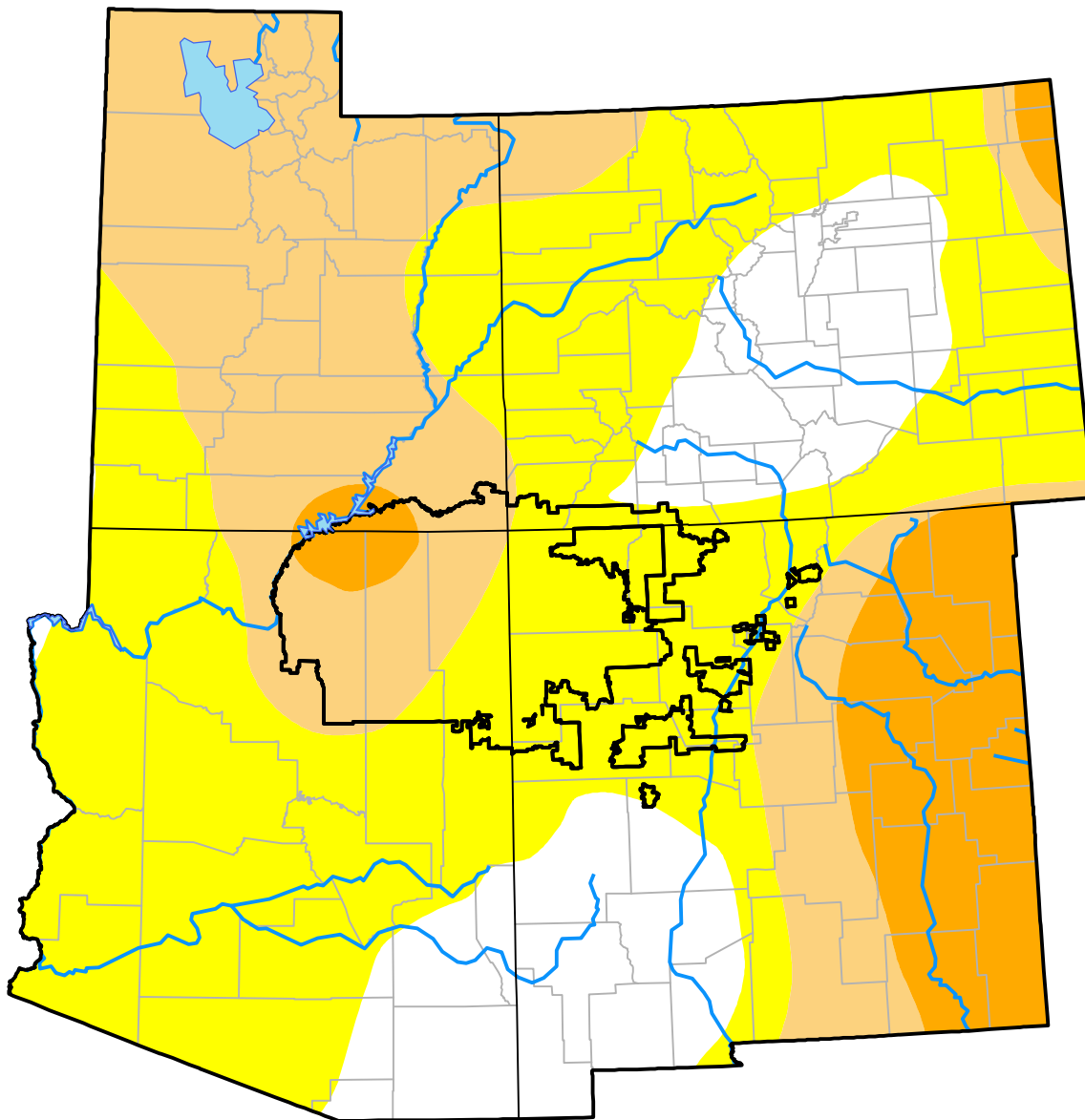


# U.S. Drought Monitor

## Four Corners RDEWS

**September 26, 2000**  
 (Released Thursday, Sep. 28, 2000)  
 Valid 8 a.m. EDT



*Drought Conditions (Percent Area)*

	None	D0	D1	D2	D3	D4
<b>Current</b>	0.05	55.27	35.68	9.00	0.00	0.00
<b>Last Week</b> <i>09-21-2000</i>	0.13	71.10	19.76	9.00	0.00	0.00
<b>3 Months Ago</b> <i>06-29-2000</i>	0.00	45.44	52.18	2.38	0.00	0.00
<b>Start of Calendar Year</b> <i>01-06-2000</i>	96.09	3.91	0.00	0.00	0.00	0.00
<b>Start of Water Year</b> <i>09-28-2000</i>	0.05	55.27	35.68	9.00	0.00	0.00
<b>One Year Ago</b>	-	-	-	-	-	-

Intensity:

- None
- D0 Abnormally Dry
- D1 Moderate Drought
- D2 Severe Drought
- D3 Extreme Drought
- D4 Exceptional Drought

*The Drought Monitor focuses on broad-scale conditions. Local conditions may vary. For more information on the Drought Monitor, go to <https://droughtmonitor.unl.edu/About.aspx>*

Author:

Staff None  
 National Drought Mitigation Center

