

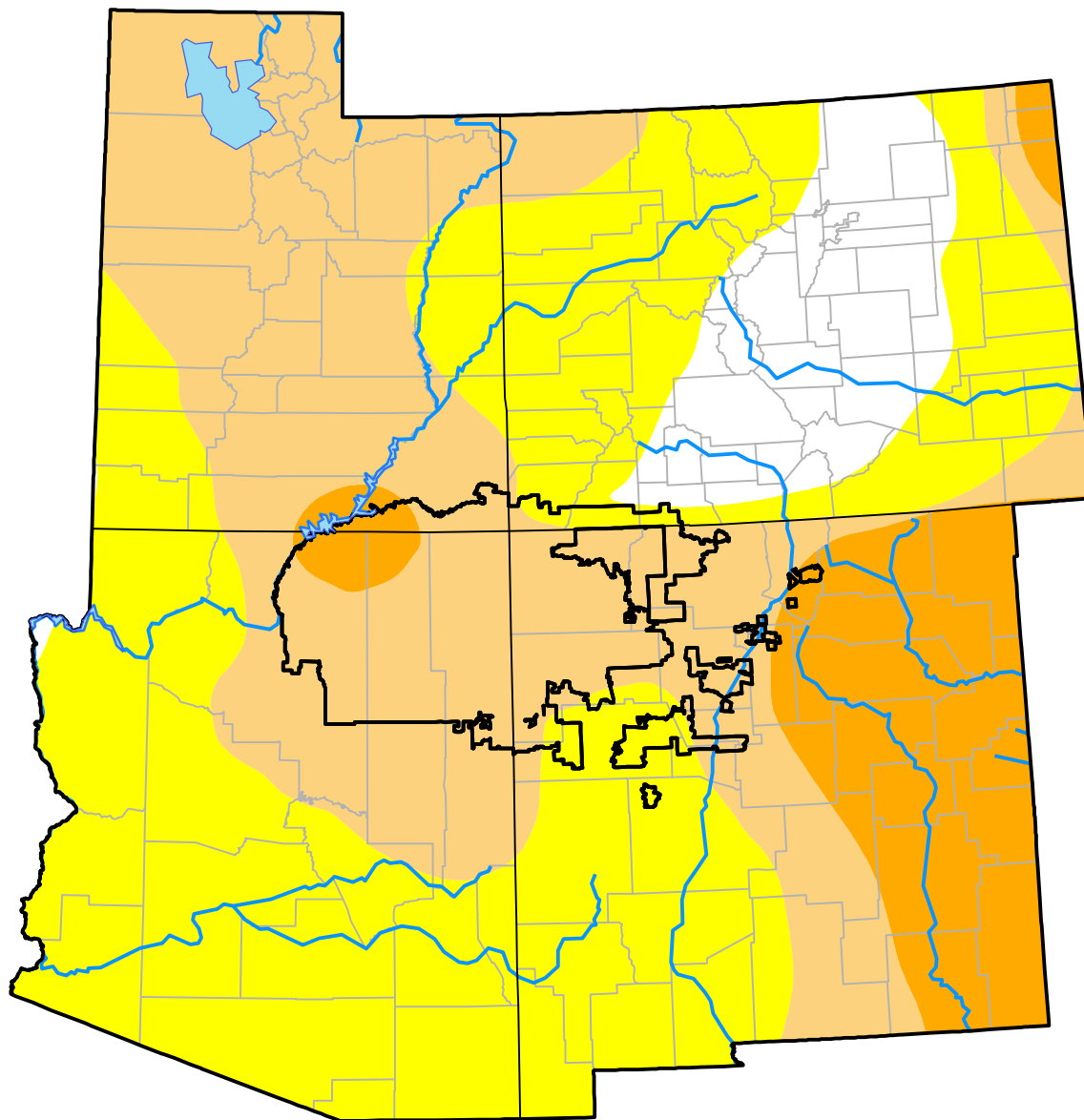
Corners RDEWS and Surrounding Areas

(Released Thursday, Oct. 5, 2000)

Valid 8 a.m. EDT

Drought Conditions (Percent Area)

	None	D0	D1	D2	D3	D4
Current	8.56	43.94	35.56	11.94	0.00	0.00
Last Week <i>09-28-2000</i>	16.80	47.28	25.93	9.98	0.00	0.00
3 Months Ago <i>07-06-2000</i>	15.16	75.14	8.85	0.85	0.01	0.00
Start of Calendar Year <i>01-06-2000</i>	69.87	29.64	0.46	0.03	0.00	0.00
Start of Water Year <i>09-28-2000</i>	16.80	47.28	25.93	9.98	0.00	0.00
One Year Ago	-	-	-	-	-	-



Intensity:

- None
- D0 Abnormally Dry
- D1 Moderate Drought
- D2 Severe Drought
- D3 Extreme Drought
- D4 Exceptional Drought

The Drought Monitor focuses on broad-scale conditions. Local conditions may vary. For more information on the Drought Monitor, go to <https://droughtmonitor.unl.edu/About.aspx>

Author:

Staff None
National Drought Mitigation Center

