

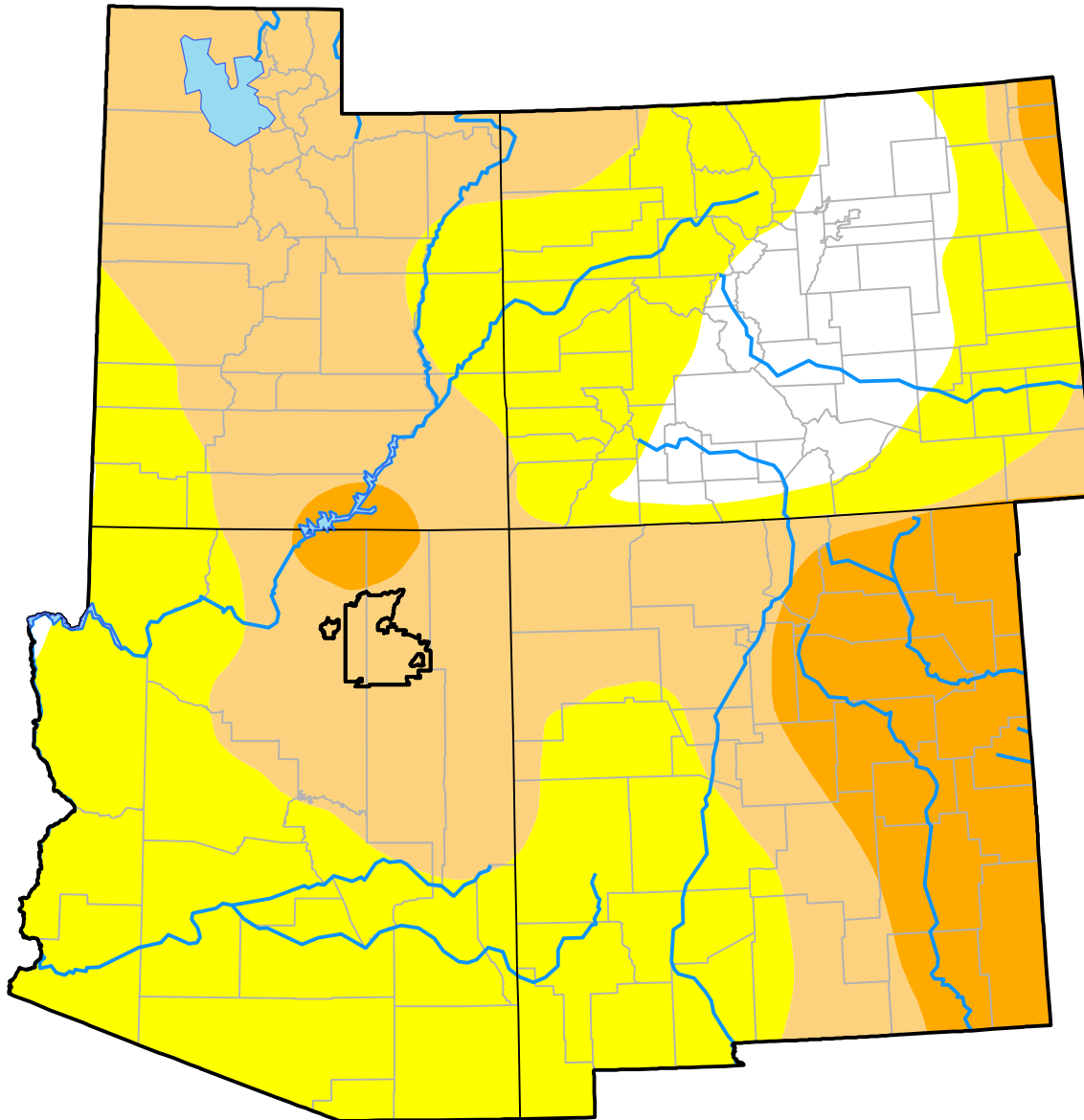
# Opportunity RDEWS and Surrounding Areas

(Released Thursday, Oct. 5, 2000)

Valid 8 a.m. EDT

Drought Conditions (Percent Area)

	None	D0-D4	D1-D4	D2-D4	D3-D4	D4
<b>Current</b>	8.56	91.44	47.50	11.94	0.00	0.00
<b>Last Week</b> <i>09-28-2000</i>	16.80	83.20	35.92	9.98	0.00	0.00
<b>3 Months Ago</b> <i>07-06-2000</i>	15.16	84.84	9.70	0.85	0.01	0.00
<b>Start of Calendar Year</b> <i>01-06-2000</i>	69.87	30.13	0.49	0.03	0.00	0.00
<b>Start of Water Year</b> <i>09-28-2000</i>	16.80	83.20	35.92	9.98	0.00	0.00
<b>One Year Ago</b>	-	-	-	-	-	-



**Intensity:**

- None
- D0 Abnormally Dry
- D1 Moderate Drought
- D2 Severe Drought
- D3 Extreme Drought
- D4 Exceptional Drought

The Drought Monitor focuses on broad-scale conditions. Local conditions may vary. For more information on the Drought Monitor, go to <https://droughtmonitor.unl.edu/About.aspx>

**Author:**

Staff None  
National Drought Mitigation Center

