

# U.S. Drought Monitor

## Intermountain West DEWS and Surrounding Areas

**October 3, 2000**

(Released Thursday, Oct. 5, 2000)

Valid 8 a.m. EDT

*Drought Conditions (Percent Area)*

	None	D0	D1	D2	D3	D4
<b>Current</b>	8.01	51.84	37.06	3.09	0.00	0.00
<b>Last Week</b> <i>09-26-2000</i>	14.68	55.24	28.06	2.02	0.00	0.00
<b>3 Months Ago</b> <i>07-04-2000</i>	15.57	70.98	12.66	0.78	0.01	0.00
<b>Start of Calendar Year</b> <i>01-04-2000</i>	78.99	21.01	0.00	0.00	0.00	0.00
<b>Start of Water Year</b> <i>09-26-2000</i>	14.68	55.24	28.06	2.02	0.00	0.00
<b>One Year Ago</b> <i>01-01-1900</i>	-	-	-	-	-	-

(Statistics for area highlighted in green)

### Intensity:

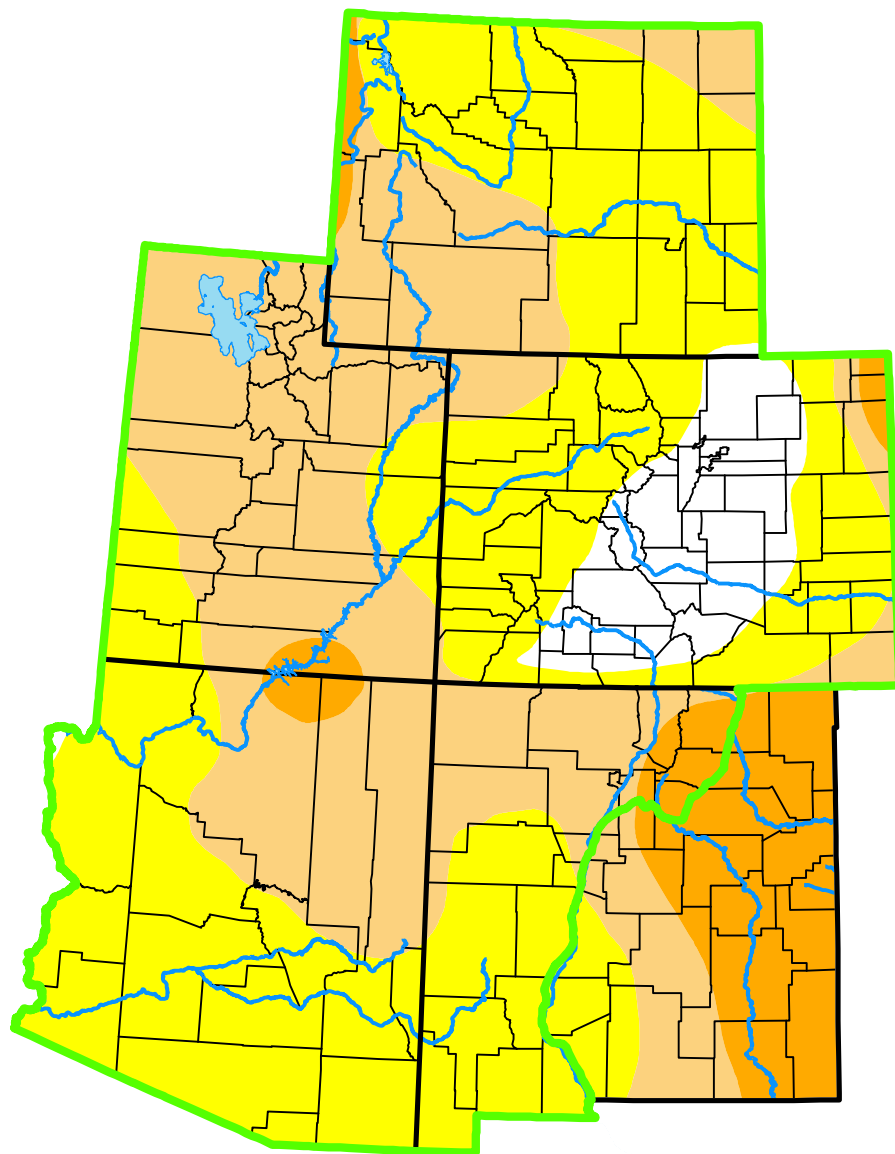
 None	 D2 Severe Drought
 D0 Abnormally Dry	 D3 Extreme Drought
 D1 Moderate Drought	 D4 Exceptional Drought

The Drought Monitor focuses on broad-scale conditions. Local conditions may vary. For more information on the Drought Monitor, go to <https://droughtmonitor.unl.edu/About.aspx>

### Author:

Staff None

National Drought Mitigation Center



[droughtmonitor.unl.edu](https://droughtmonitor.unl.edu)