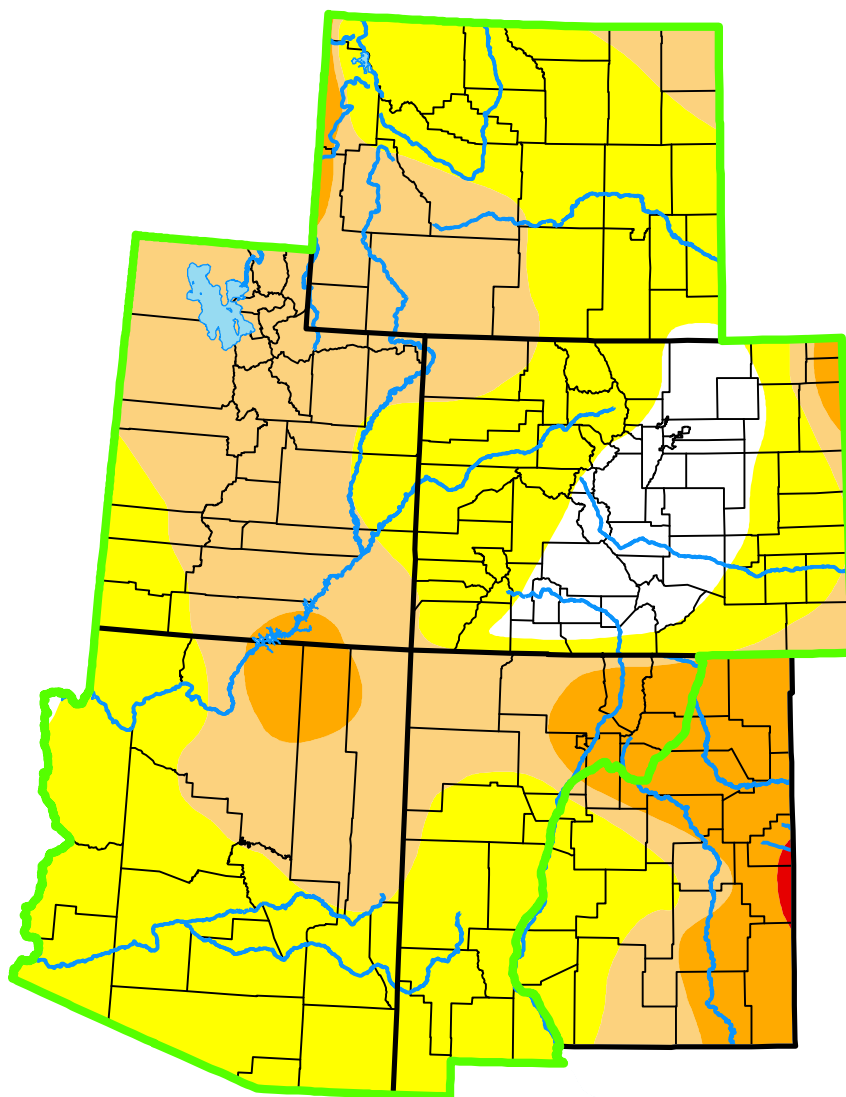


U.S. Drought Monitor

Intermountain West DEWS and Surrounding Areas

October 10, 2000
(Released Thursday, Oct. 12, 2000)
Valid 8 a.m. EDT



Intensity:



The Drought Monitor focuses on broad-scale conditions. Local conditions may vary. For more information on the Drought Monitor, go to <https://droughtmonitor.unl.edu/About.aspx>

Author:

Staff None
National Drought Mitigation Center



droughtmonitor.unl.edu